

BOSS MODELS

CAPE TOWN



Básicos
contemporáneos
Prendas
funcionales, con
líneas puras y tonos
neutros. Conrad
Bromfield lleva
cinturón de cuero,
jersey de manga
corta, pantalón y
zapatos. Todo de
Louis Vuitton.

CONRAD B

Height: 188cm Waist: 76cm Suit: 40 L Shoe: 9.5 UK Hair: Black Eyes: Brown

BOSS MODELS

CAPE TOWN



CONRAD B

Height: 188cm Waist: 76cm Suit: 40 L Shoe: 9.5 UK Hair: Black Eyes: Brown

BOSS MODELS

CAPE TOWN



CONRAD B

Height: 188cm Waist: 76cm Suit: 40 L Shoe: 9.5 UK Hair: Black Eyes: Brown

BOSS MODELS

CAPE TOWN



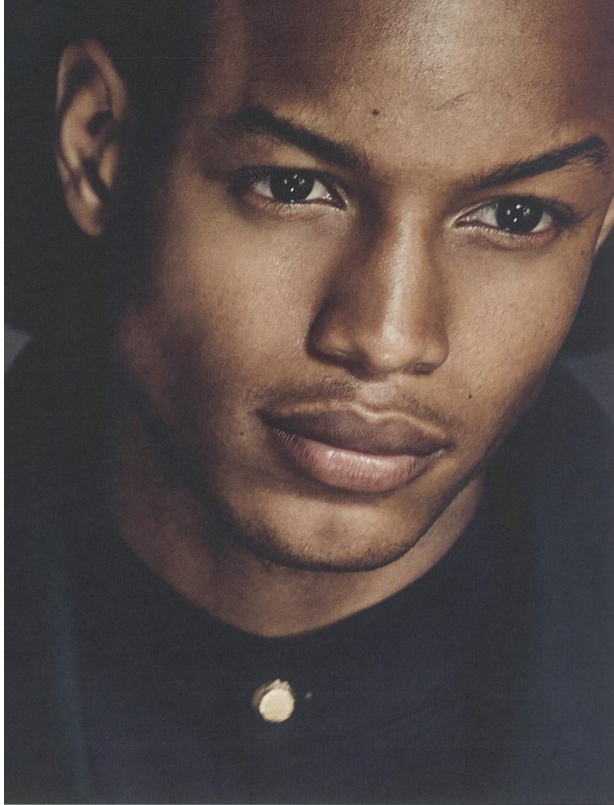
A|X
ARMANI EXCHANGE

CONRAD B

Height: 188cm Waist: 76cm Suit: 40 L Shoe: 9.5 UK Hair: Black Eyes: Brown

BOSS MODELS

CAPE TOWN



CONRAD B

Height: 188cm Waist: 76cm Suit: 40 L Shoe: 9.5 UK Hair: Black Eyes: Brown

BOSS MODELS

CAPE TOWN



FROM LEFT:
CONRAD WEARS
SUIT BOTTEGA VENETA
SHIRT JEFFREY MADER
SHOES GIUSEPPE
ZANOTTI DESIGN

LOGAN M. WEARS
SUIT PHILIPP PLEIN
TURTLENECK VERSACE
WATCH OMEGA



CONRAD B

Height: 188cm Waist: 76cm Suit: 40 L Shoe: 9.5 UK Hair: Black Eyes: Brown

BOSS MODELS

CAPE TOWN



HELMET: STYLIST OWN
HIRT: DOLCE & GABBANA
UNDERWEAR: VERSACE
SHORTS: ALEXANDER WANG



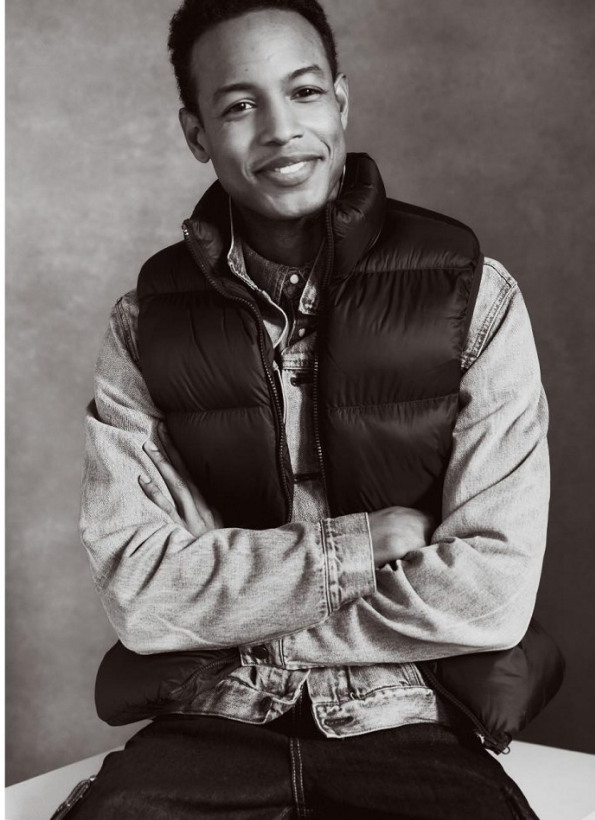
MMSCENE09

CONRAD B

Height: 188cm Waist: 76cm Suit: 40 L Shoe: 9.5 UK Hair: Black Eyes: Brown

BOSS MODELS

CAPE TOWN



CONRAD B

Height: 188cm Waist: 76cm Suit: 40 L Shoe: 9.5 UK Hair: Black Eyes: Brown

BOSS MODELS

CAPE TOWN



CONRAD B

Height: 188cm Waist: 76cm Suit: 40 L Shoe: 9.5 UK Hair: Black Eyes: Brown

BOSS MODELS

CAPE TOWN



CONRAD B

Height: 188cm Waist: 76cm Suit: 40 L Shoe: 9.5 UK Hair: Black Eyes: Brown