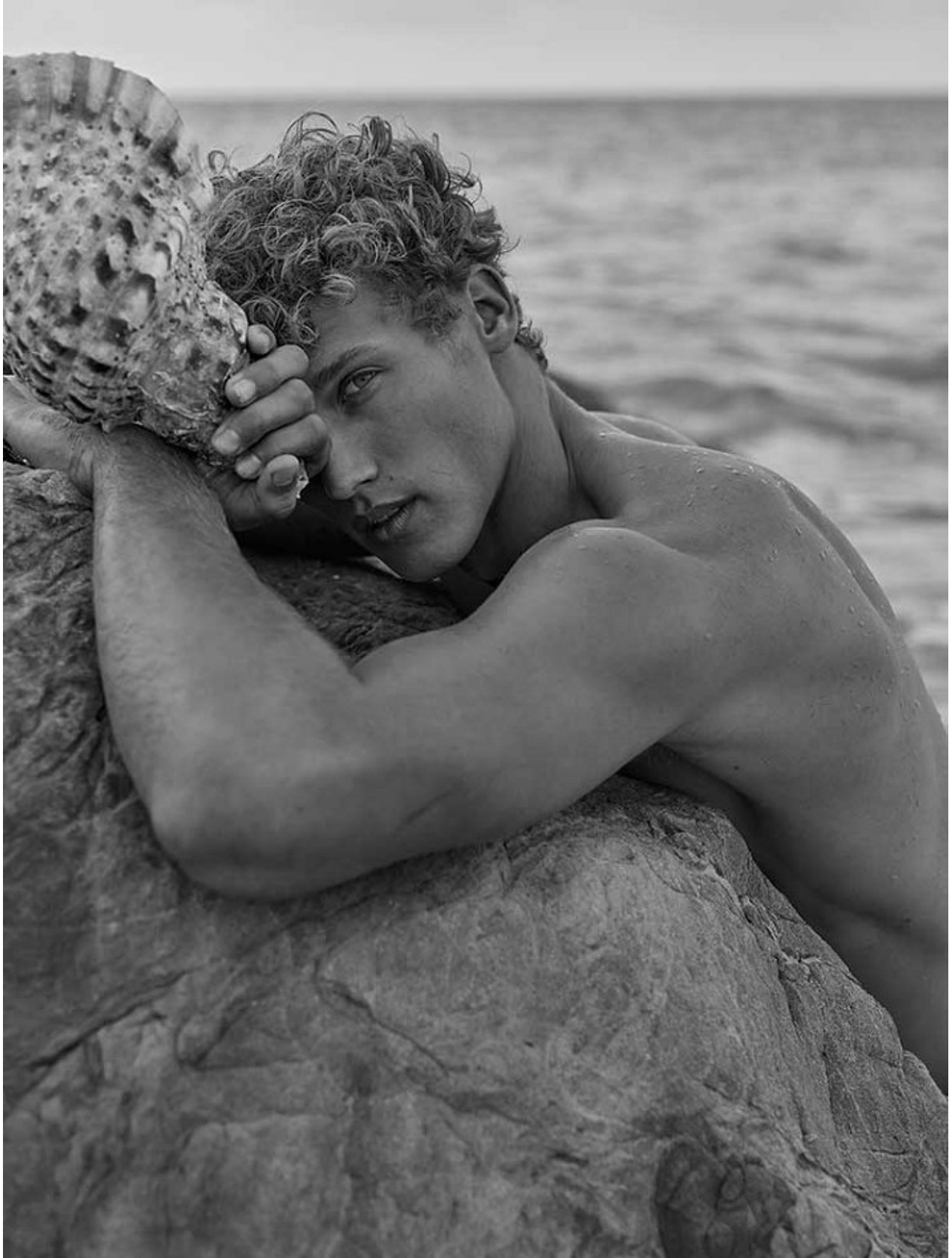


BOSS MODELS

CAPE TOWN



BRAM VALBRACHT

Height: 190cm Chest: 96cm Waist: 79cm Suit: 38 R Shoe: 10.5 UK Hair: Blonde Eyes: Blue/Grey

BOSS MODELS

CAPE TOWN



BRAM VALBRACHT

Height: 190cm Chest: 96cm Waist: 79cm Suit: 38 R Shoe: 10.5 UK Hair: Blonde Eyes: Blue/Grey

BOSS MODELS

CAPE TOWN



BRAM VALBRACHT

Height: 190cm Chest: 96cm Waist: 79cm Suit: 38 R Shoe: 10.5 UK Hair: Blonde Eyes: Blue/Grey

BOSS MODELS

CAPE TOWN



BRAM VALBRACHT

Height: 190cm Chest: 96cm Waist: 79cm Suit: 38 R Shoe: 10.5 UK Hair: Blonde Eyes: Blue/Grey

BOSS MODELS

CAPE TOWN



BRAM VALBRACHT

Height: 190cm Chest: 96cm Waist: 79cm Suit: 38 R Shoe: 10.5 UK Hair: Blonde Eyes: Blue/Grey

BOSS MODELS

CAPE TOWN

VALENTINO jacket, shirt,
pants, and hat.



BRAM VALBRACHT

Height: 190cm Chest: 96cm Waist: 79cm Suit: 38 R Shoe: 10.5 UK Hair: Blonde Eyes: Blue/Grey

BOSS MODELS

CAPE TOWN



SALVATORE FERRAGAMO

Guillaume Melland combina los estampados y los luminosos tonos azules de la Riviera francesa para crear un estilo relajado y fresco. Jersey estampado, pantalón de cuadros y mocasines de piel, de Salvatore Ferragamo.

BRAM VALBRACHT

Height: 190cm Chest: 96cm Waist: 79cm Suit: 38 R Shoe: 10.5 UK Hair: Blonde Eyes: Blue/Grey

BOSS MODELS

CAPE TOWN



BRAM VALBRACHT

Height: 190cm Chest: 96cm Waist: 79cm Suit: 38 R Shoe: 10.5 UK Hair: Blonde Eyes: Blue/Grey

BOSS MODELS

CAPE TOWN



BRAM VALBRACHT

Height: 190cm Chest: 96cm Waist: 79cm Suit: 38 R Shoe: 10.5 UK Hair: Blonde Eyes: Blue/Grey

BOSS MODELS

CAPE TOWN



BRAM VALBRACHT

Height: 190cm Chest: 96cm Waist: 79cm Suit: 38 R Shoe: 10.5 UK Hair: Blonde Eyes: Blue/Grey

BOSS MODELS

CAPE TOWN



BRAM VALBRACHT

Height: 190cm Chest: 96cm Waist: 79cm Suit: 38 R Shoe: 10.5 UK Hair: Blonde Eyes: Blue/Grey

BOSS MODELS

CAPE TOWN



BRAM VALBRACHT

Height: 190cm Chest: 96cm Waist: 79cm Suit: 38 R Shoe: 10.5 UK Hair: Blonde Eyes: Blue/Grey

BOSS MODELS

CAPE TOWN



BRAM VALBRACHT

Height: 190cm Chest: 96cm Waist: 79cm Suit: 38 R Shoe: 10.5 UK Hair: Blonde Eyes: Blue/Grey

BOSS MODELS

CAPE TOWN



BRAM VALBRACHT

Height: 190cm Chest: 96cm Waist: 79cm Suit: 38 R Shoe: 10.5 UK Hair: Blonde Eyes: Blue/Grey

BOSS MODELS

CAPE TOWN



BRAM VALBRACHT

Height: 190cm Chest: 96cm Waist: 79cm Suit: 38 R Shoe: 10.5 UK Hair: Blonde Eyes: Blue/Grey

BOSS MODELS

CAPE TOWN



BRAM VALBRACHT

Height: 190cm Chest: 96cm Waist: 79cm Suit: 38 R Shoe: 10.5 UK Hair: Blonde Eyes: Blue/Grey

BOSS MODELS

CAPE TOWN

Cappotto pied-de-poule, **GANT**.
Trench di pvc, **LES HOMMES**.
Cappello, **PRADA**.
Pagina accanto:
giaccone antivento, **PARAJUMPERS**.
Giacca con revers a lancia e pantaloni, **OFF-WHITE**.
Dolcevita, **ROBERTO CAVALLI**.



OTTOBRE 2019

WANTY PAIR

69

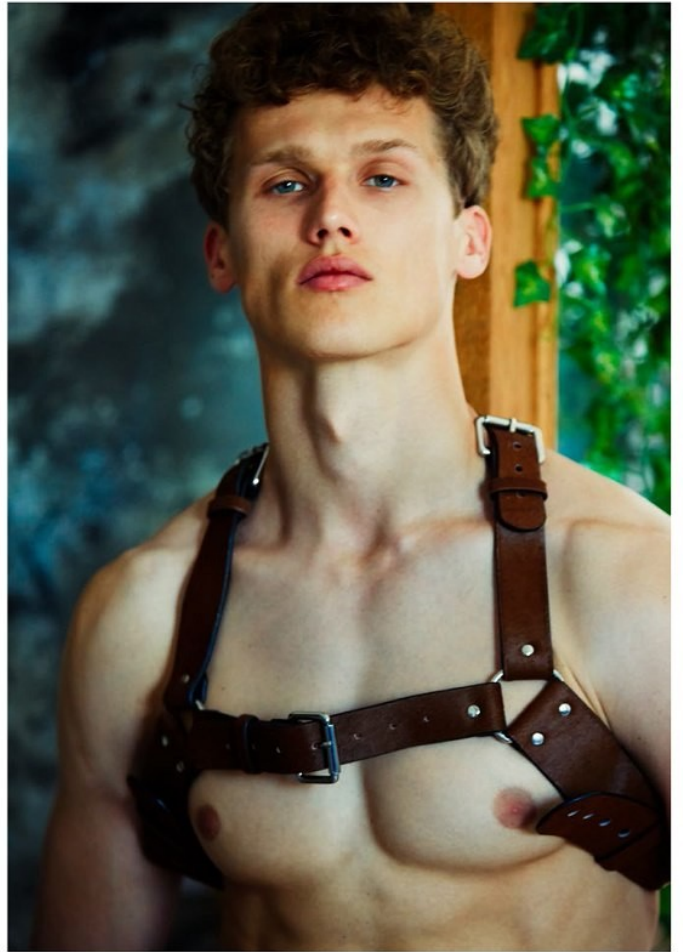
BRAM VALBRACHT

Height: 190cm Chest: 96cm Waist: 79cm Suit: 38 R Shoe: 10.5 UK Hair: Blonde Eyes: Blue/Grey

BOSS MODELS

CAPE TOWN

Total look: VERSACE
Gafas de sol: MONSE



En esta página y en la anterior:
Aros: PRIVATE POLICY
Pantalones: BALLY

www.risbelmagazine.es //299

BRAM VALBRACHT

Height: 190cm Chest: 96cm Waist: 79cm Suit: 38 R Shoe: 10.5 UK Hair: Blonde Eyes: Blue/Grey

BOSS MODELS

CAPE TOWN



BRAM VALBRACHT

Height: 190cm Chest: 96cm Waist: 79cm Suit: 38 R Shoe: 10.5 UK Hair: Blonde Eyes: Blue/Grey

BOSS MODELS

CAPE TOWN



Piumino e trench
di pvc, **MONCLER**.
Completo gessato,
MSGM. Sandali,
BIRKENSTOCK.
Pagina accanto: giacca
a vento imbottita
con tasche applicate,
CIESSE PIUMINI.
Blazer stampato,
DRIES VAN NOTEN.
Pantaloni,
PT TORINO.
Orecchino e collana,
ALEXANDER
MCOUEN. Catena,
RADÁ. Sneakers,
VIC MATIÉ.

64

BRAM VALBRACHT

Height: 190cm Chest: 96cm Waist: 79cm Suit: 38 R Shoe: 10.5 UK Hair: Blonde Eyes: Blue/Grey

BOSS MODELS

CAPE TOWN



SHOP AT DSQUARED2.COM

DSQUARED2

BRAM VALBRACHT

Height: 190cm Chest: 96cm Waist: 79cm Suit: 38 R Shoe: 10.5 UK Hair: Blonde Eyes: Blue/Grey

BOSS MODELS

CAPE TOWN



BRAM VALBRACHT

Height: 190cm Chest: 96cm Waist: 79cm Suit: 38 R Shoe: 10.5 UK Hair: Blonde Eyes: Blue/Grey

BOSS MODELS

CAPE TOWN



BRAM VALBRACHT

Height: 190cm Chest: 96cm Waist: 79cm Suit: 38 R Shoe: 10.5 UK Hair: Blonde Eyes: Blue/Grey

BOSS MODELS

CAPE TOWN



BRAM VALBRACHT

Height: 190cm Chest: 96cm Waist: 79cm Suit: 38 R Shoe: 10.5 UK Hair: Blonde Eyes: Blue/Grey

BOSS MODELS

CAPE TOWN



BRAM VALBRACHT

Height: 190cm Chest: 96cm Waist: 79cm Suit: 38 R Shoe: 10.5 UK Hair: Blonde Eyes: Blue/Grey

BOSS MODELS

CAPE TOWN



Abrigo: NARCISS
Pantalones y camisa: LINDER
Botas: CALVIN LUO



Kimono: KRAMMER & STOUDT
Pantalones: NUBOUTE

BRAM VALBRACHT

Height: 190cm Chest: 96cm Waist: 79cm Suit: 38 R Shoe: 10.5 UK Hair: Blonde Eyes: Blue/Grey

BOSS MODELS

CAPE TOWN



BRAM VALBRACHT

Height: 190cm Chest: 96cm Waist: 79cm Suit: 38 R Shoe: 10.5 UK Hair: Blonde Eyes: Blue/Grey

BOSS MODELS

CAPE TOWN



BRAM VALBRACHT

Height: 190cm Chest: 96cm Waist: 79cm Suit: 38 R Shoe: 10.5 UK Hair: Blonde Eyes: Blue/Grey

BOSS MODELS

CAPE TOWN



BRAM VALBRACHT

Height: 190cm Chest: 96cm Waist: 79cm Suit: 38 R Shoe: 10.5 UK Hair: Blonde Eyes: Blue/Grey

BOSS MODELS

CAPE TOWN



BRAM VALBRACHT

Height: 190cm Chest: 96cm Waist: 79cm Suit: 38 R Shoe: 10.5 UK Hair: Blonde Eyes: Blue/Grey

BOSS MODELS

CAPE TOWN



BRAM VALBRACHT

Height: 190cm Chest: 96cm Waist: 79cm Suit: 38 R Shoe: 10.5 UK Hair: Blonde Eyes: Blue/Grey

BOSS MODELS

CAPE TOWN

L'OFFICIEL

LITHUANIA

DE LA COUTURE ET DE LA MODE DE PARIS



BRAM VALBRACHT

Height: 190cm Chest: 96cm Waist: 79cm Suit: 38 R Shoe: 10.5 UK Hair: Blonde Eyes: Blue/Grey

BOSS MODELS

CAPE TOWN



BRAM VALBRACHT

Height: 190cm Chest: 96cm Waist: 79cm Suit: 38 R Shoe: 10.5 UK Hair: Blonde Eyes: Blue/Grey

BOSS MODELS

CAPE TOWN



LOUIS VUITTON

Kim Jones actualiza prendas y formas clásicas para un viajero contemporáneo que necesita libertad de movimientos y hace suyas prendas clásicas con nuevos patrones. Bomber azul de piel, camisa de rayas con cuello mao y pantalón marino de pinzas, de Louis Vuitton.

BRAM VALBRACHT

Height: 190cm Chest: 96cm Waist: 79cm Suit: 38 R Shoe: 10.5 UK Hair: Blonde Eyes: Blue/Grey

BOSS MODELS

CAPE TOWN



BRAM VALBRACHT

Height: 190cm Chest: 96cm Waist: 79cm Suit: 38 R Shoe: 10.5 UK Hair: Blonde Eyes: Blue/Grey