

# BOSS MODELS

CAPE TOWN



STEFAN POLLMAN

Height: 189cm Chest: 104cm Waist: 82cm Shoe: 9.5 UK Hair: Blonde Eyes: Blue/Grey

# BOSS MODELS

CAPE TOWN

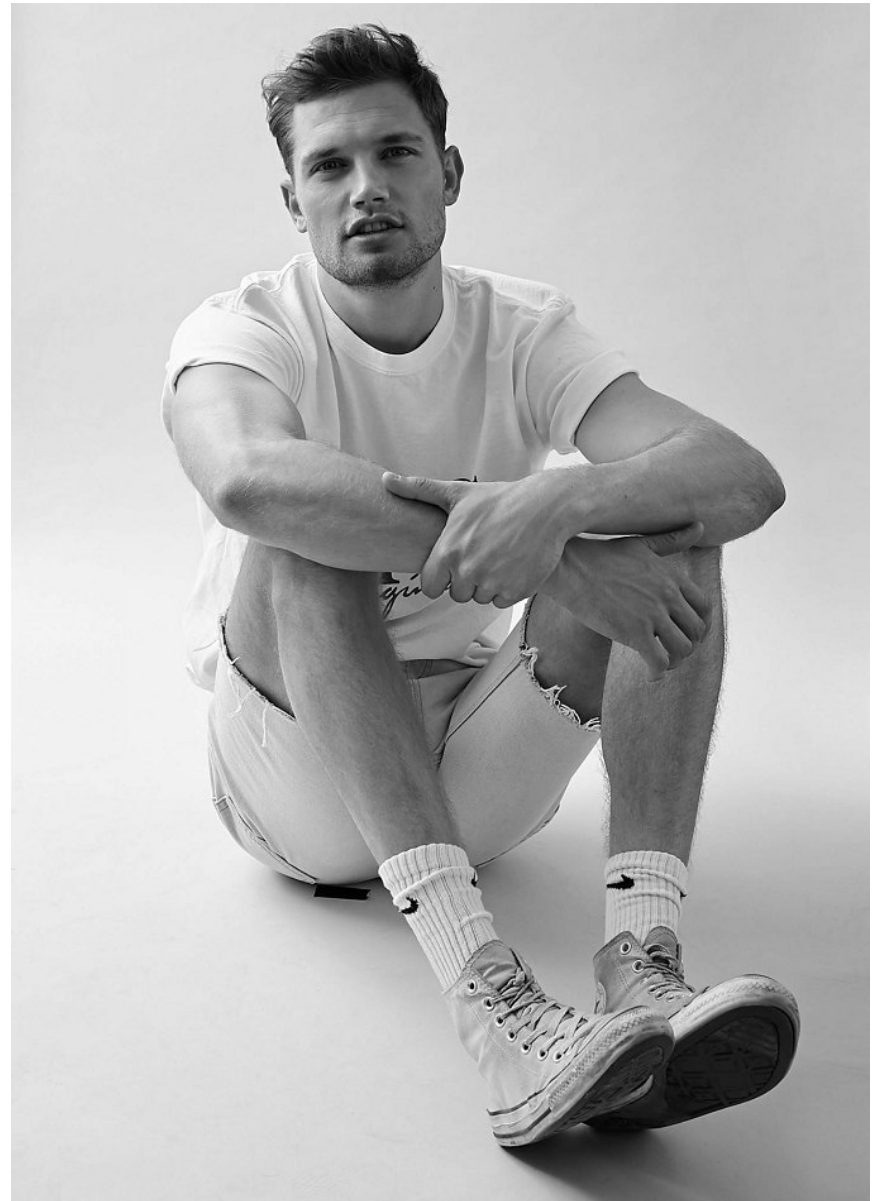


## STEFAN POLLMAN

Height: 189cm Chest: 104cm Waist: 82cm Shoe: 9.5 UK Hair: Blonde Eyes: Blue/Grey

# BOSS MODELS

CAPE TOWN



## STEFAN POLLMAN

Height: 189cm Chest: 104cm Waist: 82cm Shoe: 9.5 UK Hair: Blonde Eyes: Blue/Grey

# BOSS MODELS

CAPE TOWN



STEFAN POLLMAN

Height: 189cm Chest: 104cm Waist: 82cm Shoe: 9.5 UK Hair: Blonde Eyes: Blue/Grey

# BOSS MODELS

CAPE TOWN



STEFAN POLLMAN

Height: 189cm Chest: 104cm Waist: 82cm Shoe: 9.5 UK Hair: Blonde Eyes: Blue/Grey

# BOSS MODELS

CAPE TOWN



## STEFAN POLLMAN

Height: 189cm Chest: 104cm Waist: 82cm Shoe: 9.5 UK Hair: Blonde Eyes: Blue/Grey

# BOSS MODELS

CAPE TOWN

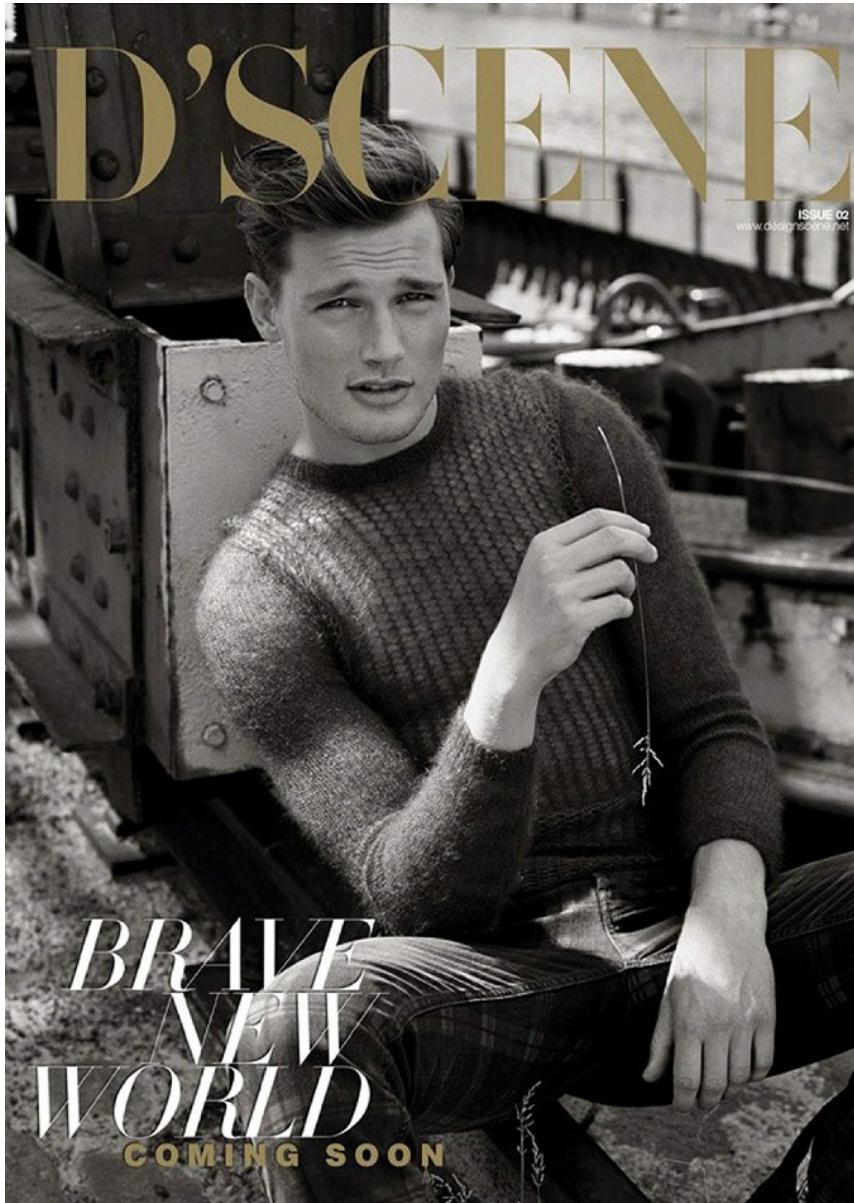


**STEFAN POLLMAN**

Height: 189cm Chest: 104cm Waist: 82cm Shoe: 9.5 UK Hair: Blonde Eyes: Blue/Grey

# BOSS MODELS

CAPE TOWN



STEFAN POLLMAN

Height: 189cm Chest: 104cm Waist: 82cm Shoe: 9.5 UK Hair: Blonde Eyes: Blue/Grey



# BOSS MODELS

CAPE TOWN



STEFAN POLLMAN

Height: 189cm Chest: 104cm Waist: 82cm Shoe: 9.5 UK Hair: Blonde Eyes: Blue/Grey

# BOSS MODELS

CAPE TOWN



## STEFAN POLLMAN

Height: 189cm Chest: 104cm Waist: 82cm Shoe: 9.5 UK Hair: Blonde Eyes: Blue/Grey

# BOSS MODELS

CAPE TOWN



STEFAN POLLMAN

Height: 189cm Chest: 104cm Waist: 82cm Shoe: 9.5 UK Hair: Blonde Eyes: Blue/Grey

# BOSS MODELS

CAPE TOWN



## STEFAN POLLMAN

Height: 189cm Chest: 104cm Waist: 82cm Shoe: 9.5 UK Hair: Blonde Eyes: Blue/Grey

# BOSS MODELS

CAPE TOWN



STEFAN POLLMAN

Height: 189cm Chest: 104cm Waist: 82cm Shoe: 9.5 UK Hair: Blonde Eyes: Blue/Grey

# BOSS MODELS

CAPE TOWN



## STEFAN POLLMAN

Height: 189cm Chest: 104cm Waist: 82cm Shoe: 9.5 UK Hair: Blonde Eyes: Blue/Grey

# BOSS MODELS

CAPE TOWN

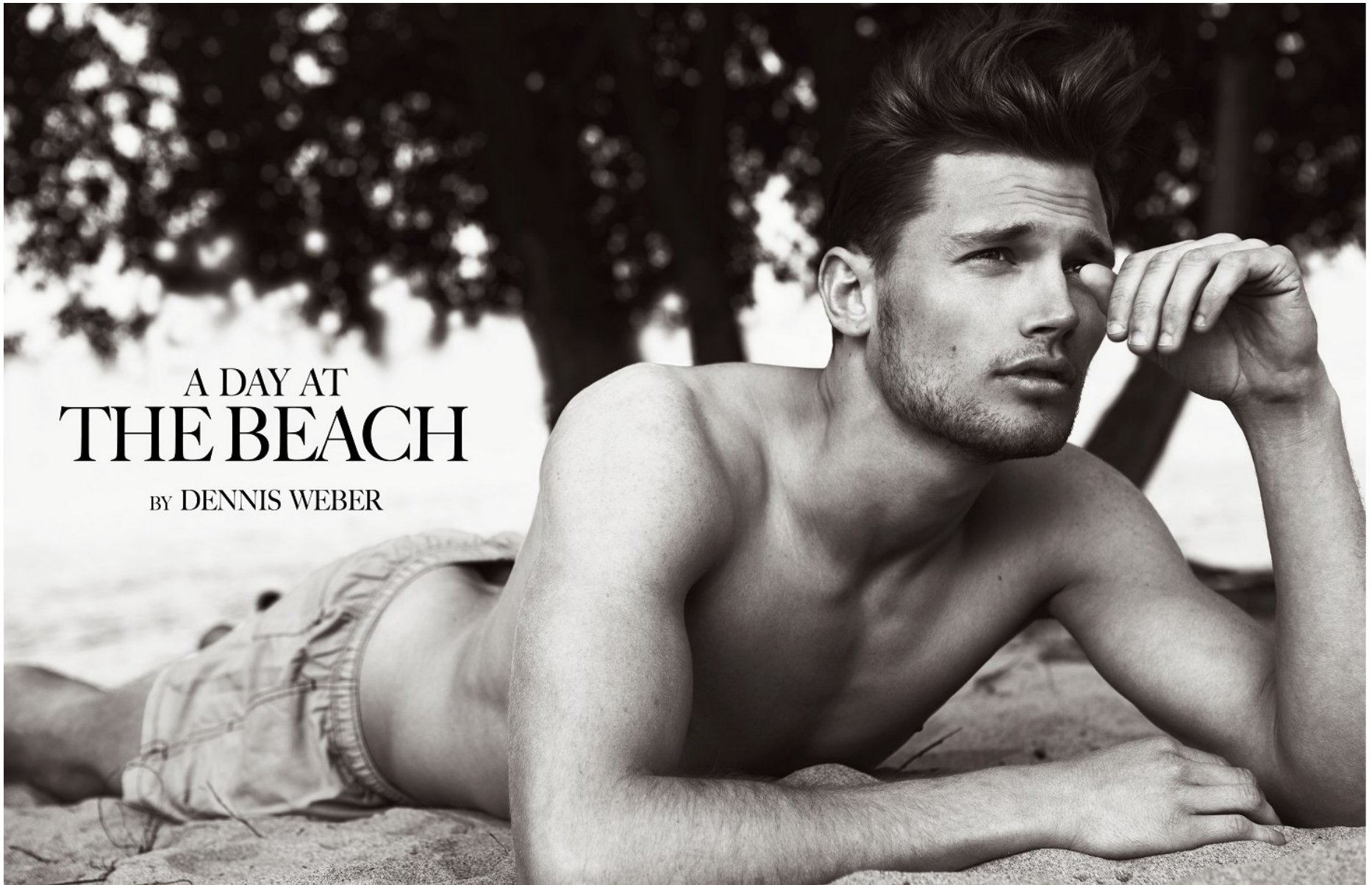


STEFAN POLLMAN

Height: 189cm Chest: 104cm Waist: 82cm Shoe: 9.5 UK Hair: Blonde Eyes: Blue/Grey

# BOSS MODELS

CAPE TOWN



## A DAY AT THE BEACH

BY DENNIS WEBER

STEFAN POLLMAN

Height: 189cm Chest: 104cm Waist: 82cm Shoe: 9.5 UK Hair: Blonde Eyes: Blue/Grey



# BOSS MODELS

CAPE TOWN

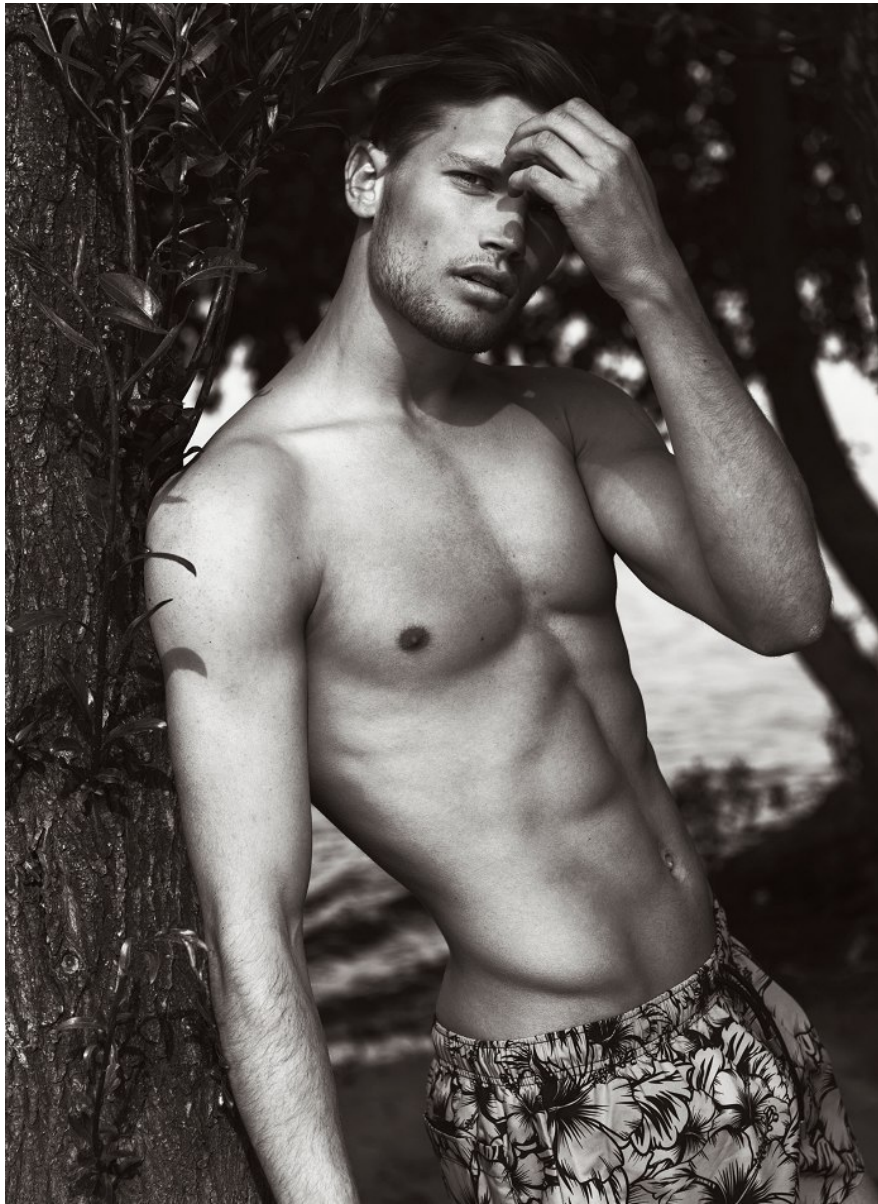


STEFAN POLLMAN

Height: 189cm Chest: 104cm Waist: 82cm Shoe: 9.5 UK Hair: Blonde Eyes: Blue/Grey

# BOSS MODELS

CAPE TOWN



STEFAN POLLMAN

Height: 189cm Chest: 104cm Waist: 82cm Shoe: 9.5 UK Hair: Blonde Eyes: Blue/Grey

# BOSS MODELS

CAPE TOWN



STEFAN POLLMAN

Height: 189cm Chest: 104cm Waist: 82cm Shoe: 9.5 UK Hair: Blonde Eyes: Blue/Grey

# BOSS MODELS

CAPE TOWN



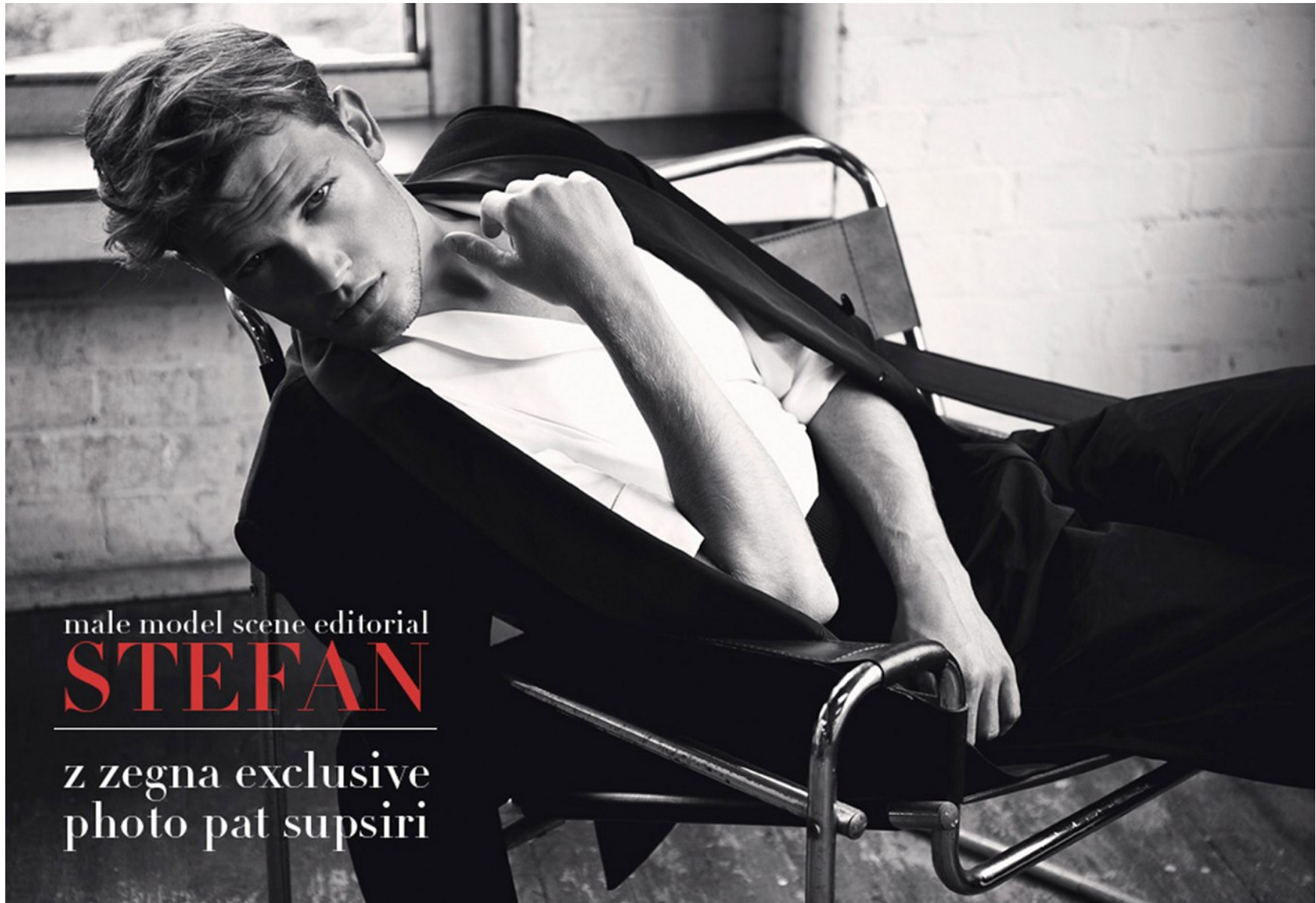
*raf simons shirt and  
trench from assin.*

## STEFAN POLLMAN

Height: 189cm Chest: 104cm Waist: 82cm Shoe: 9.5 UK Hair: Blonde Eyes: Blue/Grey

# BOSS MODELS

CAPE TOWN



male model scene editorial

**STEFAN**

z zegna exclusive  
photo pat supsiri

STEFAN POLLMAN

Height: 189cm Chest: 104cm Waist: 82cm Shoe: 9.5 UK Hair: Blonde Eyes: Blue/Grey

# BOSS MODELS

CAPE TOWN



STEFAN POLLMAN

Height: 189cm Chest: 104cm Waist: 82cm Shoe: 9.5 UK Hair: Blonde Eyes: Blue/Grey

# BOSS MODELS

CAPE TOWN



STEFAN POLLMAN

Height: 189cm Chest: 104cm Waist: 82cm Shoe: 9.5 UK Hair: Blonde Eyes: Blue/Grey

# BOSS MODELS

CAPE TOWN



STEFAN POLLMAN

Height: 189cm Chest: 104cm Waist: 82cm Shoe: 9.5 UK Hair: Blonde Eyes: Blue/Grey



# BOSS MODELS

CAPE TOWN



STEFAN POLLMAN

Height: 189cm Chest: 104cm Waist: 82cm Shoe: 9.5 UK Hair: Blonde Eyes: Blue/Grey

# BOSS MODELS

CAPE TOWN



Coat R63,000+tax Drawing Numbers: Knit R21,000+tax Drawing Numbers: Shirts R16,000+tax Drawing Numbers:  
Jeans R29,800+tax NOBLE Shoes R57,900+tax CHEANEY

## STEFAN POLLMAN

Height: 189cm Chest: 104cm Waist: 82cm Shoe: 9.5 UK Hair: Blonde Eyes: Blue/Grey

# BOSS MODELS

CAPE TOWN

GGSTYLE



**Left**  
Wool jacket, \$900, wool knit, \$180, wool pants, \$190, leather shoes, \$400, and leather belt, \$150, all by Aquila.

**Right**  
Wool knit, \$150, wool pants, \$200, and leather loafers, \$400, all by Aquila, acetate glasses, PCA, by Balenciaga at Heroldo.

Grooming Madison Voloshin using V76 at Vivien's Creative Talent Robert and Stefan at IMG Furniture A&A television, \$2480, leather armchair, \$1090, and gold stretch velvet 'Quail' egg-shaped chair, \$22,000, all from Vampst Vintage Design, vampstvintagedesign.com

**AQUILA**

Originally specialising in shoes, Aquila was inspired by Italian footwear techniques. In 2012, it then launched a full menswear line that presented a fresh take on staples such as Italian wool suiting. This season, Aquila offers plenty of suiting options to let you stand out from the style pack, from shades of burgundy to cool patterns and prints.

MAY 2017 GG.COM.AU 81

GQA0317p081 81

31/03/2017 10:06 AM

GGSTYLE



**Left**  
Leather jacket, \$550, cotton shirt, \$130, wool tie, \$70, wool suit pants, \$170, and leather shoes, \$280, all by Jack London.

**Right**  
Leather jacket, \$600, cotton polo, \$99, wool pants, \$170 and suede/crepe shoes, \$200, all by Jack London, acetate/palladium glasses, PCA, by Balenciaga at Heroldo.

**JACK LONDON**

Inspired by '50s rock 'n' roll, this Melbourne label is known for its modern Australian menswear. The latest collection delivers slim silhouettes and plenty of attitude - think orange pipe jeans, slim blazers and tailored suiting. Jack London is the ideal way to take your office attire to the next level - keep the shirt and tie, but try ditching the suit jacket for a fitted leather one.

MAY 2017 GG.COM.AU 89

GQA0317p089 89

31/03/2017 10:06 AM

## STEFAN POLLMAN

Height: 189cm Chest: 104cm Waist: 82cm Shoe: 9.5 UK Hair: Blonde Eyes: Blue/Grey

# BOSS MODELS

CAPE TOWN



STEFAN POLLMAN

Height: 189cm Chest: 104cm Waist: 82cm Shoe: 9.5 UK Hair: Blonde Eyes: Blue/Grey

# BOSS MODELS

CAPE TOWN



STEFAN POLLMAN

Height: 189cm Chest: 104cm Waist: 82cm Shoe: 9.5 UK Hair: Blonde Eyes: Blue/Grey