

# BOSS MODELS

CAPE TOWN



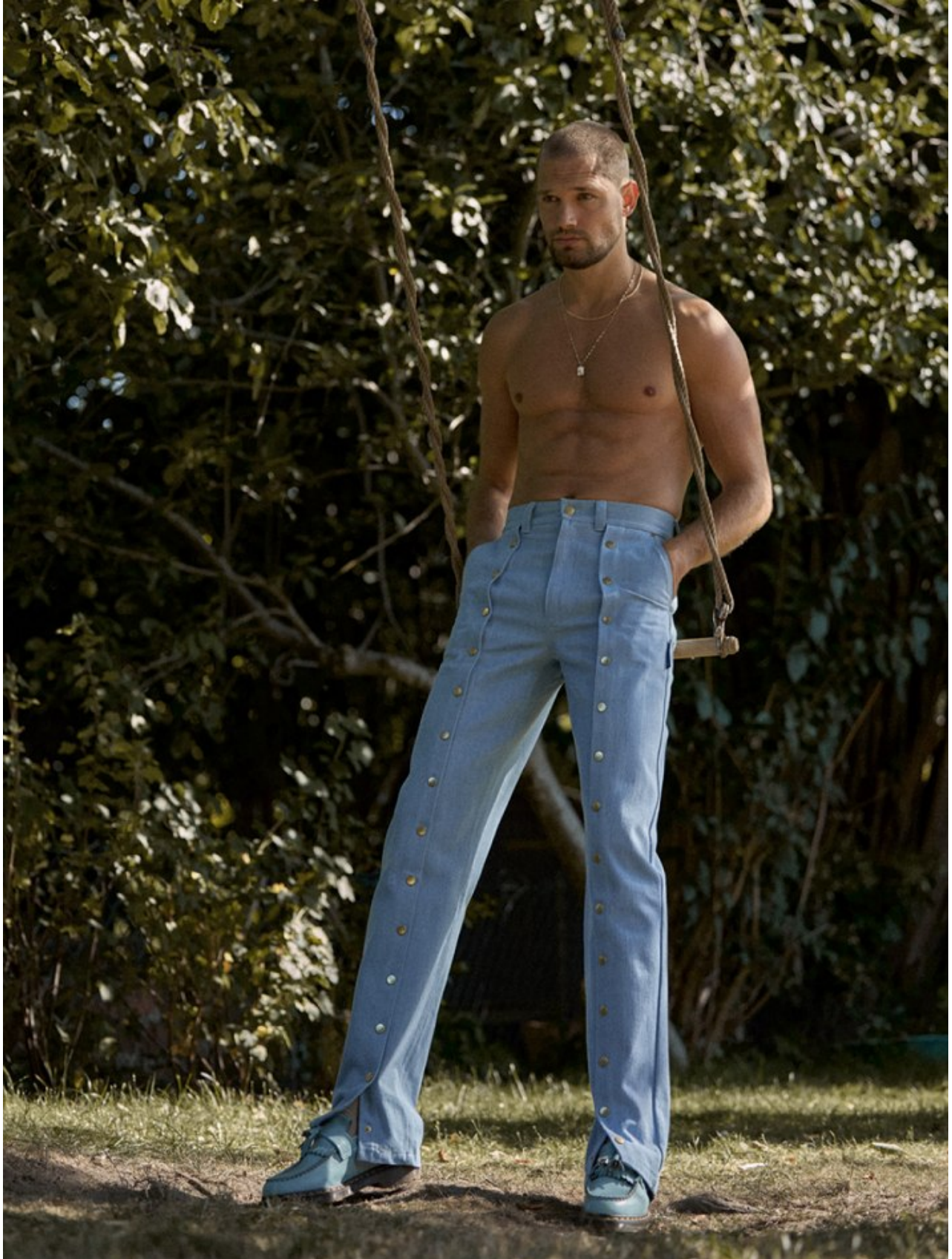
STEFAN POLLMAN

Height: 189cm Chest: 104cm Waist: 82cm Shoe: 9.5 UK Hair: Blonde Eyes: Blue/Grey



# BOSS MODELS

CAPE TOWN



STEFAN POLLMAN

Height: 189cm Chest: 104cm Waist: 82cm Shoe: 9.5 UK Hair: Blonde Eyes: Blue/Grey



# BOSS MODELS

CAPE TOWN



STEFAN POLLMAN

Height: 189cm Chest: 104cm Waist: 82cm Shoe: 9.5 UK Hair: Blonde Eyes: Blue/Grey

# BOSS MODELS

CAPE TOWN



Tank Top H&M  
Trousers GUJOE SURPLUS

## STEFAN POLLMAN

Height: 189cm Chest: 104cm Waist: 82cm Shoe: 9.5 UK Hair: Blonde Eyes: Blue/Grey

# BOSS MODELS

CAPE TOWN



STEFAN POLLMAN

Height: 189cm Chest: 104cm Waist: 82cm Shoe: 9.5 UK Hair: Blonde Eyes: Blue/Grey



# BOSS MODELS

CAPE TOWN



STEFAN POLLMAN

Height: 189cm Chest: 104cm Waist: 82cm Shoe: 9.5 UK Hair: Blonde Eyes: Blue/Grey

# BOSS MODELS

CAPE TOWN



**COUNTRY ROAD**

AUTUMN 2018

**STEFAN POLLMAN**

Height: 189cm Chest: 104cm Waist: 82cm Shoe: 9.5 UK Hair: Blonde Eyes: Blue/Grey

# BOSS MODELS

CAPE TOWN



STEFAN POLLMAN

Height: 189cm Chest: 104cm Waist: 82cm Shoe: 9.5 UK Hair: Blonde Eyes: Blue/Grey



# BOSS MODELS

CAPE TOWN



STEFAN POLLMAN

Height: 189cm Chest: 104cm Waist: 82cm Shoe: 9.5 UK Hair: Blonde Eyes: Blue/Grey



# BOSS MODELS

CAPE TOWN



STEFAN POLLMAN

Height: 189cm Chest: 104cm Waist: 82cm Shoe: 9.5 UK Hair: Blonde Eyes: Blue/Grey



# BOSS MODELS

CAPE TOWN

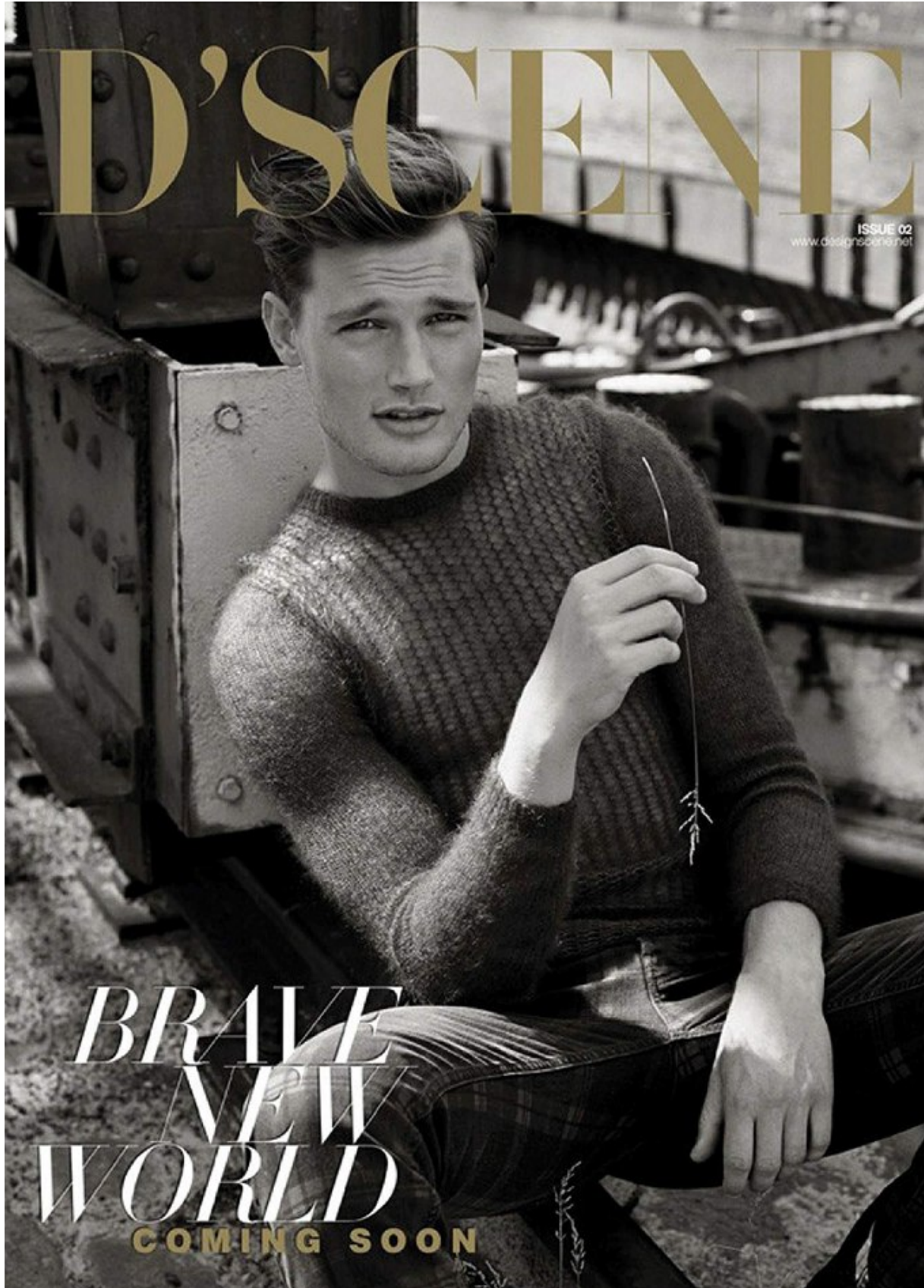


STEFAN POLLMAN

Height: 189cm Chest: 104cm Waist: 82cm Shoe: 9.5 UK Hair: Blonde Eyes: Blue/Grey

# BOSS MODELS

CAPE TOWN



STEFAN POLLMAN

Height: 189cm Chest: 104cm Waist: 82cm Shoe: 9.5 UK Hair: Blonde Eyes: Blue/Grey



# BOSS MODELS

CAPE TOWN



STEFAN POLLMAN

Height: 189cm Chest: 104cm Waist: 82cm Shoe: 9.5 UK Hair: Blonde Eyes: Blue/Grey

# BOSS MODELS

CAPE TOWN

# WISHI



## SENSE OF PLACE

WHERE THE RICH AND ROYAL STAY IN  
NEW ZEALAND, THE HIDDEN CHARMS OF  
PAXOS, THE ST REGIS ROME, INTERIORS  
OF ANTWERP, LEVI'S, AESOP, ALLBIRDS  
+ THE REINVENTION OF DAVID JONES

FEBRUARY 2019  
THE AUSTRALIAN

## STEFAN POLLMAN

Height: 189cm Chest: 104cm Waist: 82cm Shoe: 9.5 UK Hair: Blonde Eyes: Blue/Grey



# BOSS MODELS

CAPE TOWN



STEFAN POLLMAN

Height: 189cm Chest: 104cm Waist: 82cm Shoe: 9.5 UK Hair: Blonde Eyes: Blue/Grey

# BOSS MODELS

CAPE TOWN

*givenchy t-shirt, jeans and  
dries van noten reversible  
trench all from robby ingham  
[www.robbyingham.com](http://www.robbyingham.com),  
hermes sandals.*

**photography** sam bisso  
**fashion director** kelvin harries  
**hair** aiden xydis **make-up** peter beard  
**model** stefan @ emg  
**videographer** helen turner  
**shot at** pix on location studio



## STEFAN POLLMAN

Height: 189cm Chest: 104cm Waist: 82cm Shoe: 9.5 UK Hair: Blonde Eyes: Blue/Grey



# BOSS MODELS

CAPE TOWN



**STEFAN POLLMAN**

Height: 189cm Chest: 104cm Waist: 82cm Shoe: 9.5 UK Hair: Blonde Eyes: Blue/Grey

# BOSS MODELS

CAPE TOWN



STEFAN POLLMAN

Height: 189cm Chest: 104cm Waist: 82cm Shoe: 9.5 UK Hair: Blonde Eyes: Blue/Grey



# BOSS MODELS

CAPE TOWN



## STEFAN POLLMAN

Height: 189cm Chest: 104cm Waist: 82cm Shoe: 9.5 UK Hair: Blonde Eyes: Blue/Grey

# BOSS MODELS

CAPE TOWN



STEFAN POLLMAN

Height: 189cm Chest: 104cm Waist: 82cm Shoe: 9.5 UK Hair: Blonde Eyes: Blue/Grey



# BOSS MODELS

CAPE TOWN



**STEFAN POLLMAN**

Height: 189cm Chest: 104cm Waist: 82cm Shoe: 9.5 UK Hair: Blonde Eyes: Blue/Grey

# BOSS MODELS

CAPE TOWN



STEFAN POLLMAN

Height: 189cm Chest: 104cm Waist: 82cm Shoe: 9.5 UK Hair: Blonde Eyes: Blue/Grey



# BOSS MODELS

CAPE TOWN



STEFAN POLLMAN

Height: 189cm Chest: 104cm Waist: 82cm Shoe: 9.5 UK Hair: Blonde Eyes: Blue/Grey

# BOSS MODELS

CAPE TOWN



STEFAN POLLMAN

Height: 189cm Chest: 104cm Waist: 82cm Shoe: 9.5 UK Hair: Blonde Eyes: Blue/Grey



# BOSS MODELS

CAPE TOWN



**STEFAN POLLMAN**

Height: 189cm Chest: 104cm Waist: 82cm Shoe: 9.5 UK Hair: Blonde Eyes: Blue/Grey

# BOSS MODELS

CAPE TOWN



A DAY AT  
**THE BEACH**

BY DENNIS WEBER

STEFAN POLLMAN

Height: 189cm Chest: 104cm Waist: 82cm Shoe: 9.5 UK Hair: Blonde Eyes: Blue/Grey



# BOSS MODELS

CAPE TOWN

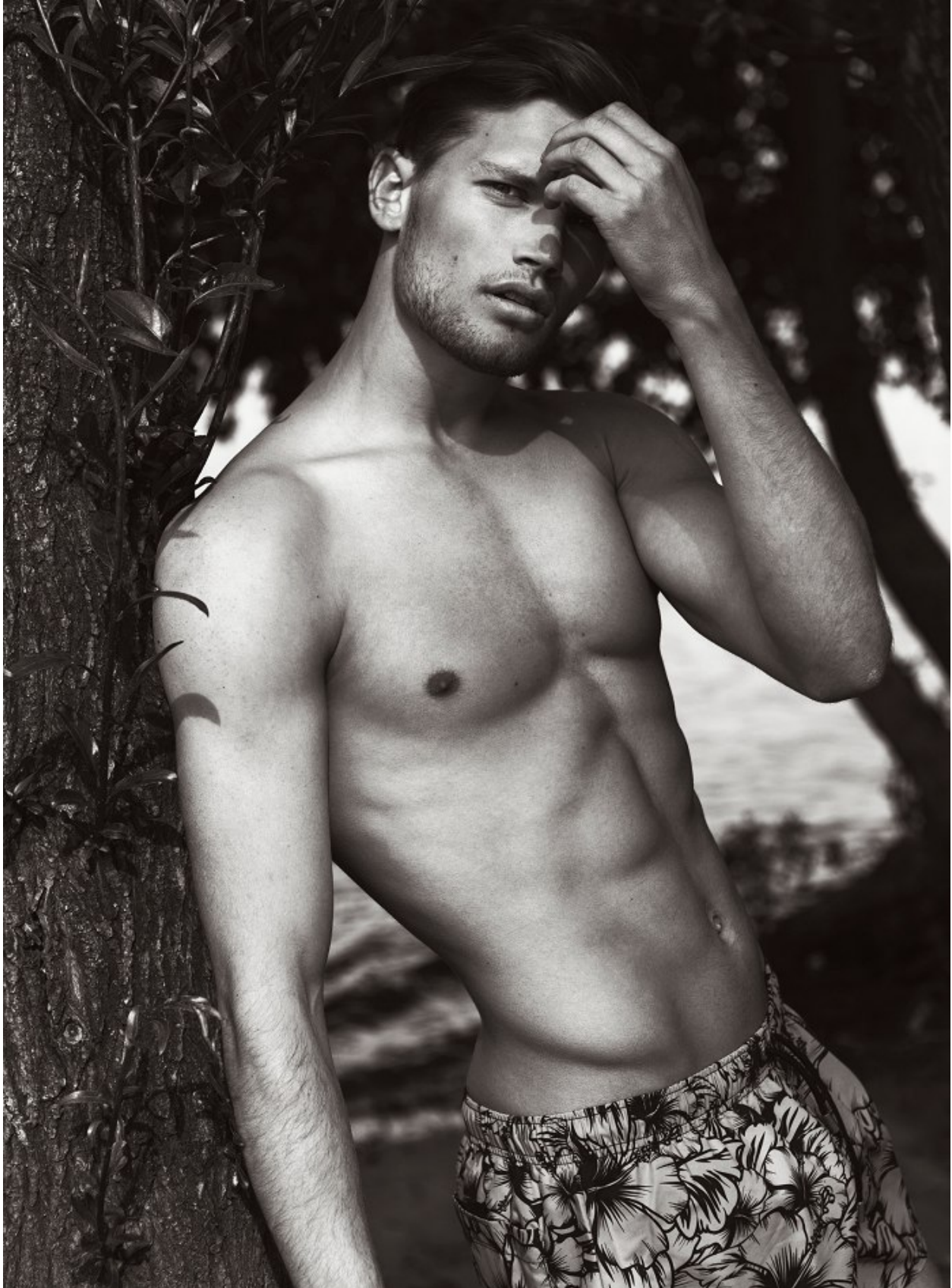


STEFAN POLLMAN

Height: 189cm Chest: 104cm Waist: 82cm Shoe: 9.5 UK Hair: Blonde Eyes: Blue/Grey

# BOSS MODELS

CAPE TOWN



STEFAN POLLMAN

Height: 189cm Chest: 104cm Waist: 82cm Shoe: 9.5 UK Hair: Blonde Eyes: Blue/Grey



# BOSS MODELS

CAPE TOWN



STEFAN POLLMAN

Height: 189cm Chest: 104cm Waist: 82cm Shoe: 9.5 UK Hair: Blonde Eyes: Blue/Grey

# BOSS MODELS

CAPE TOWN



# REMUS UOMO

STEFAN POLLMAN

Height: 189cm Chest: 104cm Waist: 82cm Shoe: 9.5 UK Hair: Blonde Eyes: Blue/Grey



# BOSS MODELS

CAPE TOWN



**REMUS UOMO**

STEFAN POLLMAN

Height: 189cm Chest: 104cm Waist: 82cm Shoe: 9.5 UK Hair: Blonde Eyes: Blue/Grey

# BOSS MODELS

CAPE TOWN



STEFAN POLLMAN

Height: 189cm Chest: 104cm Waist: 82cm Shoe: 9.5 UK Hair: Blonde Eyes: Blue/Grey



# BOSS MODELS

CAPE TOWN



*raf simons shirt and  
trench from assin.*

## STEFAN POLLMAN

Height: 189cm Chest: 104cm Waist: 82cm Shoe: 9.5 UK Hair: Blonde Eyes: Blue/Grey

# BOSS MODELS

CAPE TOWN

male model scene editorial

**STEFAN**

z zegna exclusive  
photo pat supsiri

STEFAN POLLMAN

Height: 189cm Chest: 104cm Waist: 82cm Shoe: 9.5 UK Hair: Blonde Eyes: Blue/Grey



# BOSS MODELS

CAPE TOWN



## STEFAN POLLMAN

Height: 189cm Chest: 104cm Waist: 82cm Shoe: 9.5 UK Hair: Blonde Eyes: Blue/Grey

# BOSS MODELS

CAPE TOWN



**STEFAN POLLMAN**

Height: 189cm Chest: 104cm Waist: 82cm Shoe: 9.5 UK Hair: Blonde Eyes: Blue/Grey



# BOSS MODELS

CAPE TOWN



STEFAN POLLMAN

Height: 189cm Chest: 104cm Waist: 82cm Shoe: 9.5 UK Hair: Blonde Eyes: Blue/Grey

# BOSS MODELS

CAPE TOWN



STEFAN POLLMAN

Height: 189cm Chest: 104cm Waist: 82cm Shoe: 9.5 UK Hair: Blonde Eyes: Blue/Grey



# BOSS MODELS

CAPE TOWN



STEFAN POLLMAN

Height: 189cm Chest: 104cm Waist: 82cm Shoe: 9.5 UK Hair: Blonde Eyes: Blue/Grey

# BOSS MODELS

CAPE TOWN



STEFAN POLLMAN

Height: 189cm Chest: 104cm Waist: 82cm Shoe: 9.5 UK Hair: Blonde Eyes: Blue/Grey



# BOSS MODELS

CAPE TOWN



STEFAN POLLMAN

Height: 189cm Chest: 104cm Waist: 82cm Shoe: 9.5 UK Hair: Blonde Eyes: Blue/Grey

# BOSS MODELS

CAPE TOWN



Coat ¥63,000+tax Drawing Numbers Knit ¥21,000+tax Drawing Numbers Shirts ¥16,000+tax Drawing Numbers  
Jeans ¥29,800+tax NOBLE Shoes ¥57,000+tax CHEANEY

## STEFAN POLLMAN

Height: 189cm Chest: 104cm Waist: 82cm Shoe: 9.5 UK Hair: Blonde Eyes: Blue/Grey



# BOSS MODELS

CAPE TOWN

GQSTYLE



**Left**  
Wool jacket, \$500, wool knit, \$150, wool pants, \$190, leather shoes, \$400, and leather belt, \$150, all by Aquila.

**Right**  
Wool knit, \$150, wool pants, \$200 and leather loafers, \$400, all by Aquila; acetate glasses, POA, by Balenciaga at Harrolds.

Grooming Madison Voloshin using V75 at Vivien's Creative Talent Robert and Stefan at IMG Furniture A&A television, \$2450, leather armchair, \$1050, and gold stretch velvet 'Ovalis' egg-shaped chair, \$22,000, all from Vampt Vintage Design; vamptvintagedesign.com

## AQUILA

Originally specialising in shoes, Aquila was inspired by Italian footwear techniques. In 2012, it then launched a full menswear line that presented a fresh take on staples such as Italian wool suiting. This season, Aquila offers plenty of suiting options to let you stand out from the style pack, from shades of burgundy to cool patterns and prints.

MAY 2017 GQ.COM.AU 81

## STEFAN POLLMAN

Height: 189cm Chest: 104cm Waist: 82cm Shoe: 9.5 UK Hair: Blonde Eyes: Blue/Grey

# BOSS MODELS

CAPE TOWN

GQSTYLE

**Left**  
Leather jacket, \$550,  
cotton shirt, \$130, wool  
tie, \$70, wool suit pants,  
\$170, and leather shoes,  
\$200, all by Jack London.

**Right**  
Leather jacket, \$500,  
cotton polo, \$99, wool  
pants, \$170 and suede/  
crepe shoes, \$200, all by  
Jack London; acetate/  
palladium glasses, P&A,  
by Balenciaga at Harrolds.



## JACK LONDON

Inspired by '60s rock 'n' roll, this Melbourne label is known for its modern Australian menswear. The latest collection delivers slim silhouettes and plenty of attitude - think drainpipe jeans, slim blazers and tailored suiting. Jack London is the ideal way to take your office attire to the next level - keep the shirt and tie, but try ditching the suit jacket for a fitted leather one.

MAY 2017 GQ.COM.AU 89

## STEFAN POLLMAN

Height: 189cm Chest: 104cm Waist: 82cm Shoe: 9.5 UK Hair: Blonde Eyes: Blue/Grey



# BOSS MODELS

CAPE TOWN



STEFAN POLLMAN

Height: 189cm Chest: 104cm Waist: 82cm Shoe: 9.5 UK Hair: Blonde Eyes: Blue/Grey

# BOSS MODELS

CAPE TOWN



STEFAN POLLMAN

Height: 189cm Chest: 104cm Waist: 82cm Shoe: 9.5 UK Hair: Blonde Eyes: Blue/Grey