

# BOSS MODELS

CAPE TOWN



## STEFAN POLLMAN

Height: 189cm Chest: 104cm Waist: 82cm Shoe: 9.5 UK Hair: Blonde Eyes: Blue/Grey

# BOSS MODELS

CAPE TOWN



## STEFAN POLLMAN

Height: 189cm Chest: 104cm Waist: 82cm Shoe: 9.5 UK Hair: Blonde Eyes: Blue/Grey



# BOSS MODELS

CAPE TOWN



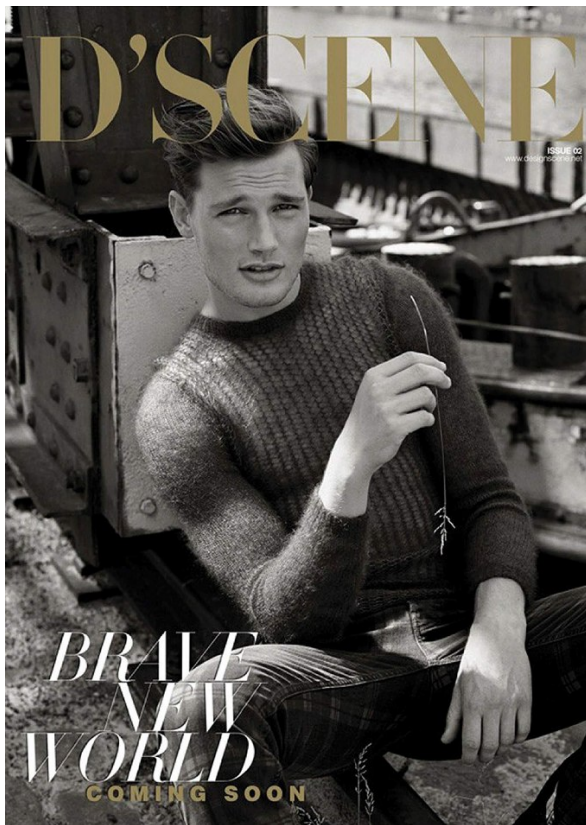
STEFAN POLLMAN

Height: 189cm Chest: 104cm Waist: 82cm Shoe: 9.5 UK Hair: Blonde Eyes: Blue/Grey



# BOSS MODELS

CAPE TOWN



STEFAN POLLMAN

Height: 189cm Chest: 104cm Waist: 82cm Shoe: 9.5 UK Hair: Blonde Eyes: Blue/Grey



# BOSS MODELS

CAPE TOWN



## STEFAN POLLMAN

Height: 189cm Chest: 104cm Waist: 82cm Shoe: 9.5 UK Hair: Blonde Eyes: Blue/Grey



# BOSS MODELS

CAPE TOWN



STEFAN POLLMAN

Height: 189cm Chest: 104cm Waist: 82cm Shoe: 9.5 UK Hair: Blonde Eyes: Blue/Grey



# BOSS MODELS

CAPE TOWN



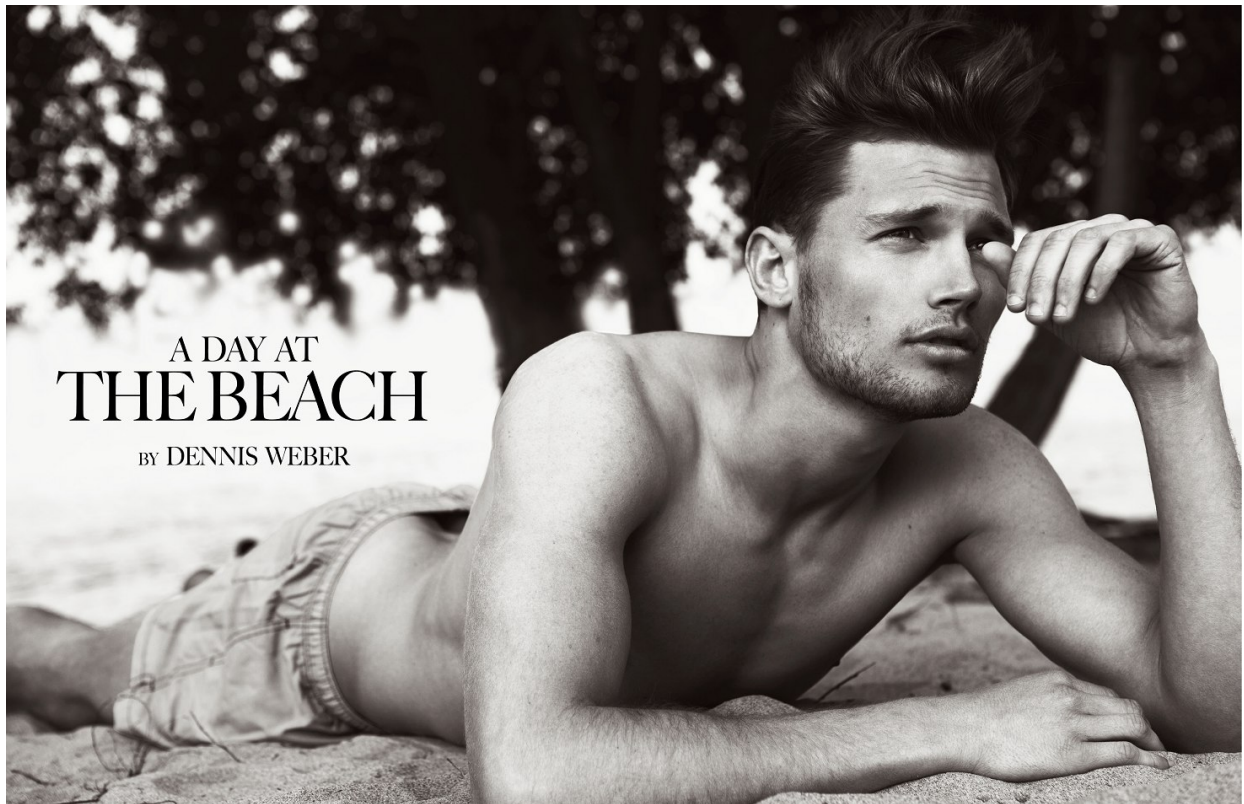
## STEFAN POLLMAN

Height: 189cm Chest: 104cm Waist: 82cm Shoe: 9.5 UK Hair: Blonde Eyes: Blue/Grey



# BOSS MODELS

CAPE TOWN



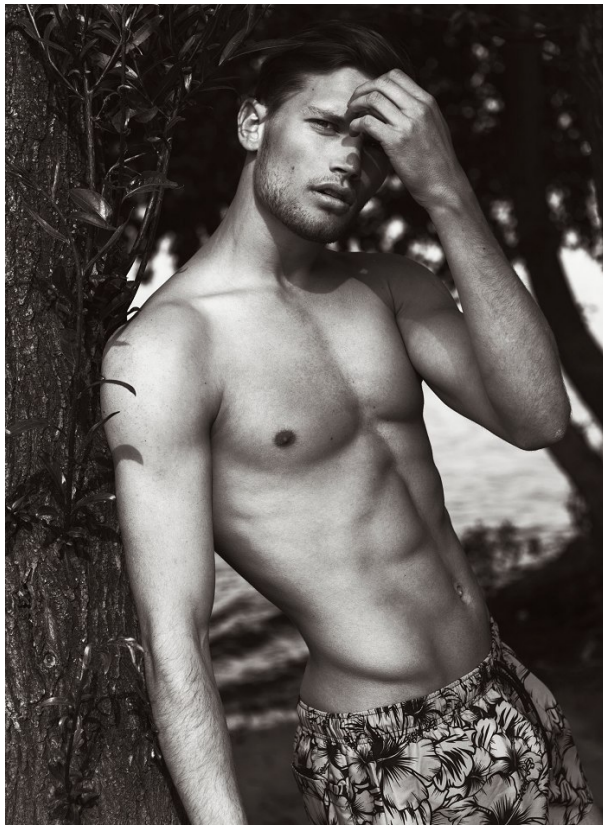
STEFAN POLLMAN

Height: 189cm Chest: 104cm Waist: 82cm Shoe: 9.5 UK Hair: Blonde Eyes: Blue/Grey



# BOSS MODELS

CAPE TOWN



STEFAN POLLMAN

Height: 189cm Chest: 104cm Waist: 82cm Shoe: 9.5 UK Hair: Blonde Eyes: Blue/Grey



# BOSS MODELS

CAPE TOWN



## STEFAN POLLMAN

Height: 189cm Chest: 104cm Waist: 82cm Shoe: 9.5 UK Hair: Blonde Eyes: Blue/Grey



# BOSS MODELS

CAPE TOWN



male model scene editorial

**STEFAN**

z zegna exclusive  
photo pat supsiri



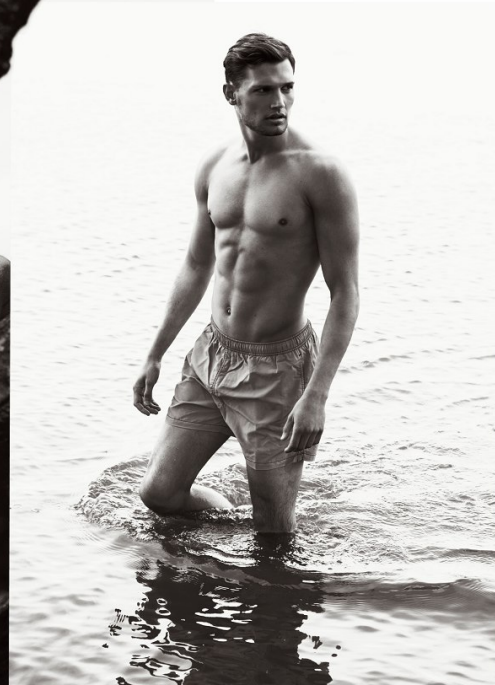
STEFAN POLLMAN

Height: 189cm Chest: 104cm Waist: 82cm Shoe: 9.5 UK Hair: Blonde Eyes: Blue/Grey



# BOSS MODELS

CAPE TOWN



STEFAN POLLMAN

Height: 189cm Chest: 104cm Waist: 82cm Shoe: 9.5 UK Hair: Blonde Eyes: Blue/Grey







# BOSS MODELS

CAPE TOWN

ggSTYLE

Left  
Wool jacket, \$800, vest/tee, \$100, card  
pants, \$100, leather shoes, \$400, and  
leather bag, \$100, all by  
Aquila.

Right  
Wool shirt, \$100, wool pants, \$200,  
and leather jacket, \$400, all by  
Aquila. Leather gloves, \$20, by  
Balmuccia at Harrolds.

Grooming: Madison Vintage using V75 as  
Viggo's Creative  
Team. Hair and beard at RSC.  
Furniture: AGA Furniture, \$2,400. Leather  
armchair, \$1,000, and leather  
chair, \$1,400, all from Vintage Design,  
www.vintagevintage.com

**AQUILA**

Originally spun in Italy, Aquila was inspired by Italian tortoise techniques. In 2012, it then launched a full  
collection line that presented a fresh take on Italian style with a modern twist. This season, Aquila offers a variety  
of styling options to let you stand out from the style pack, from shades of burgundy to cool patterns and prints.

MAY 2017 GG.COM.AU #1

GG0017091 #1 31/05/2017 10:06 AM

ggSTYLE

Left  
Leather jacket, €200,  
cotton shirt, \$100, wool  
tie, \$100, wool card pants,  
€100, and leather shoes,  
€100, all by Jack London.

Right  
Leather jacket, €200,  
cotton polo, \$95, wool  
pants, €100, and leather  
trousers, €200, all by  
Jack London. Leather  
gloves, €20, by  
Balmuccia at Harrolds.

**JACK LONDON**

Inspired by 19th-century cowboy fashion, Jack London offers a modern, full-ribbed, ribbed sweater. The dress collection delves  
into heritage and plenty of all-itude - from drapery pants, silk blazers and tailored suits, Jack London is the one who  
to take your office attire to the next level - keep the shirt and tie, but try adding the suit jacket for a fitted leather one.

MAY 2017 GG.COM.AU #9

GG0017099 #9 31/05/2017 10:06 AM



## STEFAN POLLMAN

Height: 189cm Chest: 104cm Waist: 82cm Shoe: 9.5 UK Hair: Blonde Eyes: Blue/Grey



# BOSS MODELS

CAPE TOWN



STEFAN POLLMAN

Height: 189cm Chest: 104cm Waist: 82cm Shoe: 9.5 UK Hair: Blonde Eyes: Blue/Grey