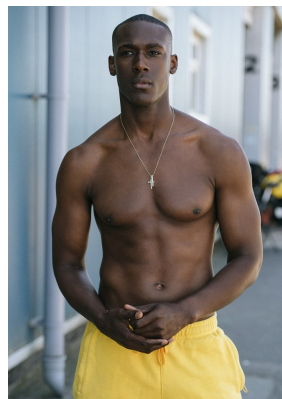
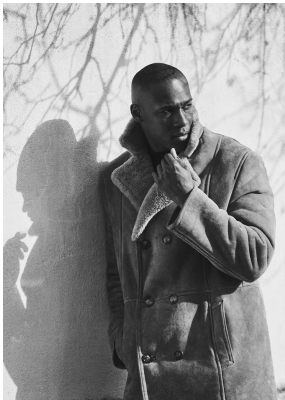
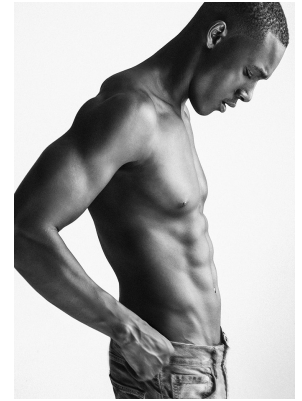
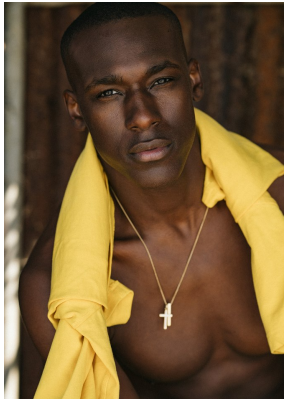


BOSS MODELS

CAPE TOWN

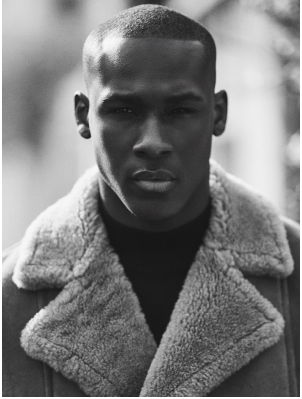


EMMANUEL AMORIN

Height: 188cm Chest: 97cm Waist: 79cm Suit: 38 R Shoe: 10.5 UK Hair: Black Eyes: Brown

BOSS MODELS

CAPE TOWN



EMMANUEL AMORIN

Height: 188cm Chest: 97cm Waist: 79cm Suit: 38 R Shoe: 10.5 UK Hair: Black Eyes: Brown