

# BOSS MODELS

CAPE TOWN



ANDREW HULME

Height: 188cm Chest: 97cm Waist: 79cm Suit: 38 R Shoe: 10.5 UK Hair: Light Brown Eyes: Brown

# BOSS MODELS

CAPE TOWN



ANDREW HULME

Height: 188cm Chest: 97cm Waist: 79cm Suit: 38 R Shoe: 10.5 UK Hair: Light Brown Eyes: Brown

# BOSS MODELS

CAPE TOWN



GENTLEMAN'S JOURNAL



FASHION

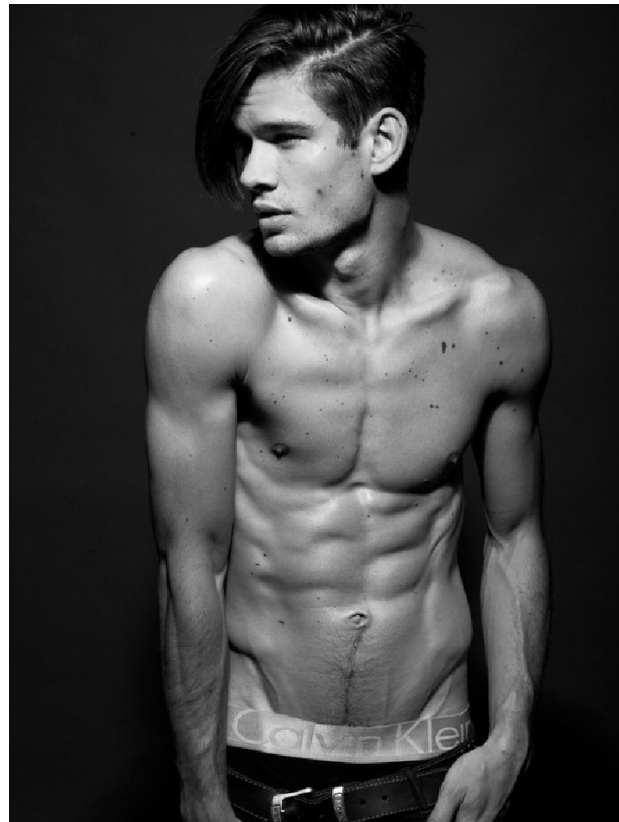
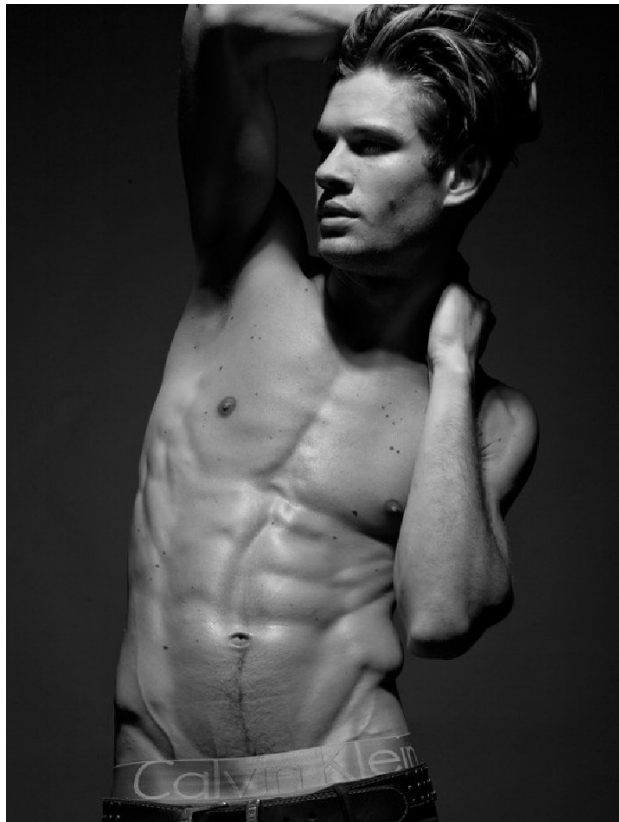
75

## ANDREW HULME

Height: 188cm Chest: 97cm Waist: 79cm Suit: 38 R Shoe: 10.5 UK Hair: Light Brown Eyes: Brown

# BOSS MODELS

CAPE TOWN



ANDREW HULME

Height: 188cm Chest: 97cm Waist: 79cm Suit: 38 R Shoe: 10.5 UK Hair: Light Brown Eyes: Brown

# BOSS MODELS

CAPE TOWN



**ANDREW HULME**

Height: 188cm Chest: 97cm Waist: 79cm Suit: 38 R Shoe: 10.5 UK Hair: Light Brown Eyes: Brown

# BOSS MODELS

CAPE TOWN



**ANDREW HULME**

Height: 188cm Chest: 97cm Waist: 79cm Suit: 38 R Shoe: 10.5 UK Hair: Light Brown Eyes: Brown