

# W MANAGEMENT

*A Division Of Boss Models*

FASHION



**CHANTAL HULLEY**

Height: 171cm Bust: 87cm Waist: 68cm Hips: 90cm Shoe: 6 UK Hair: Light Blonde Eyes: Blue



AMY-LEE  
STEENKAMP  
Fashion Editor

## Timeless LUXE

Beat the chill with stylish wardrobe pieces that will get you through this winter and many more

### CHANTAL HULLEY

Height: 171cm Bust: 87cm Waist: 68cm Hips: 90cm Shoe: 6 UK Hair: Light Blonde Eyes: Blue



# W MANAGEMENT

*A Division Of Boss Models*



**Blouse** R299,99 and  
**boots** R549,99,  
both Edgars; **jacket**  
R1 199, Queenspark;  
**pants** R899, Zara; **belt**  
R199, Foschini

#### PREVIOUS PAGE

**Polo neck** R299, **jacket**  
R799 and **boots** R799, all  
Foschini; **pants** R299,99,  
Edgars; **earrings** R250  
and **ring** R270, both  
Lovisa; **gloves** R179,99,  
H&M

## CHANTAL HULLEY

Height: 171cm Bust: 87cm Waist: 68cm Hips: 90cm Shoe: 6 UK Hair: Light Blonde Eyes: Blue

# W MANAGEMENT

*A Division Of Boss Models*



CHANTAL HULLEY

Height: 171cm Bust: 87cm Waist: 68cm Hips: 90cm Shoe: 6 UK Hair: Light Blonde Eyes: Blue



# W MANAGEMENT

*A Division Of Boss Models*



**CHANTAL HULLEY**

Height: 171cm Bust: 87cm Waist: 68cm Hips: 90cm Shoe: 6 UK Hair: Light Blonde Eyes: Blue

# W MANAGEMENT

*A Division Of Boss Models*



**CHANTAL HULLEY**

Height: 171cm Bust: 87cm Waist: 68cm Hips: 90cm Shoe: 6 UK Hair: Light Blonde Eyes: Blue

# W MANAGEMENT

*A Division Of Boss Models*



**CHANTAL HULLEY**

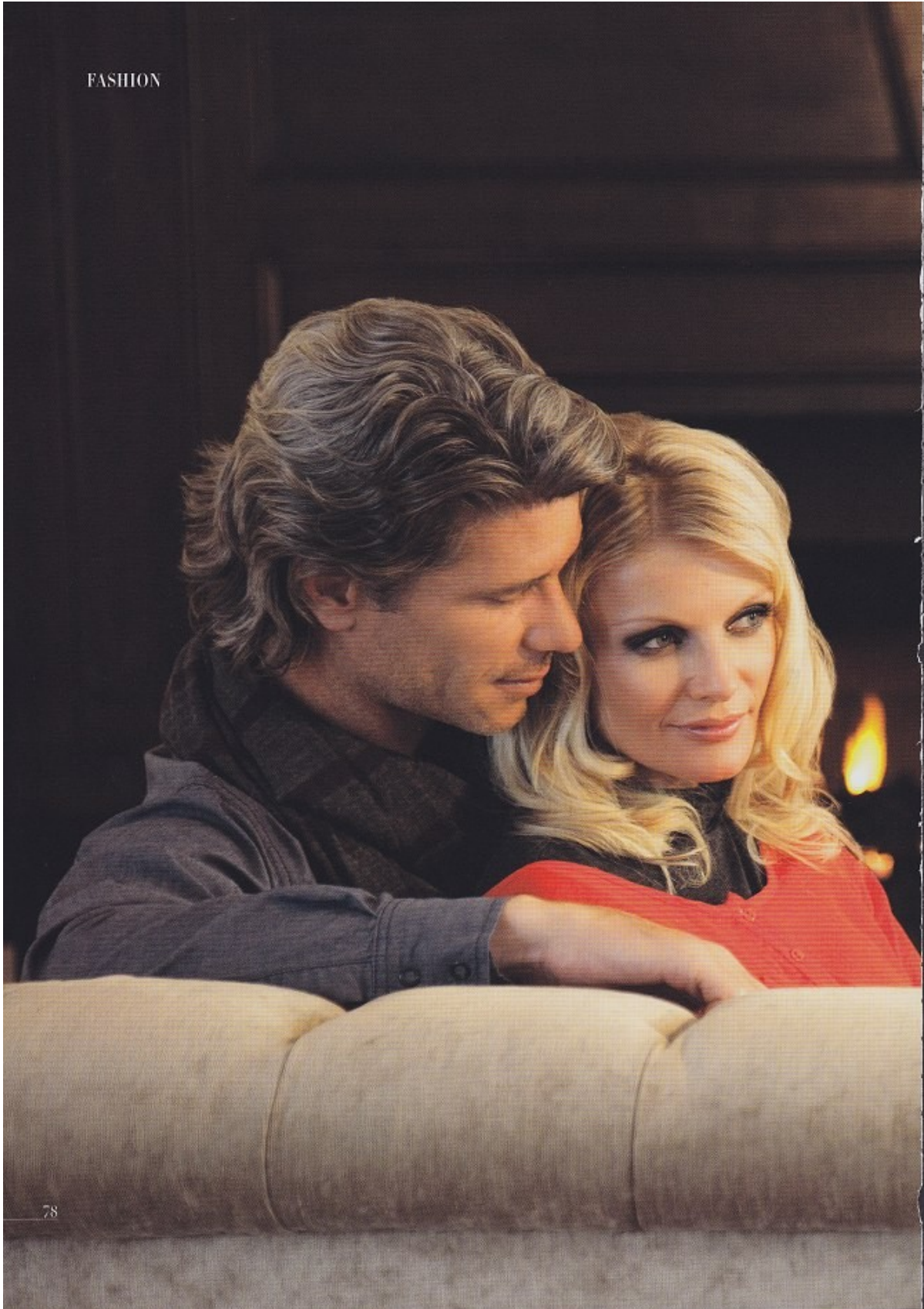
Height: 171cm Bust: 87cm Waist: 68cm Hips: 90cm Shoe: 6 UK Hair: Light Blonde Eyes: Blue



# W MANAGEMENT

*A Division Of Boss Models*

FASHION



78

## CHANTAL HULLEY

Height: 171cm Bust: 87cm Waist: 68cm Hips: 90cm Shoe: 6 UK Hair: Light Blonde Eyes: Blue



# W MANAGEMENT

*A Division Of Boss Models*



**Polo neck:** R18999, Pick 'n Pay  
**Clothing coat:** R1 499,  
Woolworths; **skirt:** R599,  
Queenspark; **boots:** R699 and  
**belt:** R129, both Foschini;  
**earrings (part of set):** R250,  
Lovisa; **necklace:** R120,  
Queenspark

## CHANTAL HULLEY

Height: 171cm Bust: 87cm Waist: 68cm Hips: 90cm Shoe: 6 UK Hair: Light Blonde Eyes: Blue

# W MANAGEMENT

*A Division Of Boss Models*



**CHANTAL HULLEY**

Height: 171cm Bust: 87cm Waist: 68cm Hips: 90cm Shoe: 6 UK Hair: Light Blonde Eyes: Blue



# W MANAGEMENT

*A Division Of Boss Models*



✦  
Top R11999, Pick 'n Pay  
Clothing; **tassel jersey**  
R899 and **coat**  
(**poncho**) R699, both  
Queenspark; **pleather**  
**skirt** R699,  
Woolworths; **boots**  
R1 999, Foschini

CHANTAL HULLEY

Height: 171cm Bust: 87cm Waist: 68cm Hips: 90cm Shoe: 6 UK Hair: Light Blonde Eyes: Blue

# W MANAGEMENT

*A Division Of Boss Models*



#### **Opposite**

Shirt R1 200, Robert Daniel;  
jacket R3 500, Craig Port;  
pants R250, Woolworths;  
shoes R1 495, Spitz

#### **This page**

Blouse R800, Marion and Lindie;  
jeans R599, Country Road;  
shoes R9 450, Louis Vuitton

## CHANTAL HULLEY

Height: 171cm Bust: 87cm Waist: 68cm Hips: 90cm Shoe: 6 UK Hair: Light Blonde Eyes: Blue



# W MANAGEMENT

*A Division Of Boss Models*

fashion



36 **wati** | August 2024

**CHANTAL HULLEY**

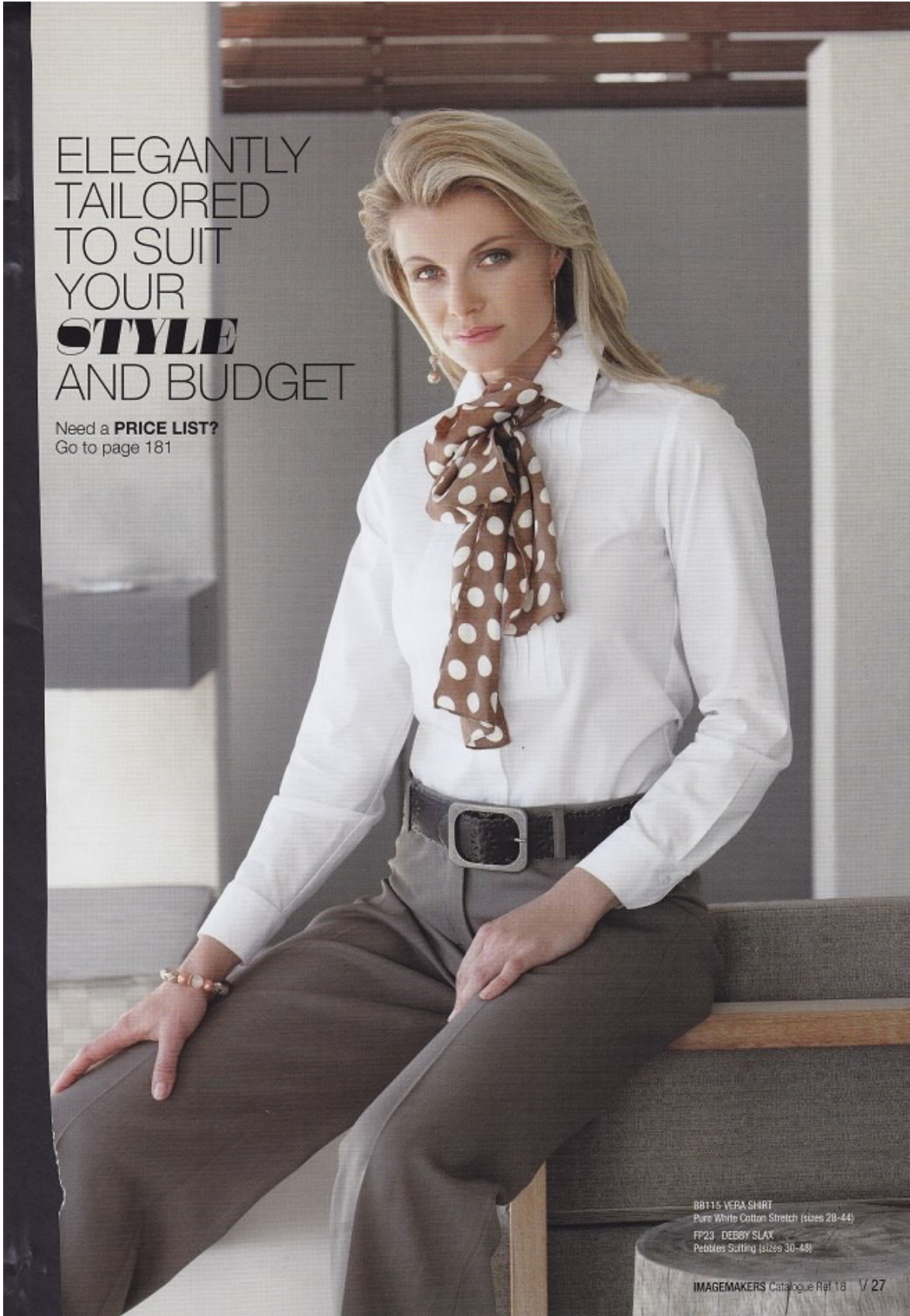
Height: 171cm Bust: 87cm Waist: 68cm Hips: 90cm Shoe: 6 UK Hair: Light Blonde Eyes: Blue

# W MANAGEMENT

*A Division Of Boss Models*

ELEGANTLY  
TAILORED  
TO SUIT  
YOUR  
**STYLE**  
AND BUDGET

Need a **PRICE LIST?**  
Go to page 181



**CHANTAL HULLEY**

Height: 171cm Bust: 87cm Waist: 68cm Hips: 90cm Shoe: 6 UK Hair: Light Blonde Eyes: Blue



# W MANAGEMENT

*A Division Of Boss Models*



**CHANTAL HULLEY**

Height: 171cm Bust: 87cm Waist: 68cm Hips: 90cm Shoe: 6 UK Hair: Light Blonde Eyes: Blue

# W MANAGEMENT

*A Division Of Boss Models*



**CHANTAL HULLEY**

Height: 171cm Bust: 87cm Waist: 68cm Hips: 90cm Shoe: 6 UK Hair: Light Blonde Eyes: Blue



# W MANAGEMENT

*A Division Of Boss Models*



**CHANTAL HULLEY**

Height: 171cm Bust: 87cm Waist: 68cm Hips: 90cm Shoe: 6 UK Hair: Light Blonde Eyes: Blue

# W MANAGEMENT

*A Division Of Boss Models*



**CHANTAL HULLEY**

Height: 171cm Bust: 87cm Waist: 68cm Hips: 90cm Shoe: 6 UK Hair: Light Blonde Eyes: Blue



# W MANAGEMENT

*A Division Of Boss Models*



**CHANTAL HULLEY**

Height: 171cm Bust: 87cm Waist: 68cm Hips: 90cm Shoe: 6 UK Hair: Light Blonde Eyes: Blue

# W MANAGEMENT

*A Division Of Boss Models*



**CHANTAL HULLEY**

Height: 171cm Bust: 87cm Waist: 68cm Hips: 90cm Shoe: 6 UK Hair: Light Blonde Eyes: Blue



# W MANAGEMENT

*A Division Of Boss Models*



**Page 76**

Dress R99, Mr Price; earrings  
(part of set) R180, Lovisa;  
sneakers R199,95, Woolworths

**Page 77**

Christophe wears: Shirt R699,  
Country Road; blazer R1 399,  
Woolworths  
Chantal wears: Dress R699,  
Woolworths; earrings R650 and  
bangle R335, both Jangi

## CHANTAL HULLEY

Height: 171cm Bust: 87cm Waist: 68cm Hips: 90cm Shoe: 6 UK Hair: Light Blonde Eyes: Blue

# W MANAGEMENT

*A Division Of Boss Models*



CHANTAL HULLEY

Height: 171cm Bust: 87cm Waist: 68cm Hips: 90cm Shoe: 6 UK Hair: Light Blonde Eyes: Blue



# W MANAGEMENT

*A Division Of Boss Models*



CHANTAL HULLEY

Height: 171cm Bust: 87cm Waist: 68cm Hips: 90cm Shoe: 6 UK Hair: Light Blonde Eyes: Blue