

# W MANAGEMENT

*A Division Of Boss Models*



LINDI HINGSTON

Height: 170cm Bust: 86cm Waist: 60cm Hips: 88cm Shoe: 5 UK

# W MANAGEMENT

*A Division Of Boss Models*



LINDI HINGSTON

Height: 170cm Bust: 86cm Waist: 60cm Hips: 88cm Shoe: 5 UK



# W MANAGEMENT

A Division Of Boss Models



LINDI HINGSTON

Height: 170cm Bust: 86cm Waist: 60cm Hips: 88cm Shoe: 5 UK



# W MANAGEMENT

*A Division Of Boss Models*



LINDI HINGSTON

Height: 170cm Bust: 86cm Waist: 60cm Hips: 88cm Shoe: 5 UK



# W MANAGEMENT

*A Division Of Boss Models*

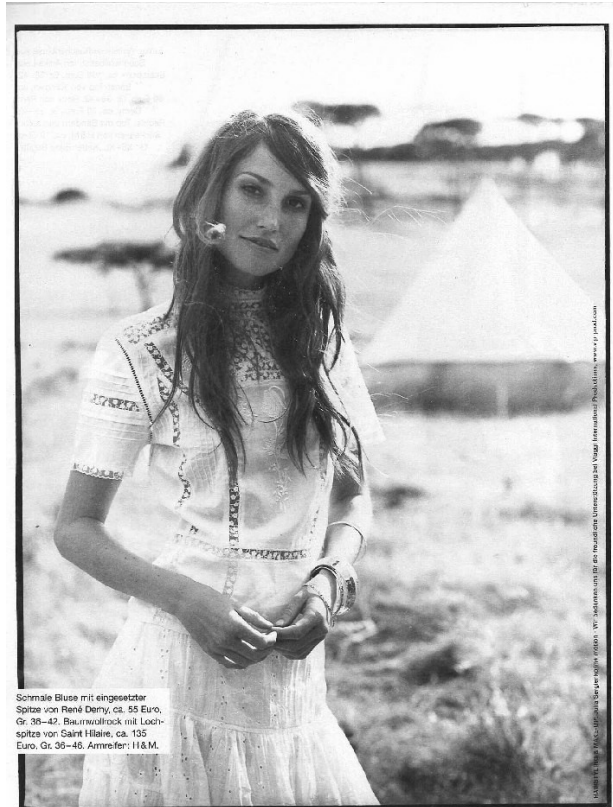


LINDI HINGSTON

Height: 170cm Bust: 86cm Waist: 60cm Hips: 88cm Shoe: 5 UK

# W MANAGEMENT

*A Division Of Boss Models*



Schmale Bluse mit eingestrichter Spitze von René Denry, ca. 65 Euro, Gr. 36-42. Baumwollrock mit Lochspitze von Saint Hilaire, ca. 135 Euro, Gr. 36-46, Armreefer: H&M.



LINDI HINGSTON

Height: 170cm Bust: 86cm Waist: 60cm Hips: 88cm Shoe: 5 UK

# W MANAGEMENT

*A Division Of Boss Models*



**LINDI HINGSTON**

Height: 170cm Bust: 86cm Waist: 60cm Hips: 88cm Shoe: 5 UK