

# W MANAGEMENT

*A Division Of Boss Models*



**ANITA OLCKERS**

Height: 172cm Bust: 86cm Waist: 62cm Hips: 92cm Shoe: 5 UK Hair: Dark Blonde Eyes: Green

# W MANAGEMENT

*A Division Of Boss Models*



## ANITA OLCKERS

Height: 172cm Bust: 86cm Waist: 62cm Hips: 92cm Shoe: 5 UK Hair: Dark Blonde Eyes: Green



# W MANAGEMENT

*A Division Of Boss Models*



## ANITA OLCKERS

Height: 172cm Bust: 86cm Waist: 62cm Hips: 92cm Shoe: 5 UK Hair: Dark Blonde Eyes: Green



# W MANAGEMENT

*A Division Of Boss Models*



SEDUCE YOURSELF! WHEN CHOOSING BASICS, PRIORITISE COMFORT - TRY OLD-FASHIONED VESTS AND LONG JOHNS IN PRETTY, SNUG FABRICS LIKE STRETCH, COTTON, SOFT KNITS AND MESH. BY RETHA JÜRGENS, PHOTOGRAPHY JOHAN WILKE

*A perfect fit*

ANITA OLCKERS

Height: 172cm Bust: 86cm Waist: 62cm Hips: 92cm Shoe: 5 UK Hair: Dark Blonde Eyes: Green



# W MANAGEMENT

*A Division Of Boss Models*



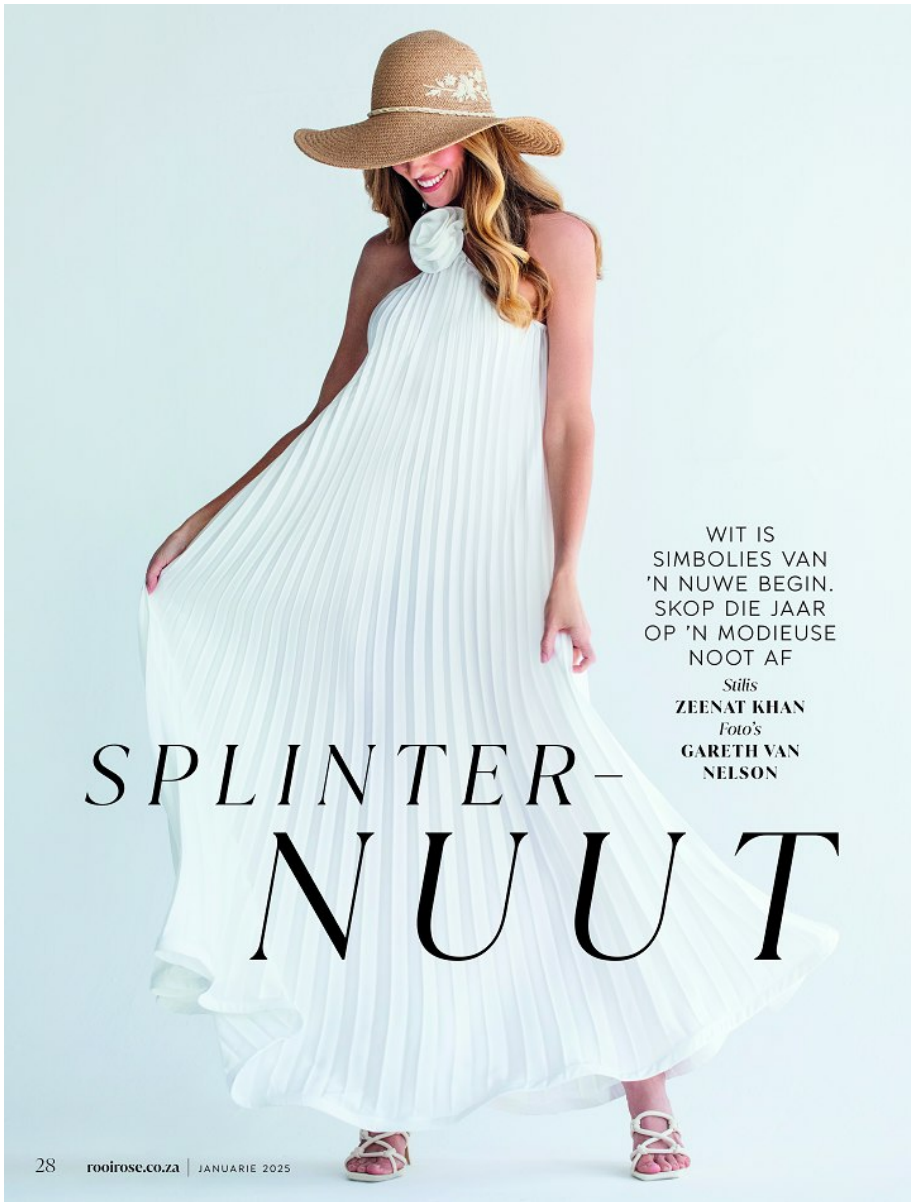
## ANITA OLCKERS

Height: 172cm Bust: 86cm Waist: 62cm Hips: 92cm Shoe: 5 UK Hair: Dark Blonde Eyes: Green



# W MANAGEMENT

A Division Of Boss Models



WIT IS  
SIMBOLIES VAN  
'N NUWE BEGIN.  
SKOP DIE JAAR  
OP 'N MODIEUSE  
NOOT AF

*Styls*  
**ZEENAT KHAN**  
*Foto's*  
**GARETH VAN  
NELSON**

# SPLINTER- NUUT

28 rooirose.co.za | JANUARIE 2025



mode

**STYLIS**  
ZEENAT KHAN  
**STYLISASSISTENT**  
ALEXANDRA BENJAMIN  
**FOTO'S**  
GARETH VAN NELSON/  
HABARI-MEDIAIMAGES  
**FOTOGRAFASSISTENT**  
LAUREN FREDERICKS  
**HARE EN GRIMERING**  
NICOLA LOOTS  
**MODEL**  
ANITA OLCKERS/BOSS MODEL  
MANAGEMENT

**VIND HIERDIE  
ARTIKELS BY:**  
**EDGARS**  
[www.edgars.co.za/collections/  
new-collection](http://www.edgars.co.za/collections/new-collection)  
**FOREVER NEW**  
[www.forevernew.co.za/  
collections/new-in](http://www.forevernew.co.za/collections/new-in)  
**FOSCHINI**  
[www.foschini.com/foschini](http://www.foschini.com/foschini)  
**H&M**  
[www.hm.com](http://www.hm.com)  
**LOVISA**  
[www.lovisajewellery.co.za](http://www.lovisajewellery.co.za)  
**LUXOTICA**  
[www.asstoluxotica.com/en/](http://www.asstoluxotica.com/en/)  
**NICO**  
[www.nico.co.za](http://www.nico.co.za)  
**POETRY**  
[www.poetrytores.co.za/z/new](http://www.poetrytores.co.za/z/new)  
**THE FIX**  
[www.zash.com/the-fix/ladies](http://www.zash.com/the-fix/ladies)  
**YDC**  
[www.ydc.co.za/home](http://www.ydc.co.za/home)  
**ZARA**  
[www.zara.com/za/](http://www.zara.com/za/)

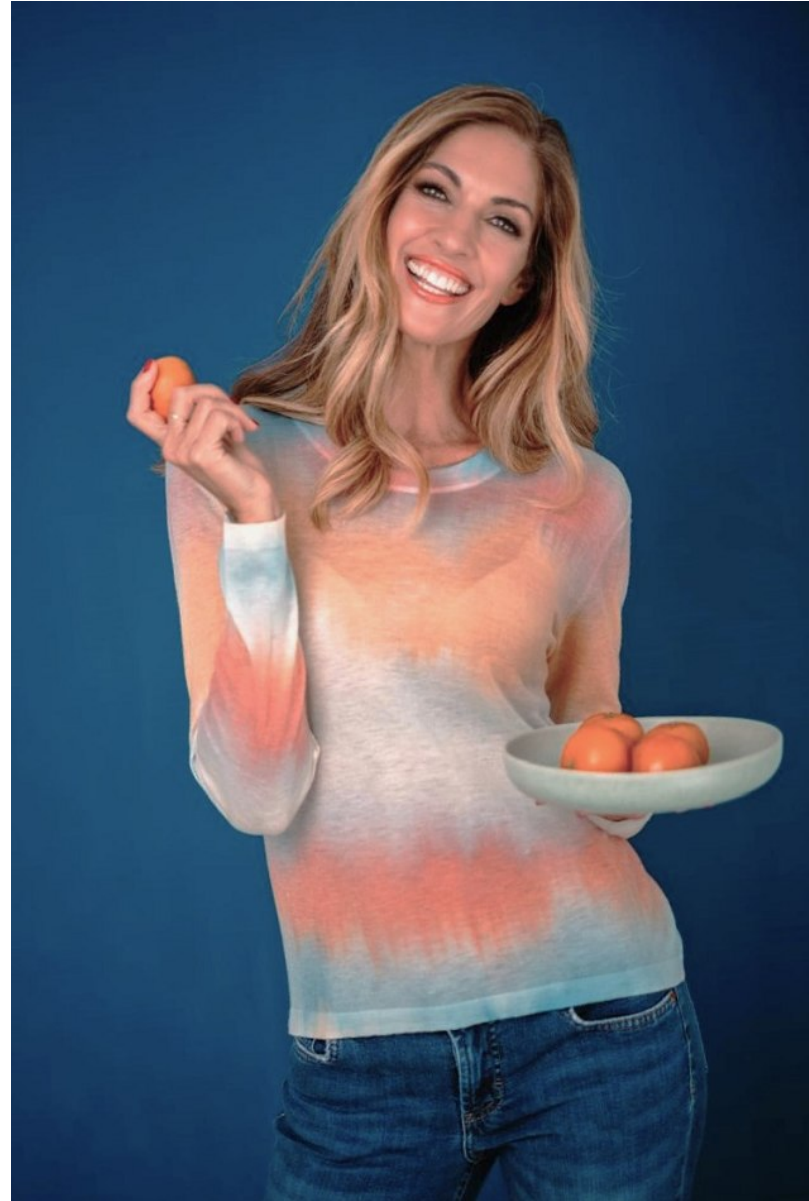
## ANITA OLCKERS

Height: 172cm Bust: 86cm Waist: 62cm Hips: 92cm Shoe: 5 UK Hair: Dark Blonde Eyes: Green



# W MANAGEMENT

*A Division Of Boss Models*



**ANITA OLCKERS**

Height: 172cm Bust: 86cm Waist: 62cm Hips: 92cm Shoe: 5 UK Hair: Dark Blonde Eyes: Green



# W MANAGEMENT

*A Division Of Boss Models*



**ANITA OLCKERS**

Height: 172cm Bust: 86cm Waist: 62cm Hips: 92cm Shoe: 5 UK Hair: Dark Blonde Eyes: Green



# W MANAGEMENT

*A Division Of Boss Models*



**ANITA OLCKERS**

Height: 172cm Bust: 86cm Waist: 62cm Hips: 92cm Shoe: 5 UK Hair: Dark Blonde Eyes: Green



# W MANAGEMENT

*A Division Of Boss Models*



## ANITA OLCKERS

Height: 172cm Bust: 86cm Waist: 62cm Hips: 92cm Shoe: 5 UK Hair: Dark Blonde Eyes: Green



# W MANAGEMENT

*A Division Of Boss Models*



## ANITA OLCKERS

Height: 172cm Bust: 86cm Waist: 62cm Hips: 92cm Shoe: 5 UK Hair: Dark Blonde Eyes: Green

# W MANAGEMENT

*A Division Of Boss Models*



## ANITA OLCKERS

Height: 172cm Bust: 86cm Waist: 62cm Hips: 92cm Shoe: 5 UK Hair: Dark Blonde Eyes: Green



# W MANAGEMENT

A Division Of Boss Models



## ANITA OLCKERS

Height: 172cm Bust: 86cm Waist: 62cm Hips: 92cm Shoe: 5 UK Hair: Dark Blonde Eyes: Green



# W MANAGEMENT

*A Division Of Boss Models*



**ANITA OLCKERS**

Height: 172cm Bust: 86cm Waist: 62cm Hips: 92cm Shoe: 5 UK Hair: Dark Blonde Eyes: Green



# W MANAGEMENT

*A Division Of Boss Models*



## ANITA OLCKERS

Height: 172cm Bust: 86cm Waist: 62cm Hips: 92cm Shoe: 5 UK Hair: Dark Blonde Eyes: Green



# W MANAGEMENT

A Division Of Boss Models



get the look

Who says short-sleeve knits aren't chic? Just choose one with glam detailing and layer over delicate fabrics and pants in a strong print.

Top: R470, Jo Borkett; Knit: R69.99, Mr Price; Pants: R350, Truworths; Necklace: R40, Foschini; Bag: R149.99, Mr Price; Bracelet: R220, Stuttafords.

Designer lookalike bag - only R150!

**tip** Try mixing tweed with delicate knits for a 'right now' look.

essentials 13

## ANITA OLCKERS

Height: 172cm Bust: 86cm Waist: 62cm Hips: 92cm Shoe: 5 UK Hair: Dark Blonde Eyes: Green



# W MANAGEMENT

*A Division Of Boss Models*



**ANITA OLCKERS**

Height: 172cm Bust: 86cm Waist: 62cm Hips: 92cm Shoe: 5 UK Hair: Dark Blonde Eyes: Green

# W MANAGEMENT

*A Division Of Boss Models*



ANITA OLCKERS

Height: 172cm Bust: 86cm Waist: 62cm Hips: 92cm Shoe: 5 UK Hair: Dark Blonde Eyes: Green



# W MANAGEMENT

*A Division Of Boss Models*



**ANITA OLCKERS**

Height: 172cm Bust: 86cm Waist: 62cm Hips: 92cm Shoe: 5 UK Hair: Dark Blonde Eyes: Green



# W MANAGEMENT

*A Division Of Boss Models*



## ANITA OLCKERS

Height: 172cm Bust: 86cm Waist: 62cm Hips: 92cm Shoe: 5 UK Hair: Dark Blonde Eyes: Green



# W MANAGEMENT

*A Division Of Boss Models*



## ANITA OLCKERS

Height: 172cm Bust: 86cm Waist: 62cm Hips: 92cm Shoe: 5 UK Hair: Dark Blonde Eyes: Green



# W MANAGEMENT

*A Division Of Boss Models*



**ANITA OLCKERS**

Height: 172cm Bust: 86cm Waist: 62cm Hips: 92cm Shoe: 5 UK Hair: Dark Blonde Eyes: Green



# W MANAGEMENT

*A Division Of Boss Models*



**ANITA OLCKERS**

Height: 172cm Bust: 86cm Waist: 62cm Hips: 92cm Shoe: 5 UK Hair: Dark Blonde Eyes: Green

# W MANAGEMENT

*A Division Of Boss Models*



**ANITA OLCKERS**

Height: 172cm Bust: 86cm Waist: 62cm Hips: 92cm Shoe: 5 UK Hair: Dark Blonde Eyes: Green



# W MANAGEMENT

*A Division Of Boss Models*



**ANITA OLCKERS**

Height: 172cm Bust: 86cm Waist: 62cm Hips: 92cm Shoe: 5 UK Hair: Dark Blonde Eyes: Green

# W MANAGEMENT

*A Division Of Boss Models*



**ANITA OLCKERS**

Height: 172cm Bust: 86cm Waist: 62cm Hips: 92cm Shoe: 5 UK Hair: Dark Blonde Eyes: Green