

W MANAGEMENT

A Division Of Boss Models

feel-good fashion



ANITA OLCKERS

Height: 172cm Bust: 86cm Waist: 62cm Hips: 92cm Shoe: 5 UK Hair: Dark Blonde Eyes: Green

W MANAGEMENT

A Division Of Boss Models



Shirt: R899, Zara;
skirt: R599 and belt
R99, both Faschin;
sunglasses
stylist's own

ANITA OLCKERS

Height: 172cm Bust: 86cm Waist: 62cm Hips: 92cm Shoe: 5 UK Hair: Dark Blonde Eyes: Green

W MANAGEMENT

A Division Of Boss Models



ANITA OLCKERS

Height: 172cm Bust: 86cm Waist: 62cm Hips: 92cm Shoe: 5 UK Hair: Dark Blonde Eyes: Green

W MANAGEMENT

A Division Of Boss Models



ANITA OLCKERS

Height: 172cm Bust: 86cm Waist: 62cm Hips: 92cm Shoe: 5 UK Hair: Dark Blonde Eyes: Green

W MANAGEMENT

A Division Of Boss Models



ANITA OLCKERS

Height: 172cm Bust: 86cm Waist: 62cm Hips: 92cm Shoe: 5 UK Hair: Dark Blonde Eyes: Green

W MANAGEMENT

A Division Of Boss Models



ANITA OLCKERS

Height: 172cm Bust: 86cm Waist: 62cm Hips: 92cm Shoe: 5 UK Hair: Dark Blonde Eyes: Green

W MANAGEMENT

A Division Of Boss Models



SEDUCE YOURSELF! WHEN CHOOSING BASICS, PRIORITISE COMFORT – TRY OLD-FASHIONED VESTS AND LONG JOHNS IN PRETTY, SNUG FABRICS LIKE STRETCH, COTTON, SOFT KNITS AND MESH. BY RETHA JÜRGENS, PHOTOGRAPHY JOHAN WILKE

A perfect fit

ANITA OLCKERS

Height: 172cm Bust: 86cm Waist: 62cm Hips: 92cm Shoe: 5 UK Hair: Dark Blonde Eyes: Green

W MANAGEMENT

A Division Of Boss Models

mode



ANITA OLCKERS

Height: 172cm Bust: 86cm Waist: 62cm Hips: 92cm Shoe: 5 UK Hair: Dark Blonde Eyes: Green

W MANAGEMENT

A Division Of Boss Models

HIERDIE BLADSY:
HEMP R399,
FOSCHINI
ROMP
R899, H&M
SKOENE R399,99,
THE FIX
OORBELLE
R250, LOVISA
GORDEL R299,
FOSCHINI
HANDSAK R699,
FOSCHINI
SONBRIL R1 640,
LUXOTTICA

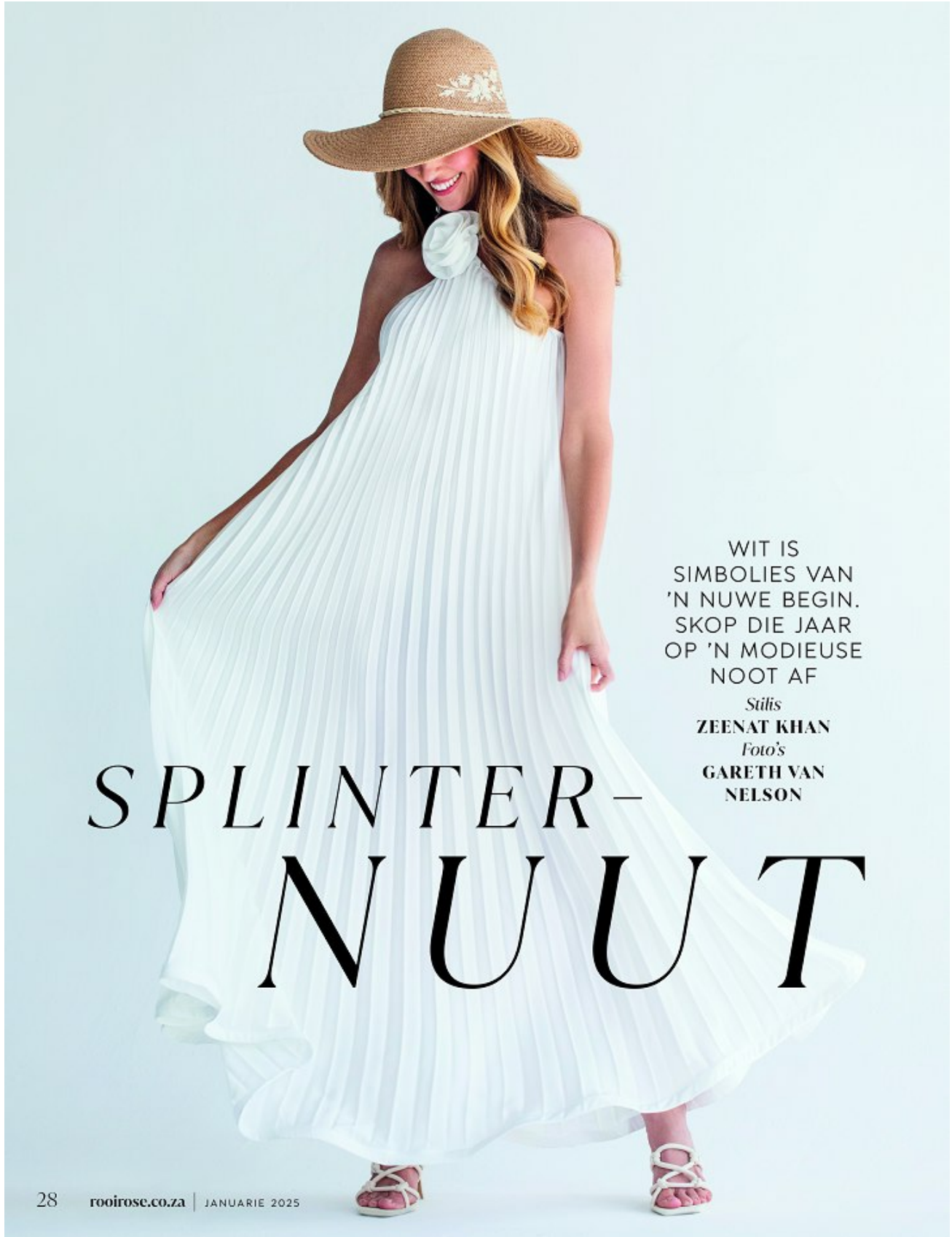
VORIGE BLADSY:
ONDERBAADJIE
R679, ZARA
BROEK R1 299,
FOREVER NEW
SKOENE R329,99
EDGARS
ARMBAND R290,
LOVISA
OORBELLE R300,
LOVISA



JANUARIE 2025 | rooirose.co.za 33

ANITA OLCKERS

Height: 172cm Bust: 86cm Waist: 62cm Hips: 92cm Shoe: 5 UK Hair: Dark Blonde Eyes: Green



WIT IS
SIMBOLIES VAN
'N NUWE BEGIN.
SKOP DIE JAAR
OP 'N MODIEUSE
NOOT AF

Stilis
ZEENAT KHAN
Foto's
**GARETH VAN
NELSON**

SPLINTER- NUUT

ANITA OLCKERS

Height: 172cm Bust: 86cm Waist: 62cm Hips: 92cm Shoe: 5 UK Hair: Dark Blonde Eyes: Green

W MANAGEMENT

A Division Of Boss Models

mode



STILIS
ZEENAT KHAN
STILISASSISTENT
ALEXANDRA BENJAMIN
FOTOS
GARETH VAN NELSON/
HABARIMEDIA/IMAGES
FOTOGRAAF-ASSISTENT
LAUREN FREDERICKS
HARE EN GRIMERING
NICOLA LOOTS
MODEL
ANITA OLCKERS/BOSS MODEL
MANAGEMENT

**VIND HIERDIE
ARTIKELS BY:**
EDGARS
[www.edgars.co.za/collections/
new-collection](http://www.edgars.co.za/collections/new-collection)
FOREVER NEW
[www.forevernew.co.za/
collections/new-in](http://www.forevernew.co.za/collections/new-in)
FOSCHINI
www.bash.com/foschini
H&M
www.HM.com
LOVISA
www.lovisajewellery.co.za
LUXOTTICA
www.essilorluxottica.com/en/
NICCI
www.nicci.co.za
POETRY
www.poetrystores.co.za/z/new
THE FIX
www.bash.com/the-fix/ladies
YDE
www.yde.co.za/home
ZARA
www.zara.com/za/

ANITA OLCKERS

Height: 172cm Bust: 86cm Waist: 62cm Hips: 92cm Shoe: 5 UK Hair: Dark Blonde Eyes: Green

W MANAGEMENT

A Division Of Boss Models



ANITA OLCKERS

Height: 172cm Bust: 86cm Waist: 62cm Hips: 92cm Shoe: 5 UK Hair: Dark Blonde Eyes: Green

W MANAGEMENT

A Division Of Boss Models



ANITA OLCKERS

Height: 172cm Bust: 86cm Waist: 62cm Hips: 92cm Shoe: 5 UK Hair: Dark Blonde Eyes: Green

W MANAGEMENT

A Division Of Boss Models



ANITA OLCKERS

Height: 172cm Bust: 86cm Waist: 62cm Hips: 92cm Shoe: 5 UK Hair: Dark Blonde Eyes: Green

W MANAGEMENT

A Division Of Boss Models



ANITA OLCKERS

Height: 172cm Bust: 86cm Waist: 62cm Hips: 92cm Shoe: 5 UK Hair: Dark Blonde Eyes: Green

W MANAGEMENT

A Division Of Boss Models



ANITA OLCKERS

Height: 172cm Bust: 86cm Waist: 62cm Hips: 92cm Shoe: 5 UK Hair: Dark Blonde Eyes: Green

W MANAGEMENT

A Division Of Boss Models



ANITA OLCKERS

Height: 172cm Bust: 86cm Waist: 62cm Hips: 92cm Shoe: 5 UK Hair: Dark Blonde Eyes: Green

W MANAGEMENT

A Division Of Boss Models



✦
Top R699 and **skirt**
R1 299, both Poetry,
shoes R499,
Foschini; **cap** R199,
Woolworths;
necklace R650,
Something Pretty

ANITA OLCKERS

Height: 172cm Bust: 86cm Waist: 62cm Hips: 92cm Shoe: 5 UK Hair: Dark Blonde Eyes: Green

W MANAGEMENT

A Division Of Boss Models



ANITA OLCKERS

Height: 172cm Bust: 86cm Waist: 62cm Hips: 92cm Shoe: 5 UK Hair: Dark Blonde Eyes: Green

W MANAGEMENT

A Division Of Boss Models



ANITA OLCKERS

Height: 172cm Bust: 86cm Waist: 62cm Hips: 92cm Shoe: 5 UK Hair: Dark Blonde Eyes: Green

W MANAGEMENT

A Division Of Boss Models



ANITA OLCKERS

Height: 172cm Bust: 86cm Waist: 62cm Hips: 92cm Shoe: 5 UK Hair: Dark Blonde Eyes: Green

W MANAGEMENT

A Division Of Boss Models



ANITA OLCKERS

Height: 172cm Bust: 86cm Waist: 62cm Hips: 92cm Shoe: 5 UK Hair: Dark Blonde Eyes: Green

W MANAGEMENT

A Division Of Boss Models



ANITA OLCKERS

Height: 172cm Bust: 86cm Waist: 62cm Hips: 92cm Shoe: 5 UK Hair: Dark Blonde Eyes: Green

W MANAGEMENT

A Division Of Boss Models



ANITA OLCKERS

Height: 172cm Bust: 86cm Waist: 62cm Hips: 92cm Shoe: 5 UK Hair: Dark Blonde Eyes: Green

fashion



AMY-LEE
STEENKAMP
Fashion Editor

Sunshine ready



Step outside with a fresh
and elevated look that's perfect
for warm, sunny days

October 2024 | W&H 33

ANITA OLCKERS

Height: 172cm Bust: 86cm Waist: 62cm Hips: 92cm Shoe: 5 UK Hair: Dark Blonde Eyes: Green

W MANAGEMENT

A Division Of Boss Models



ANITA OLCKERS

Height: 172cm Bust: 86cm Waist: 62cm Hips: 92cm Shoe: 5 UK Hair: Dark Blonde Eyes: Green

W MANAGEMENT

A Division Of Boss Models



ANITA OLCKERS

Height: 172cm Bust: 86cm Waist: 62cm Hips: 92cm Shoe: 5 UK Hair: Dark Blonde Eyes: Green

W MANAGEMENT

A Division Of Boss Models



ANITA OLCKERS

Height: 172cm Bust: 86cm Waist: 62cm Hips: 92cm Shoe: 5 UK Hair: Dark Blonde Eyes: Green

W MANAGEMENT

A Division Of Boss Models



ANITA OLCKERS

Height: 172cm Bust: 86cm Waist: 62cm Hips: 92cm Shoe: 5 UK Hair: Dark Blonde Eyes: Green

W MANAGEMENT

A Division Of Boss Models



ANITA OLCKERS

Height: 172cm Bust: 86cm Waist: 62cm Hips: 92cm Shoe: 5 UK Hair: Dark Blonde Eyes: Green

W MANAGEMENT

A Division Of Boss Models

get the look

Who says short-sleeve knits aren't chic? Just choose one with glam detailing and layer over delicate fabrics and pants in a strong print.

Top, R470, Jo Borkett. Knit, R89.99, Mr Price. Pants, R350, Truworths. Necklace, R40, Foschini. Bag, R149.99, Mr Price. Bracelet, R220, Stuttafords.

Designer lookalike bag - only R150!

tip Try mixing tweed with delicate knits for a 'right now' look.

essentials 13

ANITA OLCKERS

Height: 172cm Bust: 86cm Waist: 62cm Hips: 92cm Shoe: 5 UK Hair: Dark Blonde Eyes: Green

W MANAGEMENT

A Division Of Boss Models



ANITA OLCKERS

Height: 172cm Bust: 86cm Waist: 62cm Hips: 92cm Shoe: 5 UK Hair: Dark Blonde Eyes: Green

W MANAGEMENT

A Division Of Boss Models



ANITA OLCKERS

Height: 172cm Bust: 86cm Waist: 62cm Hips: 92cm Shoe: 5 UK Hair: Dark Blonde Eyes: Green

W MANAGEMENT

A Division Of Boss Models



ANITA OLCKERS

Height: 172cm Bust: 86cm Waist: 62cm Hips: 92cm Shoe: 5 UK Hair: Dark Blonde Eyes: Green

W MANAGEMENT

A Division Of Boss Models



ANITA OLCKERS

Height: 172cm Bust: 86cm Waist: 62cm Hips: 92cm Shoe: 5 UK Hair: Dark Blonde Eyes: Green

W MANAGEMENT

A Division Of Boss Models



ANITA OLCKERS

Height: 172cm Bust: 86cm Waist: 62cm Hips: 92cm Shoe: 5 UK Hair: Dark Blonde Eyes: Green

W MANAGEMENT

A Division Of Boss Models



ANITA OLCKERS

Height: 172cm Bust: 86cm Waist: 62cm Hips: 92cm Shoe: 5 UK Hair: Dark Blonde Eyes: Green

W MANAGEMENT

A Division Of Boss Models



ANITA OLCKERS

Height: 172cm Bust: 86cm Waist: 62cm Hips: 92cm Shoe: 5 UK Hair: Dark Blonde Eyes: Green

W MANAGEMENT

A Division Of Boss Models



ANITA OLCKERS

Height: 172cm Bust: 86cm Waist: 62cm Hips: 92cm Shoe: 5 UK Hair: Dark Blonde Eyes: Green

W MANAGEMENT

A Division Of Boss Models



ANITA OLCKERS

Height: 172cm Bust: 86cm Waist: 62cm Hips: 92cm Shoe: 5 UK Hair: Dark Blonde Eyes: Green

W MANAGEMENT

A Division Of Boss Models



ANITA OLCKERS

Height: 172cm Bust: 86cm Waist: 62cm Hips: 92cm Shoe: 5 UK Hair: Dark Blonde Eyes: Green

W MANAGEMENT

A Division Of Boss Models



ANITA OLCKERS

Height: 172cm Bust: 86cm Waist: 62cm Hips: 92cm Shoe: 5 UK Hair: Dark Blonde Eyes: Green

W MANAGEMENT

A Division Of Boss Models



ANITA OLCKERS

Height: 172cm Bust: 86cm Waist: 62cm Hips: 92cm Shoe: 5 UK Hair: Dark Blonde Eyes: Green

W MANAGEMENT

A Division Of Boss Models



ANITA OLCKERS

Height: 172cm Bust: 86cm Waist: 62cm Hips: 92cm Shoe: 5 UK Hair: Dark Blonde Eyes: Green

W MANAGEMENT

A Division Of Boss Models



ANITA OLCKERS

Height: 172cm Bust: 86cm Waist: 62cm Hips: 92cm Shoe: 5 UK Hair: Dark Blonde Eyes: Green

W MANAGEMENT

A Division Of Boss Models



ANITA OLCKERS

Height: 172cm Bust: 86cm Waist: 62cm Hips: 92cm Shoe: 5 UK Hair: Dark Blonde Eyes: Green

W MANAGEMENT

A Division Of Boss Models



ANITA OLCKERS

Height: 172cm Bust: 86cm Waist: 62cm Hips: 92cm Shoe: 5 UK Hair: Dark Blonde Eyes: Green

W MANAGEMENT

A Division Of Boss Models



ANITA OLCKERS

Height: 172cm Bust: 86cm Waist: 62cm Hips: 92cm Shoe: 5 UK Hair: Dark Blonde Eyes: Green