

W MANAGEMENT

A Division Of Boss Models



ANITA OLCKERS

Height: 172cm Bust: 86cm Waist: 62cm Hips: 92cm Shoe: 5 UK Hair: Dark Blonde Eyes: Green

W MANAGEMENT

A Division Of Boss Models

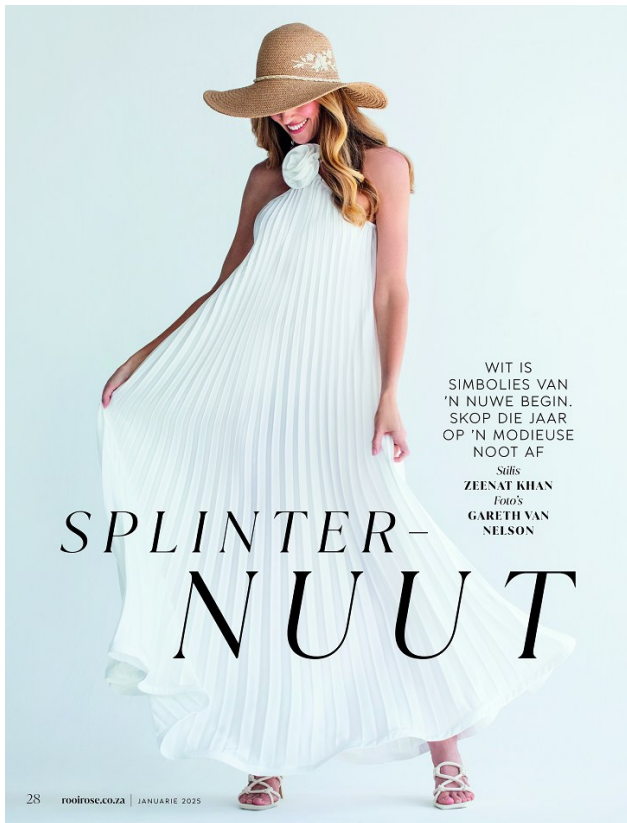


ANITA OLCKERS

Height: 172cm Bust: 86cm Waist: 62cm Hips: 92cm Shoe: 5 UK Hair: Dark Blonde Eyes: Green

W MANAGEMENT

A Division Of Boss Models

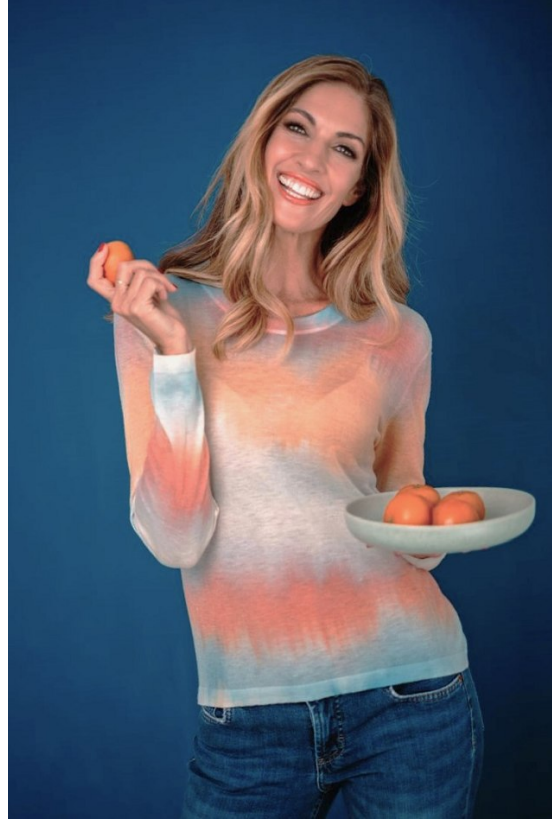


ANITA OLCKERS

Height: 172cm Bust: 86cm Waist: 62cm Hips: 92cm Shoe: 5 UK Hair: Dark Blonde Eyes: Green

W MANAGEMENT

A Division Of Boss Models



ANITA OLCKERS

Height: 172cm Bust: 86cm Waist: 62cm Hips: 92cm Shoe: 5 UK Hair: Dark Blonde Eyes: Green

W MANAGEMENT

A Division Of Boss Models



ANITA OLCKERS

Height: 172cm Bust: 86cm Waist: 62cm Hips: 92cm Shoe: 5 UK Hair: Dark Blonde Eyes: Green

W MANAGEMENT

A Division Of Boss Models



ANITA OLCKERS

Height: 172cm Bust: 86cm Waist: 62cm Hips: 92cm Shoe: 5 UK Hair: Dark Blonde Eyes: Green

W MANAGEMENT

A Division Of Boss Models



October 2024 | **WOM** 33

Fashion | **WOM** 33

2024/10/01 21:31



ANITA OLCKERS

Height: 172cm Bust: 86cm Waist: 62cm Hips: 92cm Shoe: 5 UK Hair: Dark Blonde Eyes: Green

W MANAGEMENT

A Division Of Boss Models



Who says short-sleeve knits aren't chic? Just choose one with glam detailing and layer over delicate fabrics and pants in a strong print.

Top: R170, all Bosses Kicks, R89-99. M Price Pants: R150, Roseville. Notebook: R140, Roseville. Bag: R149-99, M Price. Bracelet: R220, Sunstron.

get the look

Designer lookalike bag - only R150!

tip Try mixing tweed with delicate knits for a "right now" look.

essentials 13

ANITA OLCKERS

Height: 172cm Bust: 86cm Waist: 62cm Hips: 92cm Shoe: 5 UK Hair: Dark Blonde Eyes: Green

W MANAGEMENT

A Division Of Boss Models



ANITA OLCKERS

Height: 172cm Bust: 86cm Waist: 62cm Hips: 92cm Shoe: 5 UK Hair: Dark Blonde Eyes: Green

W MANAGEMENT

A Division Of Boss Models



ANITA OLCKERS

Height: 172cm Bust: 86cm Waist: 62cm Hips: 92cm Shoe: 5 UK Hair: Dark Blonde Eyes: Green

W MANAGEMENT

A Division Of Boss Models



ANITA OLCKERS

Height: 172cm Bust: 86cm Waist: 62cm Hips: 92cm Shoe: 5 UK Hair: Dark Blonde Eyes: Green

W MANAGEMENT

A Division Of Boss Models



ANITA OLCKERS

Height: 172cm Bust: 86cm Waist: 62cm Hips: 92cm Shoe: 5 UK Hair: Dark Blonde Eyes: Green

W MANAGEMENT

A Division Of Boss Models



ANITA OLCKERS

Height: 172cm Bust: 86cm Waist: 62cm Hips: 92cm Shoe: 5 UK Hair: Dark Blonde Eyes: Green