

W MANAGEMENT

A Division Of Boss Models



MERLE WILLMORE

Height: 175cm Bust: 96cm Waist: 77cm Hips: 97cm Shoe: 7 UK Hair: Salt and Pepper Eyes: Green

W MANAGEMENT

A Division Of Boss Models

HG MODE



WENK
STEWELPYJEANS
Dié soort jeans is baie
vleiend vir 'n driehoek-
liggaamstipe. Dit skep
vorm en die lengte is
perfek.

Hemp R350, Woolworths,
Stewelpypjeans R399,
Foschini, Baadjie R1 299,
Queenspark, Hakskoene
R359 en halssnoerstel
R139, Miladys, Handsak
R450, Foschini.

(Blaai om)

huisgenoot.com 18 APRIL 2019 | 35

MERLE WILLMORE

Height: 175cm Bust: 96cm Waist: 77cm Hips: 97cm Shoe: 7 UK Hair: Salt and Pepper Eyes: Green

W MANAGEMENT

A Division Of Boss Models



MERLE WILLMORE

Height: 175cm Bust: 96cm Waist: 77cm Hips: 97cm Shoe: 7 UK Hair: Salt and Pepper Eyes: Green

W MANAGEMENT

A Division Of Boss Models

MERLE WORSLEY WILLMORE (68)

KUNSTENAAR EN LEWENSAFRIGTER



ASSISTENT: ABBY-GENE BISSOLATI, MODELLE: ABBY-GENE BISSOLATI, JOANIE BERGH, VANESSA BAILEY, MERLE WORSLEY, GRIMEERKUNSTENAR: SHANMAZ ALEXANDER

WENK KORT KÊREL- JEANS

As jy, soos Merle, 'n onderste bodriehoekvorm het, kan kêreljeans help om jou verhoudings te balanseer omdat dit lossen om jou heupe sit.

Top R229, Makro. Kort kêreljeans R550, Woolworths. Trui R339 en halssnoer R99, Miladys. Plat skoene R150 en skouersak R450, Foschini.

MERLE WILLMORE

Height: 175cm Bust: 96cm Waist: 77cm Hips: 97cm Shoe: 7 UK Hair: Salt and Pepper Eyes: Green

W MANAGEMENT

A Division Of Boss Models



MERLE WILLMORE

Height: 175cm Bust: 96cm Waist: 77cm Hips: 97cm Shoe: 7 UK Hair: Salt and Pepper Eyes: Green

W MANAGEMENT

A Division Of Boss Models



MERLE WILLMORE

Height: 175cm Bust: 96cm Waist: 77cm Hips: 97cm Shoe: 7 UK Hair: Salt and Pepper Eyes: Green

W MANAGEMENT

A Division Of Boss Models



MERLE WILLMORE

Height: 175cm Bust: 96cm Waist: 77cm Hips: 97cm Shoe: 7 UK Hair: Salt and Pepper Eyes: Green

W MANAGEMENT

A Division Of Boss Models



MERLE WILLMORE

Height: 175cm Bust: 96cm Waist: 77cm Hips: 97cm Shoe: 7 UK Hair: Salt and Pepper Eyes: Green

W MANAGEMENT

A Division Of Boss Models



MERLE WILLMORE

Height: 175cm Bust: 96cm Waist: 77cm Hips: 97cm Shoe: 7 UK Hair: Salt and Pepper Eyes: Green

W MANAGEMENT

A Division Of Boss Models



MERLE WILLMORE

Height: 175cm Bust: 96cm Waist: 77cm Hips: 97cm Shoe: 7 UK Hair: Salt and Pepper Eyes: Green

W MANAGEMENT

A Division Of Boss Models



MERLE WILLMORE

Height: 175cm Bust: 96cm Waist: 77cm Hips: 97cm Shoe: 7 UK Hair: Salt and Pepper Eyes: Green

W MANAGEMENT

A Division Of Boss Models



MERLE WILLMORE

Height: 175cm Bust: 96cm Waist: 77cm Hips: 97cm Shoe: 7 UK Hair: Salt and Pepper Eyes: Green

W MANAGEMENT

A Division Of Boss Models



MERLE WILLMORE

Height: 175cm Bust: 96cm Waist: 77cm Hips: 97cm Shoe: 7 UK Hair: Salt and Pepper Eyes: Green

W MANAGEMENT

A Division Of Boss Models



MERLE WILLMORE

Height: 175cm Bust: 96cm Waist: 77cm Hips: 97cm Shoe: 7 UK Hair: Salt and Pepper Eyes: Green

W MANAGEMENT

A Division Of Boss Models



MERLE WILLMORE

Height: 175cm Bust: 96cm Waist: 77cm Hips: 97cm Shoe: 7 UK Hair: Salt and Pepper Eyes: Green

W MANAGEMENT

A Division Of Boss Models

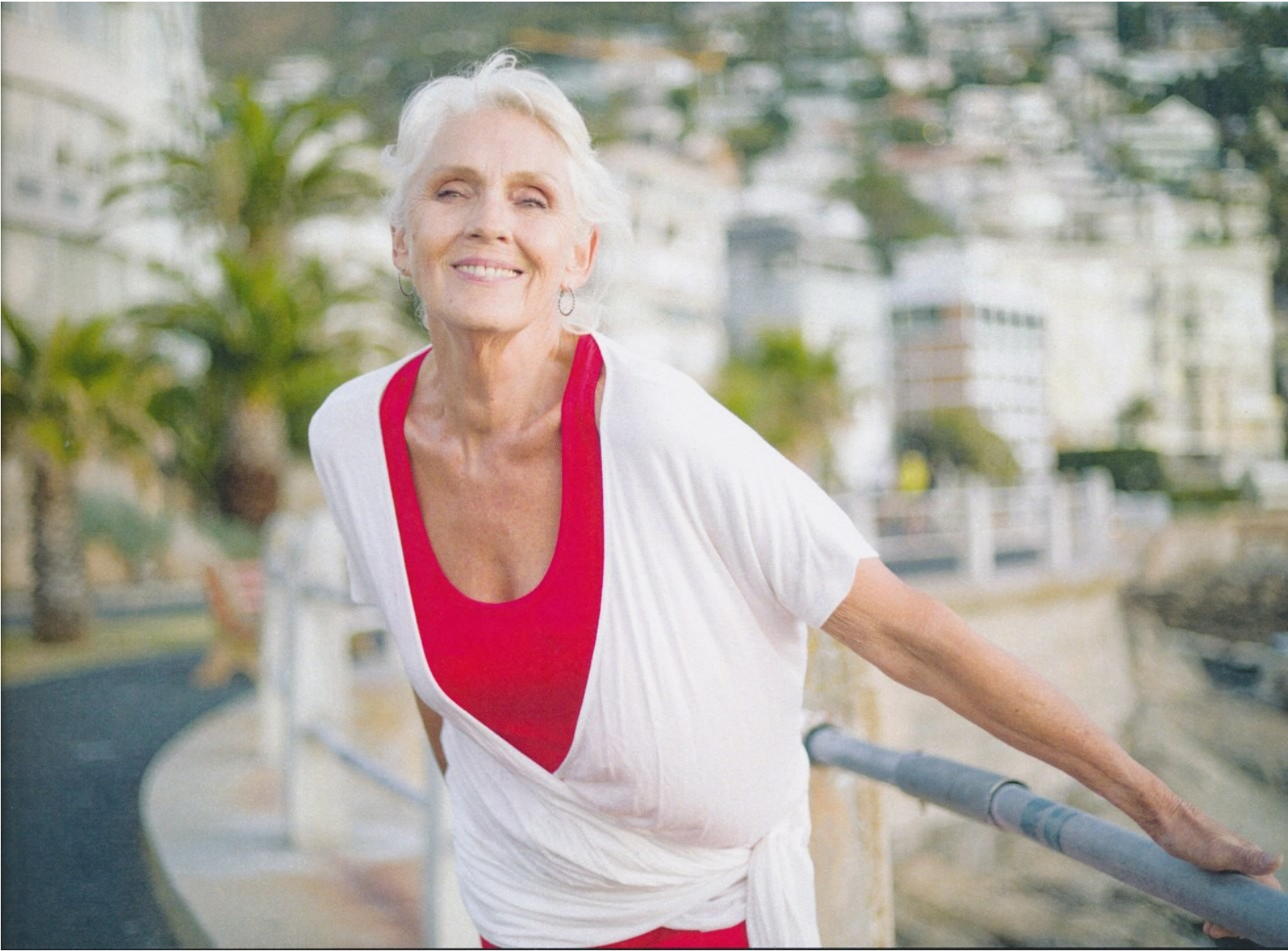


MERLE WILLMORE

Height: 175cm Bust: 96cm Waist: 77cm Hips: 97cm Shoe: 7 UK Hair: Salt and Pepper Eyes: Green

W MANAGEMENT

A Division Of Boss Models



MERLE WILLMORE

Height: 175cm Bust: 96cm Waist: 77cm Hips: 97cm Shoe: 7 UK Hair: Salt and Pepper Eyes: Green

W MANAGEMENT

A Division Of Boss Models



MERLE WILLMORE

Height: 175cm Bust: 96cm Waist: 77cm Hips: 97cm Shoe: 7 UK Hair: Salt and Pepper Eyes: Green

W MANAGEMENT

A Division Of Boss Models



MERLE WILLMORE

Height: 175cm Bust: 96cm Waist: 77cm Hips: 97cm Shoe: 7 UK Hair: Salt and Pepper Eyes: Green