

# W MANAGEMENT

*A Division Of Boss Models*



**NATALIE KRUG**

Height: 176cm Bust: 88cm Waist: 66cm Hips: 89cm Shoe: 7 UK Hair: Dark Brown Eyes: Blue



# W MANAGEMENT

*A Division Of Boss Models*



**NATALIE KRUG**

Height: 176cm Bust: 88cm Waist: 66cm Hips: 89cm Shoe: 7 UK Hair: Dark Brown Eyes: Blue

# W MANAGEMENT

*A Division Of Boss Models*



**NATALIE KRUG**

Height: 176cm Bust: 88cm Waist: 66cm Hips: 89cm Shoe: 7 UK Hair: Dark Brown Eyes: Blue



# W MANAGEMENT

*A Division Of Boss Models*



**NATALIE KRUG**

Height: 176cm Bust: 88cm Waist: 66cm Hips: 89cm Shoe: 7 UK Hair: Dark Brown Eyes: Blue

# W MANAGEMENT

*A Division Of Boss Models*



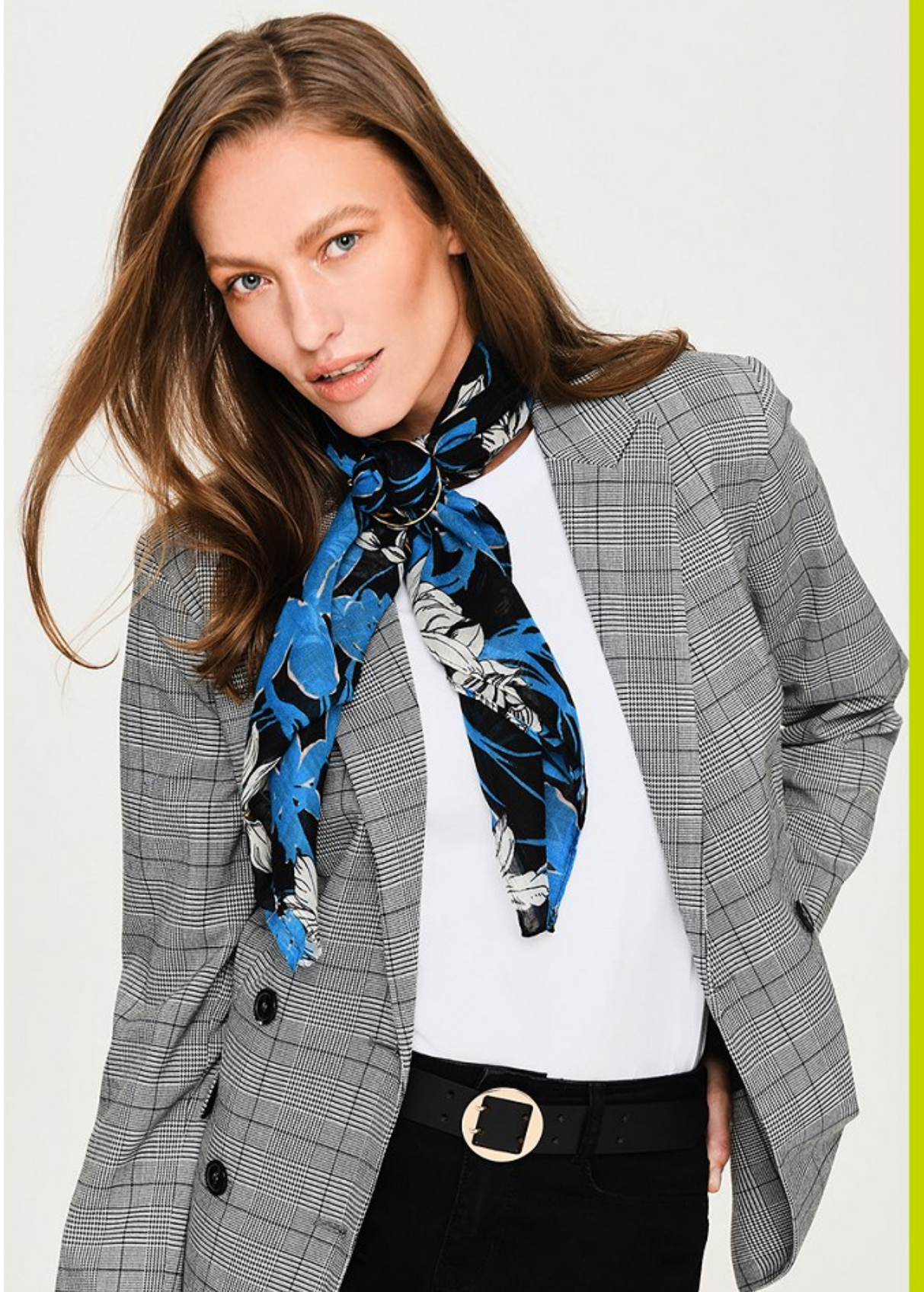
**NATALIE KRUG**

Height: 176cm Bust: 88cm Waist: 66cm Hips: 89cm Shoe: 7 UK Hair: Dark Brown Eyes: Blue



# W MANAGEMENT

*A Division Of Boss Models*



**NATALIE KRUG**

Height: 176cm Bust: 88cm Waist: 66cm Hips: 89cm Shoe: 7 UK Hair: Dark Brown Eyes: Blue

# W MANAGEMENT

*A Division Of Boss Models*



**NATALIE KRUG**

Height: 176cm Bust: 88cm Waist: 66cm Hips: 89cm Shoe: 7 UK Hair: Dark Brown Eyes: Blue



# W MANAGEMENT

*A Division Of Boss Models*



**NATALIE KRUG**

Height: 176cm Bust: 88cm Waist: 66cm Hips: 89cm Shoe: 7 UK Hair: Dark Brown Eyes: Blue



# W MANAGEMENT

*A Division Of Boss Models*



**NATALIE KRUG**

Height: 176cm Bust: 88cm Waist: 66cm Hips: 89cm Shoe: 7 UK Hair: Dark Brown Eyes: Blue

# W MANAGEMENT

*A Division Of Boss Models*



**NATALIE KRUG**

Height: 176cm Bust: 88cm Waist: 66cm Hips: 89cm Shoe: 7 UK Hair: Dark Brown Eyes: Blue



# W MANAGEMENT

*A Division Of Boss Models*



**NATALIE KRUG**

Height: 176cm Bust: 88cm Waist: 66cm Hips: 89cm Shoe: 7 UK Hair: Dark Brown Eyes: Blue

# W MANAGEMENT

*A Division Of Boss Models*



## NATALIE KRUG

Height: 176cm Bust: 88cm Waist: 66cm Hips: 89cm Shoe: 7 UK Hair: Dark Brown Eyes: Blue



# W MANAGEMENT

*A Division Of Boss Models*



THIS PAGE Jacket by  
Suzann Heyns R2 110  
Merchants on Long  
top R345, Women's  
Necklace R1 068,71  
Merchants on Long  
OPPOSITE PAGE:  
Sunglasses by Tom  
Ford R3 500, Extreme  
Eyewear, Copper do  
leaf earrings by Ida  
R980, Olivegreenca  
com, Scarf R2 280,  
Hat by Madine R200  
Merchants on Long  
by Lara Bohinc, R4  
iracema boutique.

70

## NATALIE KRUG

Height: 176cm Bust: 88cm Waist: 66cm Hips: 89cm Shoe: 7 UK Hair: Dark Brown Eyes: Blue



# W MANAGEMENT

*A Division Of Boss Models*



**NATALIE KRUG**

Height: 176cm Bust: 88cm Waist: 66cm Hips: 89cm Shoe: 7 UK Hair: Dark Brown Eyes: Blue



# W MANAGEMENT

*A Division Of Boss Models*



**NATALIE KRUG**

Height: 176cm Bust: 88cm Waist: 66cm Hips: 89cm Shoe: 7 UK Hair: Dark Brown Eyes: Blue

# W MANAGEMENT

*A Division Of Boss Models*



**NATALIE KRUG**

Height: 176cm Bust: 88cm Waist: 66cm Hips: 89cm Shoe: 7 UK Hair: Dark Brown Eyes: Blue



# W MANAGEMENT

*A Division Of Boss Models*



**NATALIE KRUG**

Height: 176cm Bust: 88cm Waist: 66cm Hips: 89cm Shoe: 7 UK Hair: Dark Brown Eyes: Blue

# W MANAGEMENT

*A Division Of Boss Models*



NATALIE KRUG

Height: 176cm Bust: 88cm Waist: 66cm Hips: 89cm Shoe: 7 UK Hair: Dark Brown Eyes: Blue



# W MANAGEMENT

*A Division Of Boss Models*



THIS PAGE: Playsuit by Suzaan Heyne R1 647, Merchants on Long. Ring by Ti Santo R1 695, S Bacher. Ivory bracelet by Sitou R6 484.32, olivegreencat.com. Silver earrings by Philippe Green R1 300, olivegreencat.com. Glasses by Tom Ford R3190, Extreme Eyewear. Shoes R2 200, Alessia. OPPOSITE PAGE: Hat by Madwa R204.70, Merchants on Long. Carre Monogram Map Casaca Scarf R3 050, Louis Vuitton. Swimsuit, price on request, Gavin Rajah. 18-carat gold necklace R89 000, 18-carat gold woven cuff R64 000, both Alon Shina. Beaded trisy cuff by Fiona Paxton R1 645, Shop-label.com. Rose-gold bracelet by Lara Bohinc, R1 665, Iracema boutique.

64

## NATALIE KRUG

Height: 176cm Bust: 88cm Waist: 66cm Hips: 89cm Shoe: 7 UK Hair: Dark Brown Eyes: Blue



# W MANAGEMENT

*A Division Of Boss Models*



Hat R695, Damirice H  
Swimsuit R2 550, Paul S  
Detaila cream and brown ear  
R960, Inacema boutique  
by Philippa Green R2  
olivegreencat.com. Ring b  
R8 000, olivegreencat

62

## NATALIE KRUG

Height: 176cm Bust: 88cm Waist: 66cm Hips: 89cm Shoe: 7 UK Hair: Dark Brown Eyes: Blue



# W MANAGEMENT

*A Division Of Boss Models*



**NATALIE KRUG**

Height: 176cm Bust: 88cm Waist: 66cm Hips: 89cm Shoe: 7 UK Hair: Dark Brown Eyes: Blue



# W MANAGEMENT

*A Division Of Boss Models*



NATALIE KRUG

Height: 176cm Bust: 88cm Waist: 66cm Hips: 89cm Shoe: 7 UK Hair: Dark Brown Eyes: Blue



# W MANAGEMENT

*A Division Of Boss Models*



**NATALIE KRUG**

Height: 176cm Bust: 88cm Waist: 66cm Hips: 89cm Shoe: 7 UK Hair: Dark Brown Eyes: Blue

# W MANAGEMENT

*A Division Of Boss Models*



## NATALIE KRUG

Height: 176cm Bust: 88cm Waist: 66cm Hips: 89cm Shoe: 7 UK Hair: Dark Brown Eyes: Blue



# W MANAGEMENT

*A Division Of Boss Models*

mode



**Eleganz,  
hübsch spielerisch**

34 freudin

**NATALIE KRUG**

Height: 176cm Bust: 88cm Waist: 66cm Hips: 89cm Shoe: 7 UK Hair: Dark Brown Eyes: Blue

# W MANAGEMENT

*A Division Of Boss Models*

**THIS PAGE:** Bikini top, \$58, and bottom, \$52, both by Ralph Lauren Blue Label; sunglasses by Mosley Tribes, \$220.  
**OPPOSITE:** Shirt by Polo by Ralph Lauren, \$75; sweater by Thomas Pink, \$195; jacket by L.L. Bean, \$30; pants by Lacoste, \$135; watch by Oceanus, \$900.



**NATALIE KRUG**

Height: 176cm Bust: 88cm Waist: 66cm Hips: 89cm Shoe: 7 UK Hair: Dark Brown Eyes: Blue



# W MANAGEMENT

*A Division Of Boss Models*



**NATALIE KRUG**

Height: 176cm Bust: 88cm Waist: 66cm Hips: 89cm Shoe: 7 UK Hair: Dark Brown Eyes: Blue



# W MANAGEMENT

*A Division Of Boss Models*



**NATALIE KRUG**

Height: 176cm Bust: 88cm Waist: 66cm Hips: 89cm Shoe: 7 UK Hair: Dark Brown Eyes: Blue



# W MANAGEMENT

*A Division Of Boss Models*



LEATHER COAT, £195.  
COTTON BLOUSE, £30.  
DENIM JEANS, £35.  
METALLIC BELT, £12.  
METAL CUFF, £20.  
METAL RING, £12.50.  
LEATHER BAG, £35.  
PATENT SHOES, £50.

wallis  
WALLIS.CO.UK

## NATALIE KRUG

Height: 176cm Bust: 88cm Waist: 66cm Hips: 89cm Shoe: 7 UK Hair: Dark Brown Eyes: Blue

# W MANAGEMENT

*A Division Of Boss Models*



**NATALIE KRUG**

Height: 176cm Bust: 88cm Waist: 66cm Hips: 89cm Shoe: 7 UK Hair: Dark Brown Eyes: Blue



# W MANAGEMENT

*A Division Of Boss Models*



**NATALIE KRUG**

Height: 176cm Bust: 88cm Waist: 66cm Hips: 89cm Shoe: 7 UK Hair: Dark Brown Eyes: Blue

# W MANAGEMENT

*A Division Of Boss Models*

WOOL CAPE,  
E85. POLO NECK  
SWEATER, E18.  
FLANNEL  
TROUSERS, E40.  
LEATHER BELT,  
E15. BEAD AND  
LEATHER  
NECKLACE, E15.  
FAUX LEATHER  
BAG, E15.  
SHOES, E50



wall  
WALLIS.CO.UK

## NATALIE KRUG

Height: 176cm Bust: 88cm Waist: 66cm Hips: 89cm Shoe: 7 UK Hair: Dark Brown Eyes: Blue



# W MANAGEMENT

*A Division Of Boss Models*

*V - fashion*



Lola dress by Coppelia, Mungo & Jemima  
Woollen poncho by Burberry  
Faux fur jacket by Forever New  
Boots by Call It Spring  
Cuffs by Mára Collection  
Earrings by Waif, Mungo & Jemima

50 *val de vic*

**NATALIE KRUG**

Height: 176cm Bust: 88cm Waist: 66cm Hips: 89cm Shoe: 7 UK Hair: Dark Brown Eyes: Blue

# W MANAGEMENT

*A Division Of Boss Models*



NATALIE KRUG

Height: 176cm Bust: 88cm Waist: 66cm Hips: 89cm Shoe: 7 UK Hair: Dark Brown Eyes: Blue



# W MANAGEMENT

*A Division Of Boss Models*



**NATALIE KRUG**

Height: 176cm Bust: 88cm Waist: 66cm Hips: 89cm Shoe: 7 UK Hair: Dark Brown Eyes: Blue

# W MANAGEMENT

*A Division Of Boss Models*



**NATALIE KRUG**

Height: 176cm Bust: 88cm Waist: 66cm Hips: 89cm Shoe: 7 UK Hair: Dark Brown Eyes: Blue



# W MANAGEMENT

*A Division Of Boss Models*

*V - fashion*

*V - fashion*

There is pleasure in the pathless woods, there is rapture in  
the lonely shore, there is society where none intrudes,  
by the deep sea, and music in its roar;  
I love not Man the less, but Nature more.

*Lord Byron*

Dress by MarethColleen  
Camel Cape by MarethColleen  
Earrings by Waif, Mungo & Jemima

56 *val de vie*

*val de vie* 57

## NATALIE KRUG

Height: 176cm Bust: 88cm Waist: 66cm Hips: 89cm Shoe: 7 UK Hair: Dark Brown Eyes: Blue

# W MANAGEMENT

*A Division Of Boss Models*



**NATALIE KRUG**

Height: 176cm Bust: 88cm Waist: 66cm Hips: 89cm Shoe: 7 UK Hair: Dark Brown Eyes: Blue



# W MANAGEMENT

*A Division Of Boss Models*

*V - fashion*

---

Dress by Non-European  
Navy coat by Lo  
Earrings by Waif, Mungo & Jemima



54 *val de vie*

**NATALIE KRUG**

Height: 176cm Bust: 88cm Waist: 66cm Hips: 89cm Shoe: 7 UK Hair: Dark Brown Eyes: Blue



# W MANAGEMENT

*A Division Of Boss Models*

*V - fashion*

Photography Kope | Figgins  
Hair and Makeup Laura Kingma  
Styling and Art Direction Janette Griesel  
Model Natalie Krug  
Hawk Buddy from Eagle Encounters

Hooded jacket by Non-European  
Faux fur waistcoat by Casual  
Dress by C(inch), Spree

## NATALIE KRUG

Height: 176cm Bust: 88cm Waist: 66cm Hips: 89cm Shoe: 7 UK Hair: Dark Brown Eyes: Blue



# W MANAGEMENT

*A Division Of Boss Models*

2013 PICA LEISURE AND LIFESTYLE AWARDS WINNER FOR PUBLISHING EXCELLENCE

# PRIVATE EDITION

IT'S NOT WHAT YOU KNOW

ISSUE 36 VOICES AND VISIONS

## SMART CITIES

MAURITIUS BEYOND  
REEF AND BALM

## ROCHAT'S TEST

DIVING WITH APEX  
PREDATORS

## FAST FORWARD

TO BUY, TO DRINK,  
TO SAVE IN 2035

## HOT PROPERTY

LIVE, PLAY, LOVE THE  
WESTERN CAPE LIFE

## NATALIE KRUG

Height: 176cm Bust: 88cm Waist: 66cm Hips: 89cm Shoe: 7 UK Hair: Dark Brown Eyes: Blue



# W MANAGEMENT

*A Division Of Boss Models*



'THE FINEST  
CLOTHING MADE IS  
A PERSON'S SKIN,  
BUT, OF COURSE,  
SOCIETY DEMANDS  
SOMETHING MORE  
THAN THIS'  
- MARK TWAIN

65

## NATALIE KRUG

Height: 176cm Bust: 88cm Waist: 66cm Hips: 89cm Shoe: 7 UK Hair: Dark Brown Eyes: Blue



# W MANAGEMENT

*A Division Of Boss Models*



**NATALIE KRUG**

Height: 176cm Bust: 88cm Waist: 66cm Hips: 89cm Shoe: 7 UK Hair: Dark Brown Eyes: Blue



# W MANAGEMENT

*A Division Of Boss Models*



**NATALIE KRUG**

Height: 176cm Bust: 88cm Waist: 66cm Hips: 89cm Shoe: 7 UK Hair: Dark Brown Eyes: Blue