

# W MANAGEMENT

*A Division Of Boss Models*



FARRYN WUEST

Height: 174cm Bust: 86cm Waist: 63cm Hips: 90cm Shoe: 6 UK Hair: Blonde Eyes: Blue/Green

# W MANAGEMENT

*A Division Of Boss Models*



## *Daring duo*

Printed co-ords will work hard in your wardrobe. Make a statement and wear them on the top and bottom, or mix and match with basics for a more low-key look. This jacket and ankle-grazer combo can be dressed down with box-fresh trainers for weekends, and dressed up with heels for your nine-to-five.

Blazer, R8 795; pants, R4 750, both 38 to 46, Paul Smith.  
T-shirt, R329, S to L, Levi's.  
Earrings, R80, Colette by Colette  
Hayman. Ring, R149, Aldo

## FARRYN WUEST

Height: 174cm Bust: 86cm Waist: 63cm Hips: 90cm Shoe: 6 UK Hair: Blonde Eyes: Blue/Green

# W MANAGEMENT

*A Division Of Boss Models*



## The perfect PRINT

It's official! Prints are big news for S/S 2019. Whether they're pared down or big and bold, there's something for every occasion...

style inspiration



### *Pretty patchwork*

A mixed-print dress will help you master the chaos of clashing patterns without even trying. This showstopper needs minimal styling, so keep your accessories simple.  
Dress, R799, 34 to 42, H&M. Earrings, R160, Colette by Colette Hayman. Black-bead necklace, R175, Poetry. Gold layered necklace, R460, Jangl. Cuff, R160, Naledi at Woolworths. Heels, R199, Mr Price >>

woman&home | IT'S ALL ABOUT YOU! 23

## FARRYN WUEST

Height: 174cm Bust: 86cm Waist: 63cm Hips: 90cm Shoe: 6 UK Hair: Blonde Eyes: Blue/Green

# W MANAGEMENT

A Division Of Boss Models

style inspiration



## Sporting great

Look effortlessly elegant with a head-to-toe large-scale print. This cool navy matching set is perfect for any event, and the loose fit means extra comfort. Embrace the sports vibe and finish with sneakers. Blouse, R699; pants, R699, both 6 to 18, Poetry. Earrings, R220, Colette by Colette Hayman. Rings, from R290 each, both Jangi. Bag, R5 995, Michael Kors w&h

The w&h fashion team shot on location at Melrose Arch ([melrosearch.co.za](http://melrosearch.co.za)), Café Rio and Rodizio Grill and Tapas (011 483 1910).

STYLIST TAMARA NADDO PHOTOGRAPHS GABRIEL BARCOLOMAY HAIR AND MAKE UP DANICAJ THOMAS MODEL FARRYN WUEST AT BOSS MODELS PT FOR WHERE TO BUY SEE STYLISTS PAGE AT WOMAN&HOMEMAGAZINE

style inspiration



## The clash

Sometimes it's good to throw caution to the wind and shimmy yourself into a multicoloured number for extra oomph. Striking florals with a contrasting baby-blue background give this dress a spring vibe, while the wrap detail takes it back to a vintage feel. Pair with block colours to avoid looking too busy. Dress, R219, 30 to 44, Mr Price. Necklace, R270; earrings, R160, both Colette by Colette Hayman. Clutch, R3 259, Michael Kors. Heels, R1 599, Poetry >>

## FARRYN WUEST

Height: 174cm Bust: 86cm Waist: 63cm Hips: 90cm Shoe: 6 UK Hair: Blonde Eyes: Blue/Green

# W MANAGEMENT

A Division Of Boss Models



## Prints charming

A slogan sweater adds a playful touch and, when teamed with a printed midi skirt, will see you through the seasons. For extra waist definition, half-tuck the jumper into the skirt's waistband and finish off with laid-back kicks for a fashion-forward look.

Sweater, R329, XS to XL, H&M.  
Skirt, R999, 4 to 16, Witchery.  
Earrings, R120, Colette by Colette Hayman. Necklace, R120 with a pair of earrings, Queenspark.  
Rings, R199, for set of four, Aldo.  
Sneakers, R699, Call It Spring >>

style inspiration



## White out

Ankle boots will give a floaty frock a modern edge – for a fresh twist for spring, choose a white pair. The pleated skirt and just-above-the-ankle length adds a flattering and feminine finish.

Left: Dress, R1 999, one size, Mel. Earrings, R200, Colette by Colette Hayman. Necklace, R430, Savage Jewellery. Bangle, R120, Queenspark. Yellow-gold ring, R195, Jangl. Rose-gold rings, R199 for set of four; boots, R1 999, both Aldo

## Shape-shifter

The classic shirt has been given a cool, contemporary update with the injection of bold picture prints. Make it the main event and keep the rest of your look simple, teaming it with sleek tailored trousers and colour-contrasting heels for a look that can take you straight from work to a meal out.

This page: Shirt, R5 895, 38 to 48, Paul Smith. Pants, R899, 4 to 16, Forever New. Earrings, R179, Curativ. Rings, from R170 each, all Jangl. Heels, R499, Woolworths >>

woman&home IT'S ALL ABOUT YOU! 19

## FARRYN WUEST

Height: 174cm Bust: 86cm Waist: 63cm Hips: 90cm Shoe: 6 UK Hair: Blonde Eyes: Blue/Green

# W MANAGEMENT

*A Division Of Boss Models*



**FARRYN WUEST**

Height: 174cm Bust: 86cm Waist: 63cm Hips: 90cm Shoe: 6 UK Hair: Blonde Eyes: Blue/Green

# W MANAGEMENT

*A Division Of Boss Models*



**FARRYN WUEST**

Height: 174cm Bust: 86cm Waist: 63cm Hips: 90cm Shoe: 6 UK Hair: Blonde Eyes: Blue/Green

# W MANAGEMENT

*A Division Of Boss Models*



**FARRYN WUEST**

Height: 174cm Bust: 86cm Waist: 63cm Hips: 90cm Shoe: 6 UK Hair: Blonde Eyes: Blue/Green



# W MANAGEMENT

*A Division Of Boss Models*



FARRYN WUEST

Height: 174cm Bust: 86cm Waist: 63cm Hips: 90cm Shoe: 6 UK Hair: Blonde Eyes: Blue/Green

# W MANAGEMENT

*A Division Of Boss Models*



FARRYN WUEST

Height: 174cm Bust: 86cm Waist: 63cm Hips: 90cm Shoe: 6 UK Hair: Blonde Eyes: Blue/Green

# W MANAGEMENT

*A Division Of Boss Models*

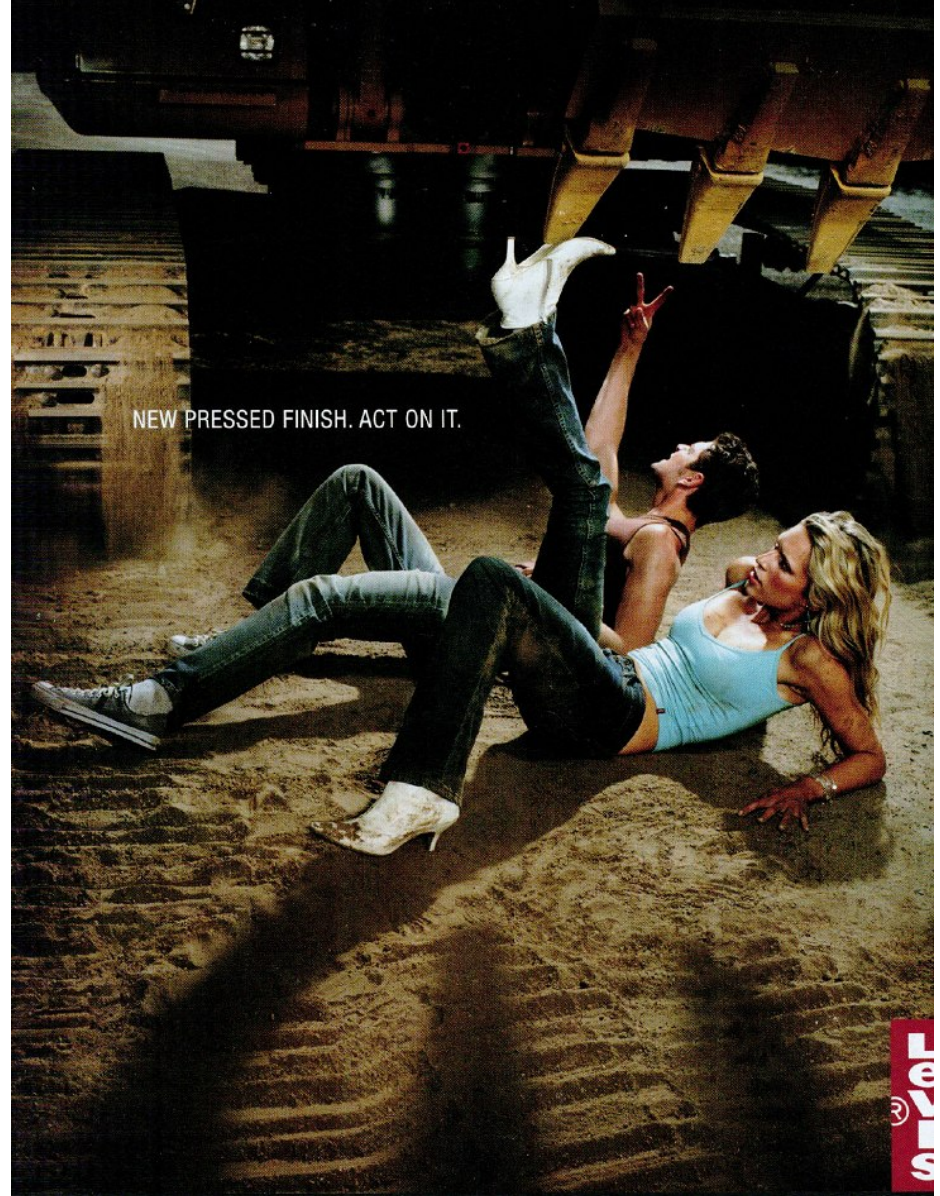


FARRYN WUEST

Height: 174cm Bust: 86cm Waist: 63cm Hips: 90cm Shoe: 6 UK Hair: Blonde Eyes: Blue/Green

# W MANAGEMENT

*A Division Of Boss Models*



## FARRYN WUEST

Height: 174cm Bust: 86cm Waist: 63cm Hips: 90cm Shoe: 6 UK Hair: Blonde Eyes: Blue/Green

# W MANAGEMENT

*A Division Of Boss Models*

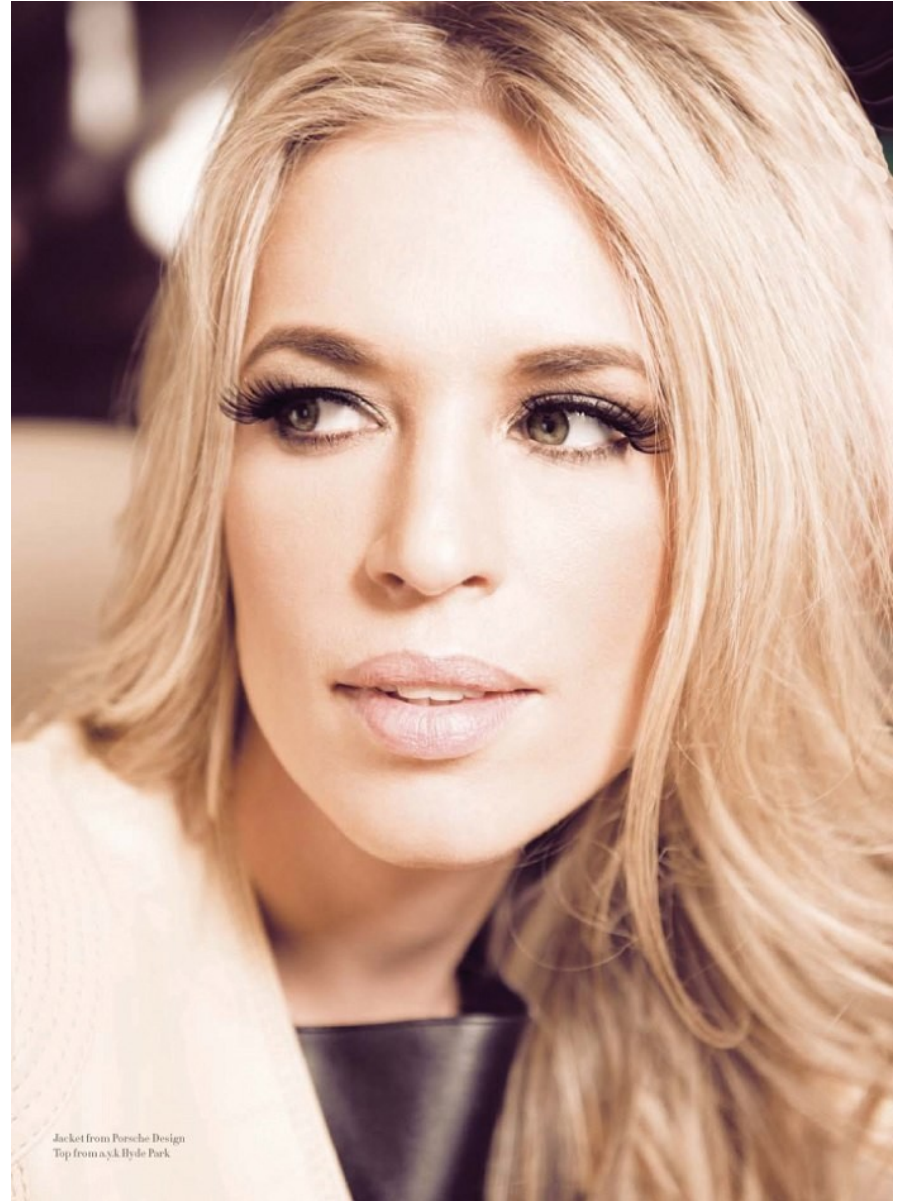


## FARRYN WUEST

Height: 174cm Bust: 86cm Waist: 63cm Hips: 90cm Shoe: 6 UK Hair: Blonde Eyes: Blue/Green

# W MANAGEMENT

*A Division Of Boss Models*



## FARRYN WUEST

Height: 174cm Bust: 86cm Waist: 63cm Hips: 90cm Shoe: 6 UK Hair: Blonde Eyes: Blue/Green

# W MANAGEMENT

*A Division Of Boss Models*



FARRYN WUEST

Height: 174cm Bust: 86cm Waist: 63cm Hips: 90cm Shoe: 6 UK Hair: Blonde Eyes: Blue/Green

# W MANAGEMENT

*A Division Of Boss Models*



FARRYN WUEST

Height: 174cm Bust: 86cm Waist: 63cm Hips: 90cm Shoe: 6 UK Hair: Blonde Eyes: Blue/Green



# W MANAGEMENT

*A Division Of Boss Models*



FARRYN WUEST

Height: 174cm Bust: 86cm Waist: 63cm Hips: 90cm Shoe: 6 UK Hair: Blonde Eyes: Blue/Green

# W MANAGEMENT

*A Division Of Boss Models*



Top from Gallagher Gallozzini  
Pearl Brogues from Studio 8  
Black leather pants from a.k. Hole Park  
Sunglasses from Porsche Design  
Accessories from Zuri

## FARRYN WUEST

Height: 174cm Bust: 86cm Waist: 63cm Hips: 90cm Shoe: 6 UK Hair: Blonde Eyes: Blue/Green

# W MANAGEMENT

*A Division Of Boss Models*



FARRYN WUEST

Height: 174cm Bust: 86cm Waist: 63cm Hips: 90cm Shoe: 6 UK Hair: Blonde Eyes: Blue/Green

# W MANAGEMENT

*A Division Of Boss Models*



## FARRYN WUEST

Height: 174cm Bust: 86cm Waist: 63cm Hips: 90cm Shoe: 6 UK Hair: Blonde Eyes: Blue/Green

# W MANAGEMENT

A Division Of Boss Models



## FARRYN WUEST

Height: 174cm Bust: 86cm Waist: 63cm Hips: 90cm Shoe: 6 UK Hair: Blonde Eyes: Blue/Green

# W MANAGEMENT

*A Division Of Boss Models*



Ciuffi di volpe argentata sul cardigan di soffice cachemire con chiusura lampo (Simonetta Ravizza by Annabella). Pantaloni di pelle "used" (Trevor). Tra il tribale e il design la collana.



Ha un modo intrigante il cardigan mélange chiuso da alamari portato a pelle (Conbipel). Poi pantaloni in pelle ecologica con ricami e dettagli in finto visone (Polvere). Collana indiana con pietre dure e anelli (Terzo Millennio).

## FARRYN WUEST

Height: 174cm Bust: 86cm Waist: 63cm Hips: 90cm Shoe: 6 UK Hair: Blonde Eyes: Blue/Green

# W MANAGEMENT

A Division Of Boss Models



¥208950、シャーツースカート  
37300、サンダル ¥61950/ソ  
エヌ・ジェイ(エンニョ カバサ  
オー コスチューム アシヨナル

▼

豊かな植生のクレーカー国立公園  
の中でも、シンギタ・レボンボ  
ロッジが建つ地域には、固有種  
「レボンボ・ユーフォビア」が育  
まれる。サボテンと樹木をミックス  
したようなこの植物は、そのコ  
ークな形でサバンナの景観をま  
に興味深いものと変えている



で優雅な  
をプリントの  
で装う

▼

このプリントのシャツは、  
うにゆったりとした襟が  
上質な大人のエレガンス  
と異なっていて、シルク  
2000、パンツ ¥78750/  
モ・ジャリン(ヤルグワト  
とラガモ) サングラス ¥  
カルヴァーレ フェラガ  
ム(フェラガモ) サングラス ¥  
27000、アイウェア ¥  
27000

▼

レボンボ・ロッジの  
デザインで知られる  
が、朝と夕方のサファ  
リの念頭にたると屋下  
クレストタイムに、この  
で過ごすのも、在  
る多くのラングが飾られ  
てライトアップされる

## FARRYN WUEST

Height: 174cm Bust: 86cm Waist: 63cm Hips: 90cm Shoe: 6 UK Hair: Blonde Eyes: Blue/Green

# W MANAGEMENT

A Division Of Boss Models



## 至福を誘う 芸術的なまでの クラフトワーク

毎シーズン、高度なテクニックと  
オリジナリティあふれる技術で注  
目を集めるマウリゾ・ペコラー  
ロ。深く繊細なチームに集約の  
ワッドピースで刺しゅうを施した  
ドレスは、この上ない軽やかさと民  
族工芸的な美しさを併せ持つ特  
別な一着。チュールドレス ¥4920  
00。サンダル・参差品 ¥3180  
00 (MAURIZIO PECORARO)

シンギタ・レナンボ・ロウジのワ  
ラント刺しゅうがなく、常に新鮮な  
空間と植上り織物が用意されてい  
る。夕方からのサファリに備えて  
冷たいドリンクでひと息ついたり、  
足を投げ出して横になり、彼方を  
眺めつつまどろんだり。気ままに  
過ごす贅沢を堪能する場所なのだ。



## 自然への愛情を コート のしゅうに託して

12月12日  
2020年、新しいうでまくり  
あしらったスカート。軽や  
か、サウスガートとコントラ  
クトのソフトジャケットのロ  
ンゴニード。北極のシヤック  
イボが空を、海のシヤック  
8380、スカート ¥403200  
8を飾ったバッグ ¥149100  
1 ファーイースト (L・D)

カーニバルの風は、野生動物  
帯のあるロングフェイス  
アイボース、ヒョウ、サイバ  
ンゴ。それはアフリカの熱  
帯を穿つ、そのワイルドな  
10の刺しゅうが、その美しさを  
11の刺しゅうが、その美しさを  
12の刺しゅうが、その美しさを

## FARRYN WUEST

Height: 174cm Bust: 86cm Waist: 63cm Hips: 90cm Shoe: 6 UK Hair: Blonde Eyes: Blue/Green



# W MANAGEMENT

*A Division Of Boss Models*



## FARRYN WUEST

Height: 174cm Bust: 86cm Waist: 63cm Hips: 90cm Shoe: 6 UK Hair: Blonde Eyes: Blue/Green

# W MANAGEMENT

*A Division Of Boss Models*



FARRYN WUEST

Height: 174cm Bust: 86cm Waist: 63cm Hips: 90cm Shoe: 6 UK Hair: Blonde Eyes: Blue/Green