

W MANAGEMENT

A Division Of Boss Models



FARRYN WUEST

Height: 174cm Bust: 86cm Waist: 63cm Hips: 90cm Shoe: 6 UK Hair: Blonde Eyes: Blue/Green

W MANAGEMENT

A Division Of Boss Models



FARRYN WUEST

Height: 174cm Bust: 86cm Waist: 63cm Hips: 90cm Shoe: 6 UK Hair: Blonde Eyes: Blue/Green

W MANAGEMENT

A Division Of Boss Models



Daring duo

Printed co-ords will work hard in your wardrobe. Make a statement and wear them on the top and bottom, or mix and match with basics for a more low-key look. This jacket and ankle-grazer combo can be dressed down with box-fresh trainers for weekends, and dressed up with heels for your nine-to-five.

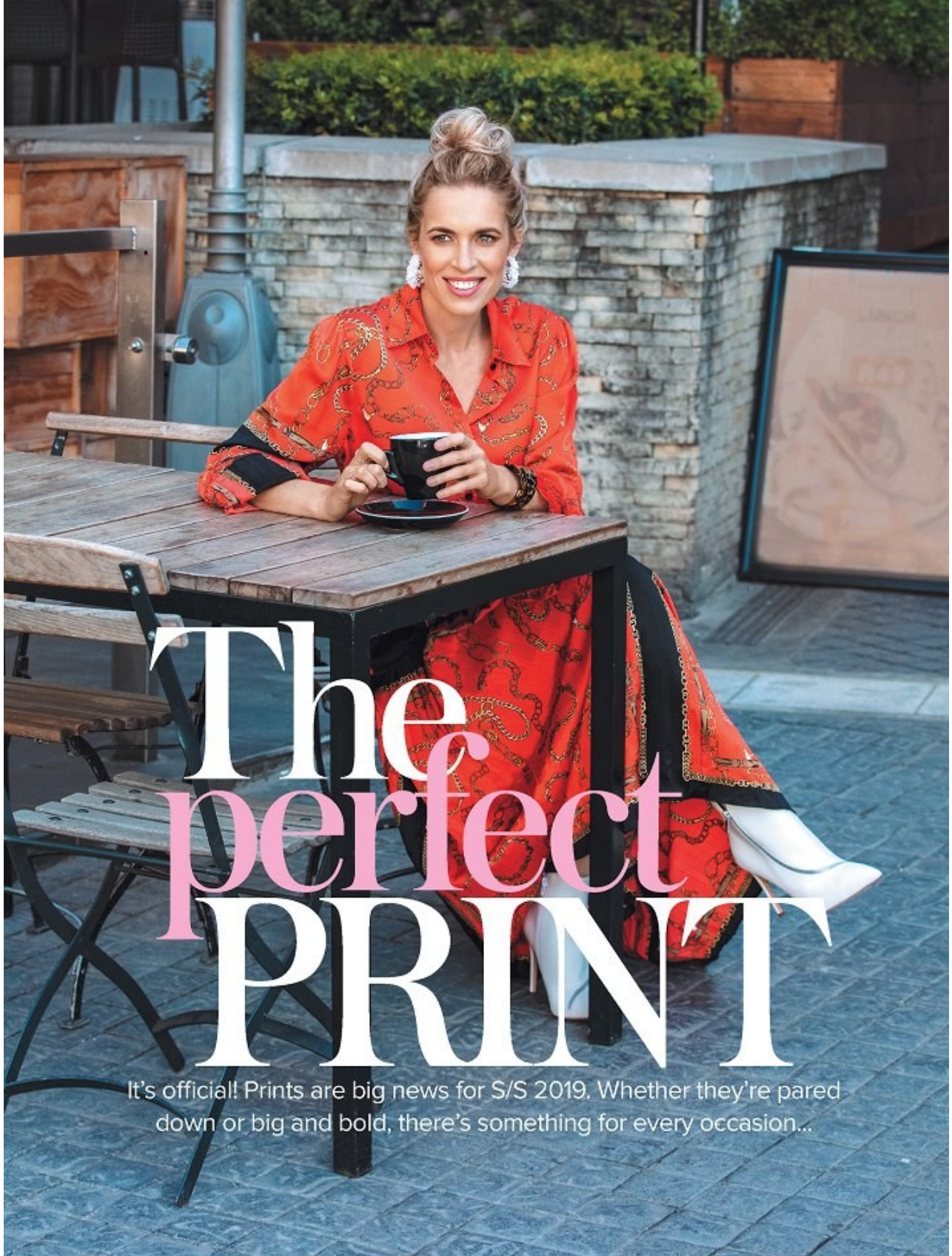
Blazer, R8 795; pants, R4 750, both 38 to 46, Paul Smith.
T-shirt, R329, S to L, Levi's.
Earrings, R80, Colette by Colette Hayman. Ring, R149, Aldo

FARRYN WUEST

Height: 174cm Bust: 86cm Waist: 63cm Hips: 90cm Shoe: 6 UK Hair: Blonde Eyes: Blue/Green

W MANAGEMENT

A Division Of Boss Models



The perfect PRINT

It's official! Prints are big news for S/S 2019. Whether they're pared down or big and bold, there's something for every occasion...

FARRYN WUEST

Height: 174cm Bust: 86cm Waist: 63cm Hips: 90cm Shoe: 6 UK Hair: Blonde Eyes: Blue/Green



Pretty patchwork

A mixed-print dress will help you master the chaos of clashing patterns without even trying. This showstopper needs minimal styling, so keep your accessories simple.
Dress, R799, 34 to 42, H&M. Earrings, R160, Colette by Colette Hayman.
Black-bead necklace, R175, Poetry.
Gold layered necklace, R460, Jangi.
Cuff, R160, Naledi at Woolworths.
Heels, R199, Mr Price >>

FARRYN WUEST

Height: 174cm Bust: 86cm Waist: 63cm Hips: 90cm Shoe: 6 UK Hair: Blonde Eyes: Blue/Green

W MANAGEMENT

A Division Of Boss Models

style inspiration



Sporting great

Look effortlessly elegant with a head-to-toe large-scale print. This cool navy matching set is perfect for any event, and the loose fit means extra comfort. Embrace the sports vibe and finish with sneakers.

Blouse, R699; pants, R699, both 6 to 18, Poetry. Earrings, R220, Colette by Colette Hayman. Rings, from R290 each, both Jangi. Bag, R5 995, Michael Kors w&h

The w&h fashion team shot on location at Melrose Arch (melrosearch.co.za), Café Rio and Rodizio Grill and Tapas (011 483 1910).

STYLIST TIMMARA NAIDOO PHOTOGRAPHS GARETH BARCLAY HAIR AND MAKE UP DANICA J THOMAS MODEL FARRYN WUEST AT BOSS MODELS OPT FOR WHERE TO BUY SEE STOKISTS PAGE AT WWW.WOMEN&HOME.MAGAZINE

FARRYN WUEST

Height: 174cm Bust: 86cm Waist: 63cm Hips: 90cm Shoe: 6 UK Hair: Blonde Eyes: Blue/Green

W MANAGEMENT

A Division Of Boss Models

style inspiration



The clash

Sometimes it's good to throw caution to the wind and shimmy yourself into a multicoloured number for extra oomph. Striking florals with a contrasting baby-blue background give this dress a spring vibe, while the wrap detail takes it back to a vintage feel. Pair with block colours to avoid looking too busy.

Dress, R219, 30 to 44, Mr Price.

Necklace, R270; earrings, R160, both Colette by Colette Hayman.

Clutch, R3 259, Michael Kors.

Heels, R1 599, Poetry >>

woman&home IT'S ALL ABOUT YOU! 25

FARRYN WUEST

Height: 174cm Bust: 86cm Waist: 63cm Hips: 90cm Shoe: 6 UK Hair: Blonde Eyes: Blue/Green

W MANAGEMENT

A Division Of Boss Models



Prints charming

A slogan sweater adds a playful touch and, when teamed with a printed midi skirt, will see you through the seasons. For extra waist definition, half-tuck the jumper into the skirt's waistband and finish off with laid-back kicks for a fashion-forward look.

Sweater, R329, XS to XL, H&M.

Skirt, R999, 4 to 16, Witchery.

Earrings, R120, Colette by Colette

Hayman. Necklace, R120 with

a pair of earrings, Queenspark.

Rings, R199, for set of four, Aldo.

Sneakers, R699, Call It Spring >>

FARRYN WUEST

Height: 174cm Bust: 86cm Waist: 63cm Hips: 90cm Shoe: 6 UK Hair: Blonde Eyes: Blue/Green



White out

Ankle boots will give a floaty frock a modern edge – for a fresh twist for spring, choose a white pair. The pleated skirt and just-above-the-ankle length adds a flattering and feminine finish.

Left: Dress, R1 999, one size, Mel. Earrings, R200, Colette by Colette Hayman. Necklace, R430, Savage Jewellery. Bangle, R120, Queenspark. Yellow-gold ring, R195, Jangi. Rose-gold rings, R199 for set of four; boots, R1 999, both Aldo

Shape-shifter

The classic shirt has been given a cool, contemporary update with the injection of bold picture prints. Make it the main event and keep the rest of your look simple, teaming it with sleek tailored trousers and colour-contrasting heels for a look that can take you straight from work to a meal out.

This page: Shirt, R5 895, 38 to 48, Paul Smith. Pants, R899, 4 to 16, Forever New. Earrings, R179, Curativ. Rings, from R170 each, all Jangi. Heels, R499, Woolworths >>

FARRYN WUEST

Height: 174cm Bust: 86cm Waist: 63cm Hips: 90cm Shoe: 6 UK Hair: Blonde Eyes: Blue/Green

W MANAGEMENT

A Division Of Boss Models



FARRYN WUEST

Height: 174cm Bust: 86cm Waist: 63cm Hips: 90cm Shoe: 6 UK Hair: Blonde Eyes: Blue/Green

W MANAGEMENT

A Division Of Boss Models



FARRYN WUEST

Height: 174cm Bust: 86cm Waist: 63cm Hips: 90cm Shoe: 6 UK Hair: Blonde Eyes: Blue/Green

W MANAGEMENT

A Division Of Boss Models



FARRYN WUEST

Height: 174cm Bust: 86cm Waist: 63cm Hips: 90cm Shoe: 6 UK Hair: Blonde Eyes: Blue/Green

W MANAGEMENT

A Division Of Boss Models



FARRYN WUEST

Height: 174cm Bust: 86cm Waist: 63cm Hips: 90cm Shoe: 6 UK Hair: Blonde Eyes: Blue/Green

W MANAGEMENT

A Division Of Boss Models



PLAY



FARRYN WUEST

Height: 174cm Bust: 86cm Waist: 63cm Hips: 90cm Shoe: 6 UK Hair: Blonde Eyes: Blue/Green

W MANAGEMENT

A Division Of Boss Models



FARRYN WUEST

Height: 174cm Bust: 86cm Waist: 63cm Hips: 90cm Shoe: 6 UK Hair: Blonde Eyes: Blue/Green

W MANAGEMENT

A Division Of Boss Models



FARRYN WUEST

Height: 174cm Bust: 86cm Waist: 63cm Hips: 90cm Shoe: 6 UK Hair: Blonde Eyes: Blue/Green

W MANAGEMENT

A Division Of Boss Models



FARRYN WUEST

Height: 174cm Bust: 86cm Waist: 63cm Hips: 90cm Shoe: 6 UK Hair: Blonde Eyes: Blue/Green

W MANAGEMENT

A Division Of Boss Models



FARRYN WUEST

Height: 174cm Bust: 86cm Waist: 63cm Hips: 90cm Shoe: 6 UK Hair: Blonde Eyes: Blue/Green

W MANAGEMENT

A Division Of Boss Models

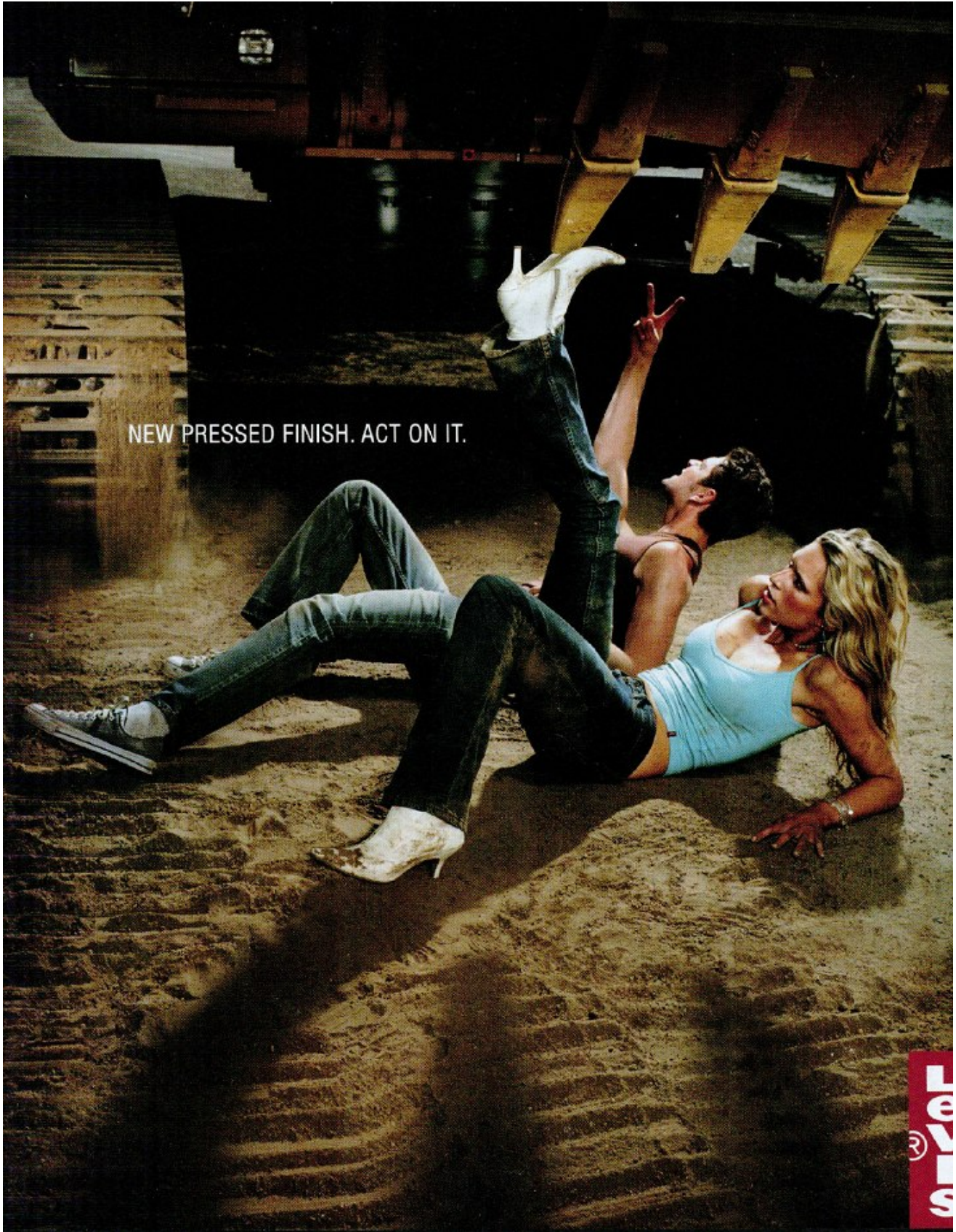


FARRYN WUEST

Height: 174cm Bust: 86cm Waist: 63cm Hips: 90cm Shoe: 6 UK Hair: Blonde Eyes: Blue/Green

W MANAGEMENT

A Division Of Boss Models



NEW PRESSED FINISH. ACT ON IT.

FARRYN WUEST

Height: 174cm Bust: 86cm Waist: 63cm Hips: 90cm Shoe: 6 UK Hair: Blonde Eyes: Blue/Green

W MANAGEMENT

A Division Of Boss Models



FARRYN WUEST

Height: 174cm Bust: 86cm Waist: 63cm Hips: 90cm Shoe: 6 UK Hair: Blonde Eyes: Blue/Green

W MANAGEMENT

A Division Of Boss Models



Top, Milk Teeth R400.
Pants, Milk Teeth R320.
Necklace, Tanya Tait.
Price on Request.
Clutch Bag, Jo Borkett R1190.

FARRYN WUEST

Height: 174cm Bust: 86cm Waist: 63cm Hips: 90cm Shoe: 6 UK Hair: Blonde Eyes: Blue/Green

W MANAGEMENT

A Division Of Boss Models



FARRYN WUEST

Height: 174cm Bust: 86cm Waist: 63cm Hips: 90cm Shoe: 6 UK Hair: Blonde Eyes: Blue/Green

W MANAGEMENT

A Division Of Boss Models



Jacket from Porsche Design
Top from ayk Hyde Park

FARRYN WUEST

Height: 174cm Bust: 86cm Waist: 63cm Hips: 90cm Shoe: 6 UK Hair: Blonde Eyes: Blue/Green

W MANAGEMENT

A Division Of Boss Models



FARRYN WUEST

Height: 174cm Bust: 86cm Waist: 63cm Hips: 90cm Shoe: 6 UK Hair: Blonde Eyes: Blue/Green

W MANAGEMENT

A Division Of Boss Models



FARRYN WUEST

Height: 174cm Bust: 86cm Waist: 63cm Hips: 90cm Shoe: 6 UK Hair: Blonde Eyes: Blue/Green

W MANAGEMENT

A Division Of Boss Models



FARRYN WUEST

Height: 174cm Bust: 86cm Waist: 63cm Hips: 90cm Shoe: 6 UK Hair: Blonde Eyes: Blue/Green

W MANAGEMENT

A Division Of Boss Models



Top from Callaghan Collections
Pinst Blouse from Stella's
Black leather pants from a.k. B de Park
Sunglasses from Porsche Design
Accessories from Zori

FARRYN WUEST

Height: 174cm Bust: 86cm Waist: 63cm Hips: 90cm Shoe: 6 UK Hair: Blonde Eyes: Blue/Green

W MANAGEMENT

A Division Of Boss Models



FARRYN WUEST

Height: 174cm Bust: 86cm Waist: 63cm Hips: 90cm Shoe: 6 UK Hair: Blonde Eyes: Blue/Green

W MANAGEMENT

A Division Of Boss Models



FARRYN WUEST

Height: 174cm Bust: 86cm Waist: 63cm Hips: 90cm Shoe: 6 UK Hair: Blonde Eyes: Blue/Green

W MANAGEMENT

A Division Of Boss Models

MODA

Brividi di cachemire

Aria un po' hippy per il dolcevita senza maniche (Glenfield) portato con i pantaloni in nappa (Conbipel, come la giacca) e abbinato alla collana multifili di perline (archivio Sharra Pagano), alla tasca in raso con specchietti (Mister India) e alla cintura di cuoio con placche d'argento (Nanni).

TRUCCO E PETTINATURE LOLLO PER GIANNI DI MIURO AL ASSIO 03

88 INDIRIZZI A PAG. 170

FARRYN WUEST

Height: 174cm Bust: 86cm Waist: 63cm Hips: 90cm Shoe: 6 UK Hair: Blonde Eyes: Blue/Green

W MANAGEMENT

A Division Of Boss Models



FARRYN WUEST

Height: 174cm Bust: 86cm Waist: 63cm Hips: 90cm Shoe: 6 UK Hair: Blonde Eyes: Blue/Green

W MANAGEMENT

A Division Of Boss Models



心地よい リネンの感触を 贅沢に味わう

たっぷりとしたギャザーやフリ
ツのシルエットが今年らしいロエ
ベ。無造作なまでの軽やかさが、
アフリカの景色に調和する。ノー
ズリープブラウス ¥132300、スカ
ート ¥140700、ロエベカスタマ
インフォメーションサービス（ロ
エベ） 黒のVネック ¥35700、グ
レーのバングル ¥50400、ヴェリ
タス（S&P インターナショナル）

クルーガー国立公園には、「ブライ
ベート・ゲームリザーブ」と呼ばれ
る野生動物保護区が存在する。シ
ンキタ・レボンボ・ロジもその
ひとつ。本来公園内では許されな
い野生シニマでのサファリ・ド
ライブも、ここでは可能。より自
然と密接なサファリ体験ができる。

FARRYN WUEST

Height: 174cm Bust: 86cm Waist: 63cm Hips: 90cm Shoe: 6 UK Hair: Blonde Eyes: Blue/Green

W MANAGEMENT

A Division Of Boss Models



FARRYN WUEST

Height: 174cm Bust: 86cm Waist: 63cm Hips: 90cm Shoe: 6 UK Hair: Blonde Eyes: Blue/Green

W MANAGEMENT

A Division Of Boss Models



Ciuffi di volpe argentata sul cardigan di soffice cachemire con chiusura lampo (Simonetta Ravizza by Annabella). Pantaloni di pelle "used" (Trevor). Tra il tribale e il design la collana.

FARRYN WUEST

Height: 174cm Bust: 86cm Waist: 63cm Hips: 90cm Shoe: 6 UK Hair: Blonde Eyes: Blue/Green

W MANAGEMENT

A Division Of Boss Models



Ha un modo
intrigante il
cardigan mélange
chiuso da alamari
portato a pelle
(Conbipel). Poi,
pantaloni in pelle
ecologica con
ricami e dettagli
in finto visone
(Polvere). Collana
indiana con pietre
dure e anelli
(Terzo Millenio).

FARRYN WUEST

Height: 174cm Bust: 86cm Waist: 63cm Hips: 90cm Shoe: 6 UK Hair: Blonde Eyes: Blue/Green

W MANAGEMENT

A Division Of Boss Models



¥208950、シャージュースカート
37300、サンダル ¥61950 / シ
エヌ・ジェイ(エンニョ カバサ
オー コスチューム ナショナル



豊かな植生のクルーガー国立公
の中でも、シンギタ・レボン
ロッジが建つ地域には、固有種
「レボンボ・ユーフォビア」が見
れる。サボテンと樹木をミックス
したようなこの植物は、そのコ
ークな形でサバンナの景観をさ
に興味深いものへと変えている

FARRYN WUEST

Height: 174cm Bust: 86cm Waist: 63cm Hips: 90cm Shoe: 6 UK Hair: Blonde Eyes: Blue/Green

W MANAGEMENT

A Division Of Boss Models



で優雅な
をプリントの
ツで装う

鮮やかなプリントのシャツは、
うにゆったりとした袖が
上質な大人のエレガンス
と着こなして。シルク
5000、パンツ¥78750/
モ・ジャン(サルヴァ
ラガモ) サングラス¥
カルヴァーレ フェラガ
ウェア事業部(サルヴァ
ラガモ アイウェア)

レボンボ・ロップの
ディヘッドまで設えられ
が。朝と夕方のサファ
の合間にあたる度下ガ
ックスタイムに、このブ
ドで過ごすのも快楽。夜
数多くのランプが飾られ
にライトアップされる。

FARRYN WUEST

Height: 174cm Bust: 86cm Waist: 63cm Hips: 90cm Shoe: 6 UK Hair: Blonde Eyes: Blue/Green

W MANAGEMENT

A Division Of Boss Models



至福を誘う 芸術的なまでの クラフトワーク

毎シーズン、高度なテクニックと
オリジナリティあふれる装飾で注
目を集めるマウリツィオ・ペコラー
ロ。薄く繊細なチュールに無数の
ウッドビーズで刺しゅうを施した
ドレスは、この上ない贅沢さと民
族工芸的な美しさを併せもった特
別な一着。チュールドレス ¥4620
00、サンダル・参考商品/三喜高
事 (MAURIZIO PECORARO)

シンギタ・レホンボ・ロッシのラ
ウンジには窓がなく、常に新鮮な
空気と極上の眺望が用意されて
いる。夕方からのサファリに備えて
冷たいドリンクでひと息ついたり、
足を投げ出して横になり、彼方を
眺めつつまどろんだり。気ままに
過ごす贅沢を堪能する場所なのだ。

71

FARRYN WUEST

Height: 174cm Bust: 86cm Waist: 63cm Hips: 90cm Shoe: 6 UK Hair: Blonde Eyes: Blue/Green

W MANAGEMENT

A Division Of Boss Models



然への愛情を
コート
しゅうに託して

の機会に記されているすべての
の姿を、利しゅうでぐるり
しあしらったスカート。軽や
スカーフとコンパ
のショートジャケットの
コートで、上品なリラク
ションが実現。夏のジャケッ
53800、スカート ¥403200、
8を飾ったバッグ ¥149100、
1 ファーイースト (エトロ)

ーが「国立公園は、野生動物
価格であるヒンダファイブ
クイオンス、セウ、サイバ
ロー」をはじめ、多くの動
息するサファリのメッカ
の中で、見えない
期待に満ちた女性を
ふりにするの愛は、

FARRYN WUEST

Height: 174cm Bust: 86cm Waist: 63cm Hips: 90cm Shoe: 6 UK Hair: Blonde Eyes: Blue/Green

W MANAGEMENT

A Division Of Boss Models



FARRYN WUEST

Height: 174cm Bust: 86cm Waist: 63cm Hips: 90cm Shoe: 6 UK Hair: Blonde Eyes: Blue/Green

W MANAGEMENT

A Division Of Boss Models



This page Jacket, R1 200, skirt, R790;
both Klük; sandals, R269, Zoom; belt,
R480, One; Police watch, R1 495, CJR;
bracelets, R900, Lulu Belle.

Opposite Dress, R1 010, Diesel;
boots, R1 680, Spaghetti Mafia;
beads, R20 each, Redfern & Taylor;
wooden cuff, R290, Africa Nova.

FARRYN WUEST

Height: 174cm Bust: 86cm Waist: 63cm Hips: 90cm Shoe: 6 UK Hair: Blonde Eyes: Blue/Green

W MANAGEMENT

A Division Of Boss Models



FARRYN WUEST

Height: 174cm Bust: 86cm Waist: 63cm Hips: 90cm Shoe: 6 UK Hair: Blonde Eyes: Blue/Green

W MANAGEMENT

A Division Of Boss Models



FARRYN WUEST

Height: 174cm Bust: 86cm Waist: 63cm Hips: 90cm Shoe: 6 UK Hair: Blonde Eyes: Blue/Green