

W MANAGEMENT

A Division Of Boss Models

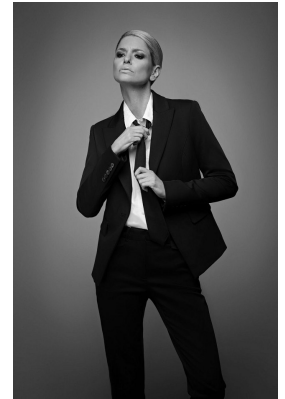


ANDREA ASHTON (LINDBERG)

Height: 174cm Bust: 86cm Waist: 66cm Hips: 91cm Shoe: 4 UK Hair: Blonde Eyes: Brown

W MANAGEMENT

A Division Of Boss Models



ANDREA ASHTON (LINDBERG)

Height: 174cm Bust: 86cm Waist: 66cm Hips: 91cm Shoe: 4 UK Hair: Blonde Eyes: Brown