

citizen

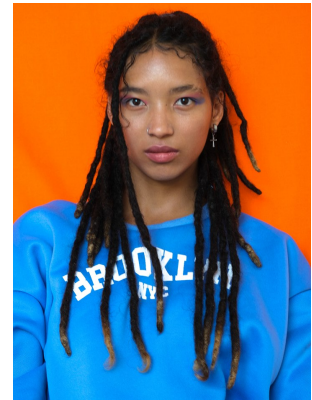
A Division Of Boss Models



CHARNE GEORGE

Height: 162cm Bust: 78cm Waist: 68cm Hips: 90cm Shoe: 5 UK Hair: Brunette Eyes: Brown

citizen
A Division Of Boss Models



CHARNE GEORGE

Height: 162cm Bust: 78cm Waist: 68cm Hips: 90cm Shoe: 5 UK Hair: Brunette Eyes: Brown