



**Keep
It Light**

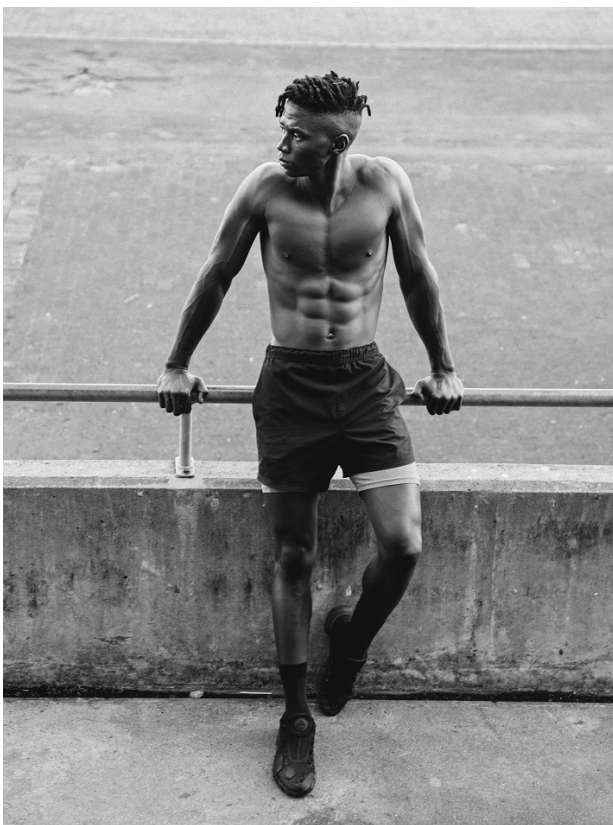
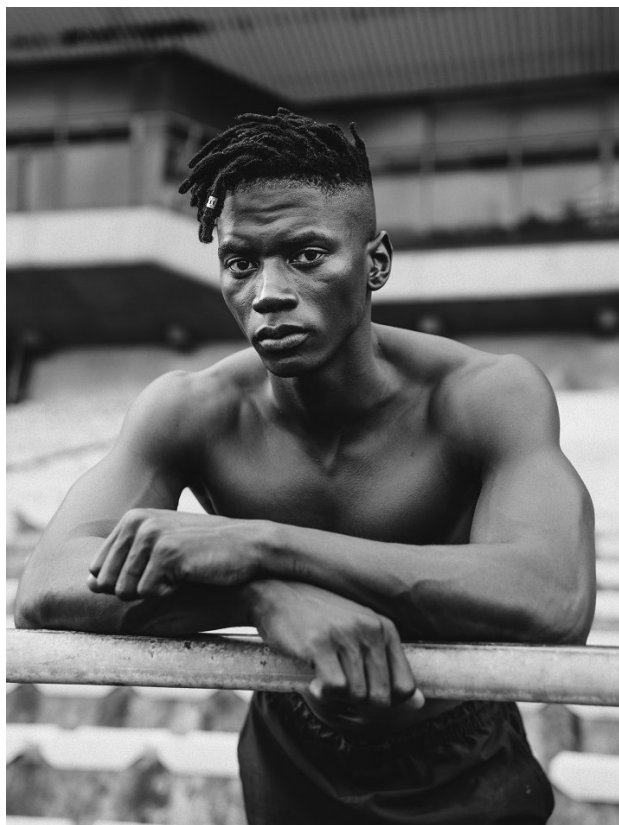
Don't feel restricted to dark shades if you're attending an outdoor wedding. Lighter colours are a great choice for ceremonies in the warmer months. This boige suit creates a light, airy look that gets with pastel colours, bridesmaid dresses and even the wedding décor.

Zara blazer £1,000
Theory shirt \$699
Eurosuit tie and pocket square \$200
Versace sunglasses \$4,200
Moreblanc watch R72,100

OLLIE SOKANYILE

Height: 183cm Chest: 101cm Waist: 78cm Suit: 40.5 R Shoe: 9 UK Hair: Black Eyes: Brown

citizen
A Division Of Boss Models



OLLIE SOKANYILE

Height: 183cm Chest: 101cm Waist: 78cm Suit: 40.5 R Shoe: 9 UK Hair: Black Eyes: Brown

citizen

A Division Of Boss Models



OLLIE SOKANYILE

Height: 183cm Chest: 101cm Waist: 78cm Suit: 40.5 R Shoe: 9 UK Hair: Black Eyes: Brown

citizen
A Division Of Boss Models



OLLIE SOKANYILE

Height: 183cm Chest: 101cm Waist: 78cm Suit: 40.5 R Shoe: 9 UK Hair: Black Eyes: Brown

citizen
A Division Of Boss Models



OLLIE SOKANYILE

Height: 183cm Chest: 101cm Waist: 78cm Suit: 40.5 R Shoe: 9 UK Hair: Black Eyes: Brown



OLLIE SOKANYILE

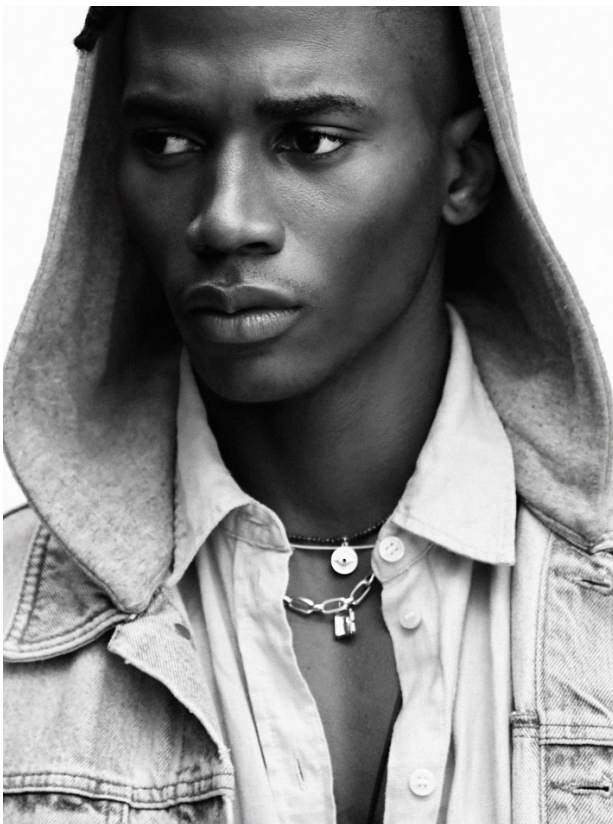
Height: 183cm Chest: 101cm Waist: 78cm Suit: 40.5 R Shoe: 9 UK Hair: Black Eyes: Brown



OLLIE SOKANYILE

Height: 183cm Chest: 101cm Waist: 78cm Suit: 40.5 R Shoe: 9 UK Hair: Black Eyes: Brown

citizen
A Division Of Boss Models



OLLIE SOKANYILE

Height: 183cm Chest: 101cm Waist: 78cm Suit: 40.5 R Shoe: 9 UK Hair: Black Eyes: Brown