

# BOSS MODELS

CAPE TOWN

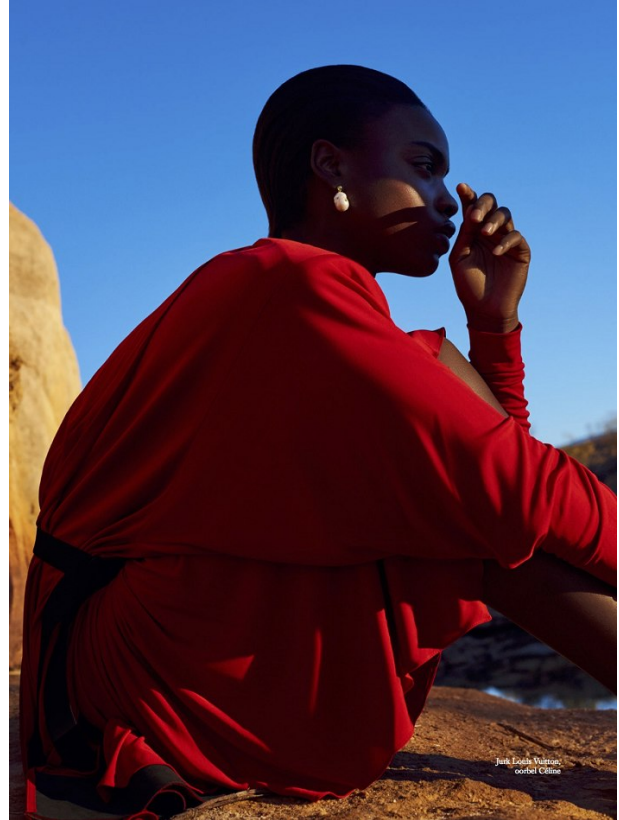


## MIDE OGUNDELE

Height: 178cm Bust: 85cm Waist: 64cm Hips: 90cm Shoe: 7 UK Hair: Black Eyes: Brown

# BOSS MODELS

CAPE TOWN



issey Miyake.com



issey Miyake.com

**ISSEY MIYAKE**

## MIDE OGUNDELE

Height: 178cm Bust: 85cm Waist: 64cm Hips: 90cm Shoe: 7 UK Hair: Black Eyes: Brown

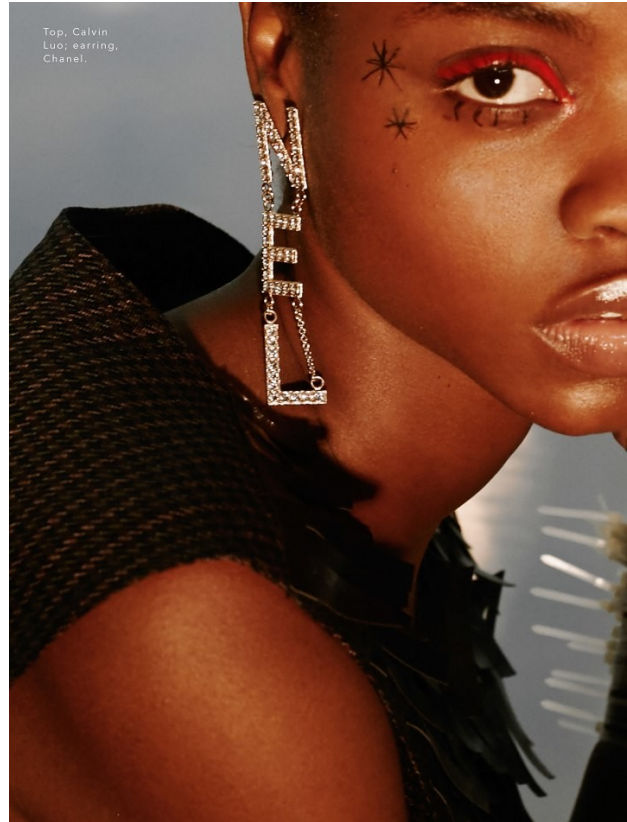






# BOSS MODELS

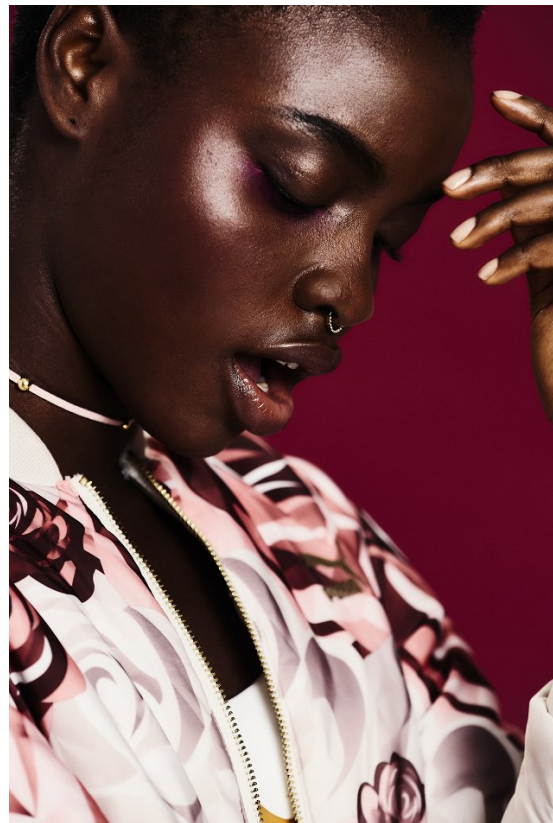
CAPE TOWN



## POPPY KAIN Dressing up iconic pieces

I chose the very first outfit to hit the catwalk from Raf Simons' debut collection at Calvin Klein. It's not just the coolest look of the season, but a piece of fashion history. Simons has revitalised this iconic brand, blending minimalist house codes with classic Americana.

When a look is this strong, accessories have to step up. Look for pieces that are beautiful objects in their own right. Keep the lines clean and sharp – a fussy, overly feminine bag would kill the effect. A sleek envelope clutch by Dries Van Noten, or shoulder bag with punchy, red detailing work well. Don't weigh down this look with too much jewellery. These sculptural silver ear cuffs by Charlotte Chesnais – which mirror the Calvin Klein metal-tipped cowboy boots – are all that's needed.



## MIDE OGUNDELE

Height: 178cm Bust: 85cm Waist: 64cm Hips: 90cm Shoe: 7 UK Hair: Black Eyes: Brown



# BOSS MODELS

CAPE TOWN



Dress GalluzoGini;  
necklace Witchery  
at Woolworths  
R299; cuff Mimco  
at Woolworths R799



Dress Jordyn Kelley  
Coatlam Design; earrings  
Witchery at Woolworths  
R299; boots H&M R799

## MIDE OGUNDELE

Height: 178cm Bust: 85cm Waist: 64cm Hips: 90cm Shoe: 7 UK Hair: Black Eyes: Brown

# BOSS MODELS

CAPE TOWN



116 glamour



## MIDE OGUNDELE

Height: 178cm Bust: 85cm Waist: 64cm Hips: 90cm Shoe: 7 UK Hair: Black Eyes: Brown



# BOSS MODELS

CAPE TOWN



THE SHOOT

THE TIE  
Inject some  
glamour to  
glittering  
brooches

**MILITARY TACTICS**  
ARMY SURPLUS is a SURE-FIRE WAY TO  
NAIL this SS19 LOOK (GREAT  
NEWS if YOU'RE A FAN of VINTAGE)

*Jumper, \$240, NINETY PERCENT. Skirt, \$59.99, MANGO. Shirt, \$285, ISABEL MARANT ETOILE. Brooches,  
clockwise from far left: rectangle, \$165; heart, \$145; and star, \$165, all SUSAN CAPLAN. Wing earring  
(pinned to jumper), \$194, APPLES & FIGS. Hoop earring (pinned to jumper), \$84, JUSIN CLENQUET. Star, \$78,  
and arrow, \$14, both BUTLER & WILSON. Ring, from \$60, both PANDORA*

THE RUNWAY  
Look to  
Givenchy and  
Dior for

DEEZE POKE, MARIANNE FUGLEIN

Opposite:

*PANDA MONSIEUR JUMPER BY BILLY AND SHWTEL  
BROCH MADE BEHIND SCENE BY GUY ARIË, BY BILLY  
AND SHWTEL; BUCK, BARK AND BOWLING SHIRT BY BILLY  
AND SHWTEL; BUCK, BARK AND BOWLING ALL CHERALP;  
SHIRT, BUCK, POKE, BOTTLED AND BOTTLED;  
ALL DONNA KARAN, 2019 DRESSES*

## MIDE OGUNDELE

Height: 178cm Bust: 85cm Waist: 64cm Hips: 90cm Shoe: 7 UK Hair: Black Eyes: Brown



# BOSS MODELS

CAPE TOWN



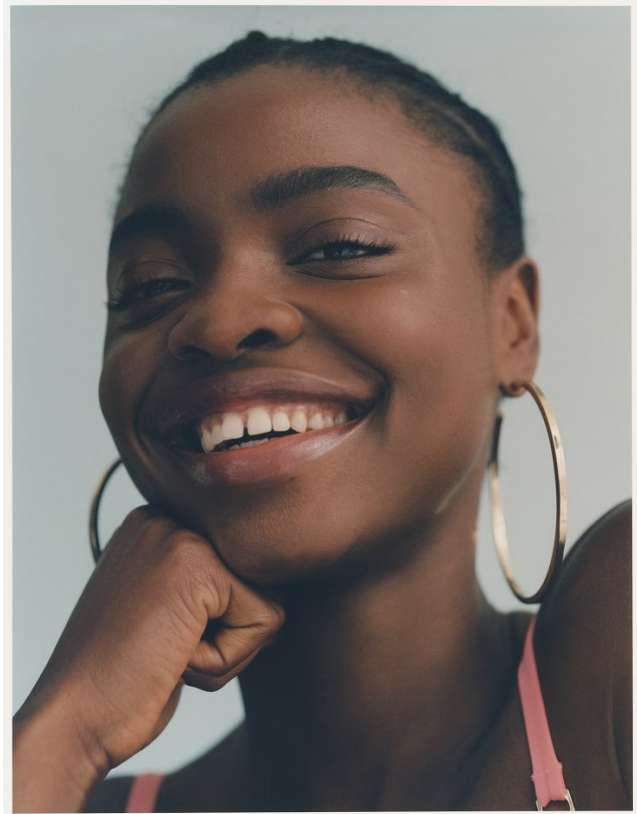
## MIDE OGUNDELE

Height: 178cm Bust: 85cm Waist: 64cm Hips: 90cm Shoe: 7 UK Hair: Black Eyes: Brown



# BOSS MODELS

CAPE TOWN



## MIDE OGUNDELE

Height: 178cm Bust: 85cm Waist: 64cm Hips: 90cm Shoe: 7 UK Hair: Black Eyes: Brown