

# BOSS MODELS

CAPE TOWN



STUART BELLAMY

Height: 193cm Chest: 106cm Waist: 86cm Suit: 42 L Shoe: 11 UK Hair: Blonde Eyes: Blue

# BOSS MODELS

CAPE TOWN



STUART BELLAMY

Height: 193cm Chest: 106cm Waist: 86cm Suit: 42 L Shoe: 11 UK Hair: Blonde Eyes: Blue

# BOSS MODELS

CAPE TOWN



## STOCKISTS

EDGARS, 0860692274, [www.edgars.co.za/Edgars](http://www.edgars.co.za/Edgars)

SECOND TIME AROUND, 021 423 1674 Long St

MUNGO AND JEMIMA, 021 424 5016, [www.mungoandjemima.com](http://www.mungoandjemima.com)

LEVI'S, 021 425 3046, [www.levi.co.za](http://www.levi.co.za)

SECOND HAND ROSE, 021 674 4270 Claremont

YMEWKM, [www.facebook.com/pages/You-Me-Everyone-we-know-Market/146962628667694](https://www.facebook.com/pages/You-Me-Everyone-we-know-Market/146962628667694)

WOOLWORTHS, 0860 022 002, [www.woolworths.co.za](http://www.woolworths.co.za)

JO BORKETT, 011 462 0604, [www.joborkett.co.za](http://www.joborkett.co.za)

## STUART BELLAMY

Height: 193cm Chest: 106cm Waist: 86cm Suit: 42 L Shoe: 11 UK Hair: Blonde Eyes: Blue

# BOSS MODELS

CAPE TOWN

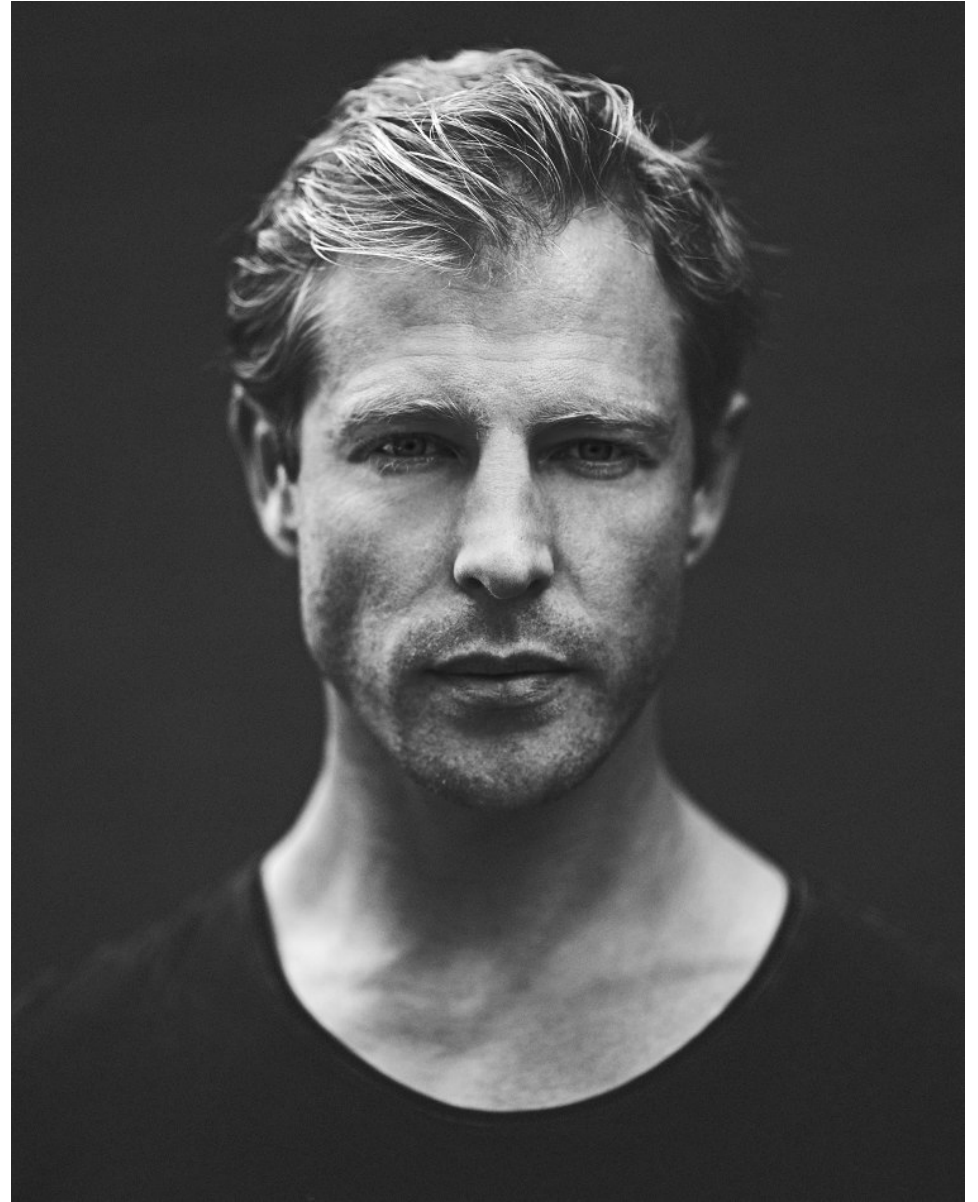


STUART BELLAMY

Height: 193cm Chest: 106cm Waist: 86cm Suit: 42 L Shoe: 11 UK Hair: Blonde Eyes: Blue

# BOSS MODELS

CAPE TOWN



STUART BELLAMY

Height: 193cm Chest: 106cm Waist: 86cm Suit: 42 L Shoe: 11 UK Hair: Blonde Eyes: Blue

# BOSS MODELS

CAPE TOWN



**GGStyle**

## HIGH ROLLER

Opposite page from left: Adem wears **Zara** coat R1 999, rollneck R7 750. **Hugo Boss Red** suit R10 750. **Tom Ford** at **SDM** eyewear R7 500. **Arthur Jack** at **Tread+Miller** bag R4 650. **Stuart** wears **Burberry** coat R28 490, scarf R7 090. **H&M** sweater R529, pants R799. **Tom Ford** at **Armstrong** eyewear R23 37. **Arthur Jack** at **Tread+Miller** bag R5 999

**Tiger of Sweden** jacket R7 499. **Zara** rollneck R529. **Tom Ford** at **Armstrong** eyewear R6 325

**Tip Spend more** on designer shades or a classic grey blazer.

**Tip Spend less** on a turtleneck or rollneck.

SEPTEMBER 2017 **GG.CO.ZA** 91

## STUART BELLAMY

Height: 193cm Chest: 106cm Waist: 86cm Suit: 42 L Shoe: 11 UK Hair: Blonde Eyes: Blue

# BOSS MODELS

CAPE TOWN



STUART BELLAMY

Height: 193cm Chest: 106cm Waist: 86cm Suit: 42 L Shoe: 11 UK Hair: Blonde Eyes: Blue

# BOSS MODELS

CAPE TOWN



## STUART BELLAMY

Height: 193cm Chest: 106cm Waist: 86cm Suit: 42 L Shoe: 11 UK Hair: Blonde Eyes: Blue



# BOSS MODELS

CAPE TOWN



STUART BELLAMY

Height: 193cm Chest: 106cm Waist: 86cm Suit: 42 L Shoe: 11 UK Hair: Blonde Eyes: Blue

# BOSS MODELS

CAPE TOWN



From left: Stuart wears: Gucci jacket R24 800, shirt R7 200, pants R8 900, tie R2 700.  
Adam wears: Hackett jacket R3 800, shirt R2 095, Calvin Klein pants R2 299. The stylist's own: Aston Martin Vanquish Volante available from Aston Martin SA, 011-301-7000, claytona.co.za

## STUART BELLAMY

Height: 193cm Chest: 106cm Waist: 86cm Suit: 42 L Shoe: 11 UK Hair: Blonde Eyes: Blue

# BOSS MODELS

CAPE TOWN



## STUART BELLAMY

Height: 193cm Chest: 106cm Waist: 86cm Suit: 42 L Shoe: 11 UK Hair: Blonde Eyes: Blue

# BOSS MODELS

CAPE TOWN

FASHION ADVICE **ESSENTIALS**



## Mix & Match

**A**

Break your suit up into components, like a blazer that you can pair with other pieces or colours, and grey trousers for a more casual finish.

**B**

An open collared shirt with a retro print creates an interesting effect when layered under a green blazer and over grey pants.

**C**

Other friends to the green and grey family are browns. Consider this colour for accessorising, but choose your pieces wisely. If you're going more retro laid-back, why not a brown leather slipper?

**Topman** blazer R1 299, shirt R649, pants R749, belt R229. **Saint Laurent** at SDM eyewear R5 747. **Daniel Klein** at CJR Gift Sales watch R1 495. **Topman** shoes R749



JULY 2016 **GG.CO.ZA** 27

FASHION ADVICE **ESSENTIALS**



## Trendy

**A**

Though not ideal for the office, the trendier approach to suiting is the skinny look. Of course, even with skinny, you need to pay attention to the cut, ensuring that you have enough space in the shoulder and arm.

**B**

When going skinny, if you aren't opting for ultra-slick and minimal, consider layering your shirt with a knit and a matching knitted tie for a little wit.

**C**

The cropped suit length is one that a few men struggle with, but done right it's dashing – and a throwback to the aristocratic dress of yore. As it's winter, make sure you wear a thick pair of socks.

**H&M** blazer R899, jersey R599, pants R399, tie R299. **Ben Sherman** shirt R1 349. **Polo** at SDM eyewear R1 475. **Timberland** at CJR Gift Sales Dual Analog watch R2 450. **Aldo** brogues R1 599

JULY 2016 **GG.CO.ZA** 25

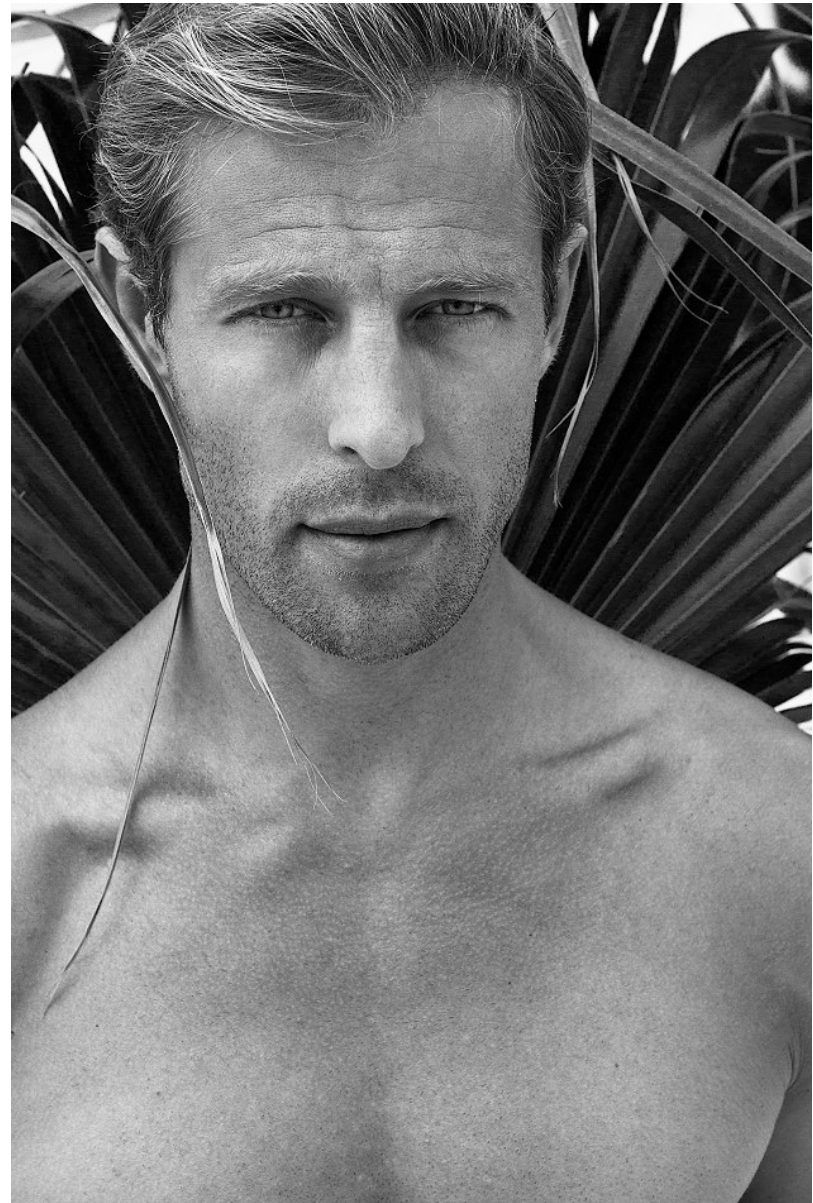
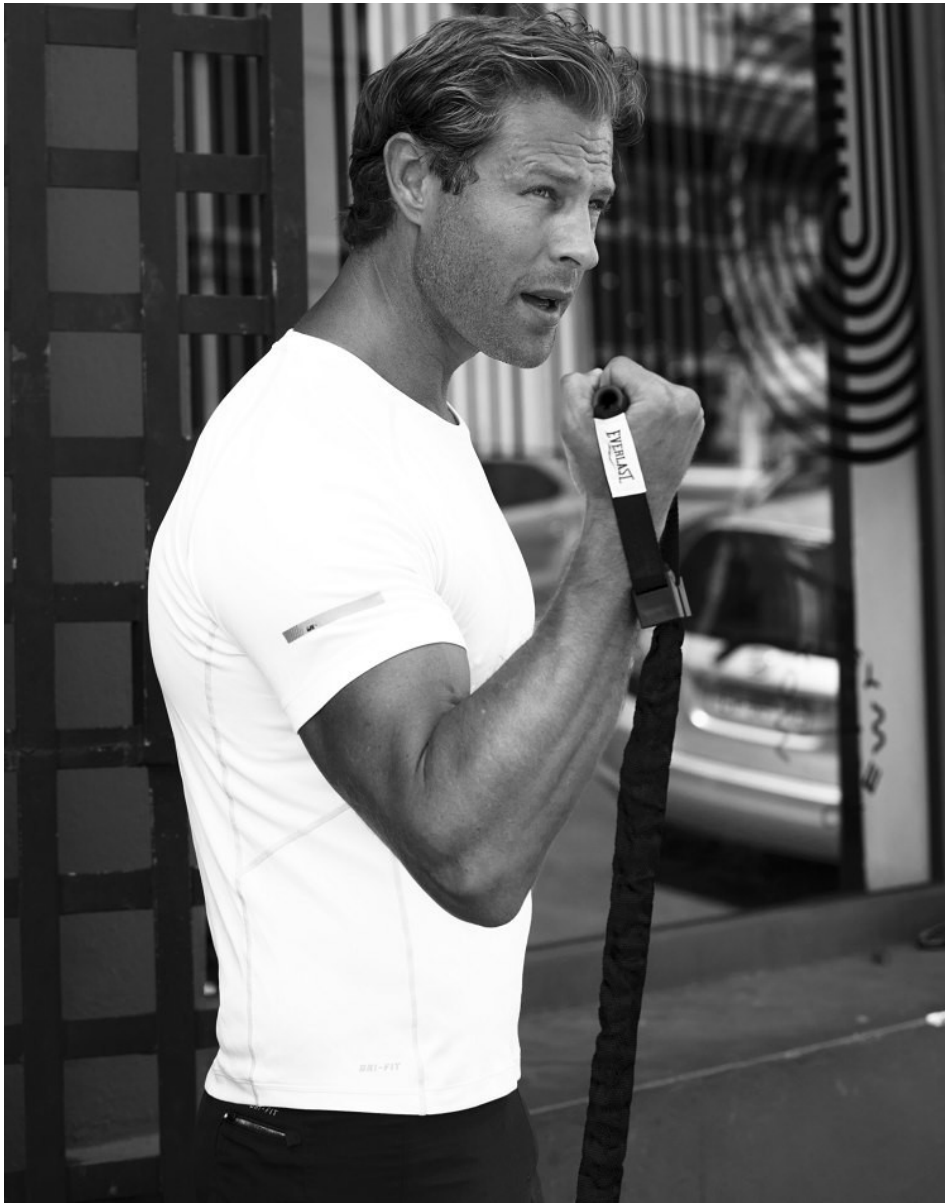
STYLIST: JASON ALEXANDER-BASSON. FASHION ASSISTANTS: SASHA MAHLALELA, HOPELO CHABABA. FASHION INTERN: SEAGU MOGASHOA. MODEL: STUART BELLAMY AT BOSS MODELS

## STUART BELLAMY

Height: 193cm Chest: 106cm Waist: 86cm Suit: 42 L Shoe: 11 UK Hair: Blonde Eyes: Blue

# BOSS MODELS

CAPE TOWN



STUART BELLAMY

Height: 193cm Chest: 106cm Waist: 86cm Suit: 42 L Shoe: 11 UK Hair: Blonde Eyes: Blue