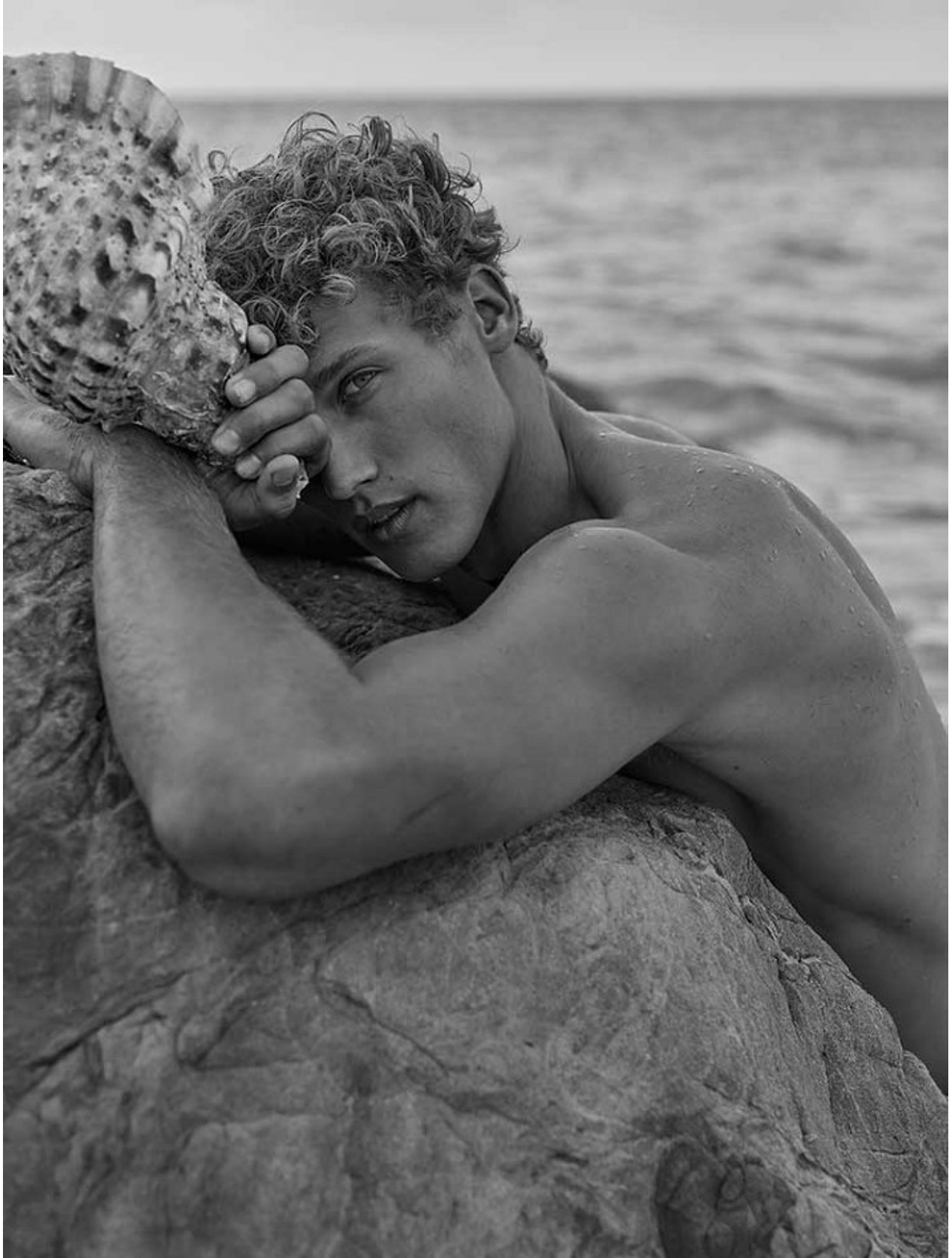


# BOSS MODELS

CAPE TOWN



**BRAM VALBRACHT**

Height: 190cm Chest: 96cm Waist: 79cm Suit: 38 R Shoe: 10.5 UK Hair: Blonde Eyes: Blue/Grey

# BOSS MODELS

CAPE TOWN



**BRAM VALBRACHT**

Height: 190cm Chest: 96cm Waist: 79cm Suit: 38 R Shoe: 10.5 UK Hair: Blonde Eyes: Blue/Grey

# BOSS MODELS

CAPE TOWN



**BRAM VALBRACHT**

Height: 190cm Chest: 96cm Waist: 79cm Suit: 38 R Shoe: 10.5 UK Hair: Blonde Eyes: Blue/Grey

# BOSS MODELS

CAPE TOWN



**BRAM VALBRACHT**

Height: 190cm Chest: 96cm Waist: 79cm Suit: 38 R Shoe: 10.5 UK Hair: Blonde Eyes: Blue/Grey

# BOSS MODELS

CAPE TOWN



BRAM VALBRACHT

Height: 190cm Chest: 96cm Waist: 79cm Suit: 38 R Shoe: 10.5 UK Hair: Blonde Eyes: Blue/Grey

# BOSS MODELS

CAPE TOWN

VALENTINO jacket, shirt,  
pants, and hat.



BRAM VALBRACHT

Height: 190cm Chest: 96cm Waist: 79cm Suit: 38 R Shoe: 10.5 UK Hair: Blonde Eyes: Blue/Grey

# BOSS MODELS

CAPE TOWN



## SALVATORE FERRAGAMO

Guillaume Melland combina los estampados y los luminosos tonos azules de la Riviera francesa para crear un estilo relajado y fresco. Jersey estampado, pantalón de cuadros y mocasines de piel, de Salvatore Ferragamo.

## BRAM VALBRACHT

Height: 190cm Chest: 96cm Waist: 79cm Suit: 38 R Shoe: 10.5 UK Hair: Blonde Eyes: Blue/Grey

# BOSS MODELS

CAPE TOWN



**BRAM VALBRACHT**

Height: 190cm Chest: 96cm Waist: 79cm Suit: 38 R Shoe: 10.5 UK Hair: Blonde Eyes: Blue/Grey



# BOSS MODELS

CAPE TOWN



## BRAM VALBRACHT

Height: 190cm Chest: 96cm Waist: 79cm Suit: 38 R Shoe: 10.5 UK Hair: Blonde Eyes: Blue/Grey

# BOSS MODELS

CAPE TOWN



**BRAM VALBRACHT**

Height: 190cm Chest: 96cm Waist: 79cm Suit: 38 R Shoe: 10.5 UK Hair: Blonde Eyes: Blue/Grey

# BOSS MODELS

CAPE TOWN



**BRAM VALBRACHT**

Height: 190cm Chest: 96cm Waist: 79cm Suit: 38 R Shoe: 10.5 UK Hair: Blonde Eyes: Blue/Grey

# BOSS MODELS

CAPE TOWN



## BRAM VALBRACHT

Height: 190cm Chest: 96cm Waist: 79cm Suit: 38 R Shoe: 10.5 UK Hair: Blonde Eyes: Blue/Grey

# BOSS MODELS

CAPE TOWN



BRAM VALBRACHT

Height: 190cm Chest: 96cm Waist: 79cm Suit: 38 R Shoe: 10.5 UK Hair: Blonde Eyes: Blue/Grey

# BOSS MODELS

CAPE TOWN



## BRAM VALBRACHT

Height: 190cm Chest: 96cm Waist: 79cm Suit: 38 R Shoe: 10.5 UK Hair: Blonde Eyes: Blue/Grey

# BOSS MODELS

CAPE TOWN



**BRAM VALBRACHT**

Height: 190cm Chest: 96cm Waist: 79cm Suit: 38 R Shoe: 10.5 UK Hair: Blonde Eyes: Blue/Grey

# BOSS MODELS

CAPE TOWN



**BRAM VALBRACHT**

Height: 190cm Chest: 96cm Waist: 79cm Suit: 38 R Shoe: 10.5 UK Hair: Blonde Eyes: Blue/Grey



# BOSS MODELS

CAPE TOWN

Cappotto pied-de-poule, **GANT**.  
Trench di pvc, **LES HOMMES**.  
Cappello, **PRADA**.  
Pagina accanto:  
giaccone antivento, **PARAJUMPERS**.  
Giacca con revers a lancia e pantaloni, **OFF-WHITE**.  
Dolcevita, **ROBERTO CAVALLI**.



OTTOBRE 2019

WANTY PAIR

69

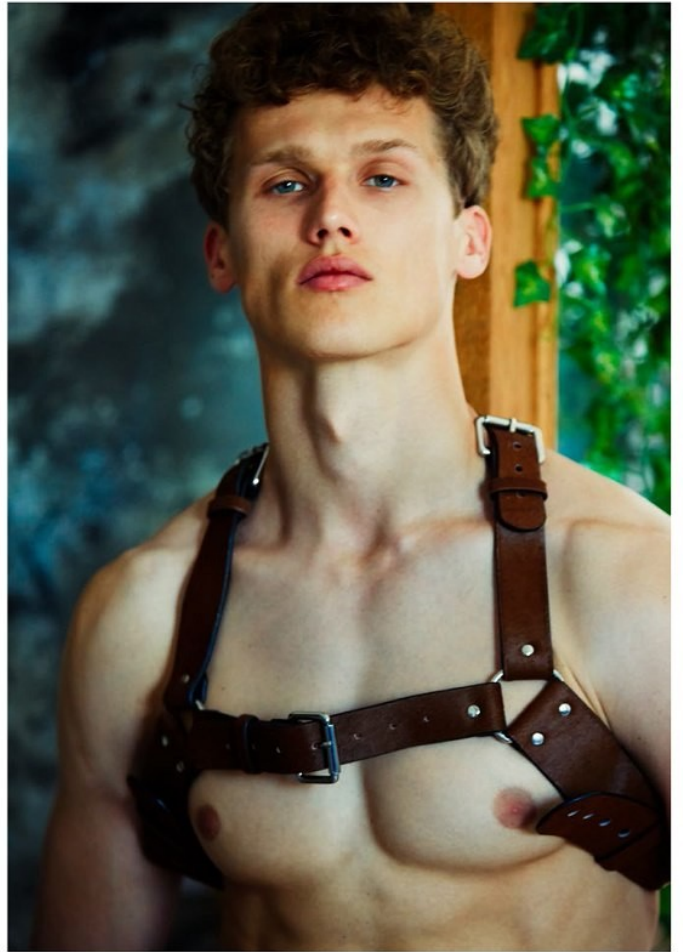
## BRAM VALBRACHT

Height: 190cm Chest: 96cm Waist: 79cm Suit: 38 R Shoe: 10.5 UK Hair: Blonde Eyes: Blue/Grey

# BOSS MODELS

CAPE TOWN

Total look: VERSACE  
Gafas de sol: MONSE



En esta página y en la anterior:  
Aros: PRIVATE POLICY  
Pantalones: BALLY

[www.risbelmagazine.es](http://www.risbelmagazine.es) //299

## BRAM VALBRACHT

Height: 190cm Chest: 96cm Waist: 79cm Suit: 38 R Shoe: 10.5 UK Hair: Blonde Eyes: Blue/Grey

# BOSS MODELS

CAPE TOWN



## BRAM VALBRACHT

Height: 190cm Chest: 96cm Waist: 79cm Suit: 38 R Shoe: 10.5 UK Hair: Blonde Eyes: Blue/Grey

# BOSS MODELS

CAPE TOWN



Piumino e trench  
di pvc, **MONCLER**.  
Completo gessato,  
**MSGM**. Sandali,  
**BIRKENSTOCK**.  
*Pagina accanto:* giacca  
a vento imbottita  
con tasche applicate,  
**CIESSE PIUMINI**.  
Blazer stampato,  
**DRIES VAN NOTEN**.  
Pantaloni,  
**PT TORINO**.  
Orecchino e collana,  
**ALEXANDER**  
**MCOUEN**. Catena,  
**RADÁ**. Sneakers,  
**VIC MATIÉ**.

64

## BRAM VALBRACHT

Height: 190cm Chest: 96cm Waist: 79cm Suit: 38 R Shoe: 10.5 UK Hair: Blonde Eyes: Blue/Grey

# BOSS MODELS

CAPE TOWN



SHOP AT DSQUARED2.COM

**DSQUARED2**

**BRAM VALBRACHT**

Height: 190cm Chest: 96cm Waist: 79cm Suit: 38 R Shoe: 10.5 UK Hair: Blonde Eyes: Blue/Grey

# BOSS MODELS

CAPE TOWN



**BRAM VALBRACHT**

Height: 190cm Chest: 96cm Waist: 79cm Suit: 38 R Shoe: 10.5 UK Hair: Blonde Eyes: Blue/Grey

# BOSS MODELS

CAPE TOWN



## BRAM VALBRACHT

Height: 190cm Chest: 96cm Waist: 79cm Suit: 38 R Shoe: 10.5 UK Hair: Blonde Eyes: Blue/Grey

# BOSS MODELS

CAPE TOWN



BRAM VALBRACHT

Height: 190cm Chest: 96cm Waist: 79cm Suit: 38 R Shoe: 10.5 UK Hair: Blonde Eyes: Blue/Grey



# BOSS MODELS

CAPE TOWN



BRAM VALBRACHT

Height: 190cm Chest: 96cm Waist: 79cm Suit: 38 R Shoe: 10.5 UK Hair: Blonde Eyes: Blue/Grey

# BOSS MODELS

CAPE TOWN



Abrigo: NARCISS  
Pantalones y camisa: LINDER  
Botas: CALVIN LUO



Kimono: KRAMMER & STOUDT  
Pantalones: NUBOUTE

## BRAM VALBRACHT

Height: 190cm Chest: 96cm Waist: 79cm Suit: 38 R Shoe: 10.5 UK Hair: Blonde Eyes: Blue/Grey

# BOSS MODELS

CAPE TOWN



## BRAM VALBRACHT

Height: 190cm Chest: 96cm Waist: 79cm Suit: 38 R Shoe: 10.5 UK Hair: Blonde Eyes: Blue/Grey

# BOSS MODELS

CAPE TOWN



## BRAM VALBRACHT

Height: 190cm Chest: 96cm Waist: 79cm Suit: 38 R Shoe: 10.5 UK Hair: Blonde Eyes: Blue/Grey

# BOSS MODELS

CAPE TOWN



## BRAM VALBRACHT

Height: 190cm Chest: 96cm Waist: 79cm Suit: 38 R Shoe: 10.5 UK Hair: Blonde Eyes: Blue/Grey

# BOSS MODELS

CAPE TOWN



## BRAM VALBRACHT

Height: 190cm Chest: 96cm Waist: 79cm Suit: 38 R Shoe: 10.5 UK Hair: Blonde Eyes: Blue/Grey

# BOSS MODELS

CAPE TOWN



## BRAM VALBRACHT

Height: 190cm Chest: 96cm Waist: 79cm Suit: 38 R Shoe: 10.5 UK Hair: Blonde Eyes: Blue/Grey

# BOSS MODELS

CAPE TOWN

# L'OFFICIEL

LITHUANIA

DE LA COUTURE ET DE LA MODE DE PARIS



## BRAM VALBRACHT

Height: 190cm Chest: 96cm Waist: 79cm Suit: 38 R Shoe: 10.5 UK Hair: Blonde Eyes: Blue/Grey



# BOSS MODELS

CAPE TOWN



**BRAM VALBRACHT**

Height: 190cm Chest: 96cm Waist: 79cm Suit: 38 R Shoe: 10.5 UK Hair: Blonde Eyes: Blue/Grey

# BOSS MODELS

CAPE TOWN



## LOUIS VUITTON

*Kim Jones actualiza prendas y formas clásicas para un viajero contemporáneo que necesita libertad de movimientos y hace suyas prendas clásicas con nuevos patrones. Bomber azul de piel, camisa de rayas con cuello mao y pantalón marino de pinzas, de Louis Vuitton.*

## BRAM VALBRACHT

Height: 190cm Chest: 96cm Waist: 79cm Suit: 38 R Shoe: 10.5 UK Hair: Blonde Eyes: Blue/Grey

# BOSS MODELS

CAPE TOWN



**BRAM VALBRACHT**

Height: 190cm Chest: 96cm Waist: 79cm Suit: 38 R Shoe: 10.5 UK Hair: Blonde Eyes: Blue/Grey