

W MANAGEMENT

A Division Of Boss Models



Daring duo

Printed co-ords will work hard in your wardrobe. Make a statement and wear them on the top and bottom, or mix and match with basics for a more low-key look. This jacket and ankle-grazer combo can be dressed down with box-fresh trainers for weekends, and dressed up with heels for your nine-to-five. Blazer, R8 795; pants, R4 750, both 38 to 46, Paul Smith. T-shirt, R229, 38 to L, Levi's. Earrings, R80, Colette by Colette Hayman. Ring, R149, Aldo.

FARRYN WUEST

Height: 174cm Bust: 86cm Waist: 63cm Hips: 90cm Shoe: 6 UK Hair: Blonde Eyes: Blue/Green

W MANAGEMENT

A Division Of Boss Models



The perfect PRINT

It's official! Prints are big news for S/S 2019. Whether they're pared down or big and bold, there's something for every occasion...

style inspiration



Pretty patchwork

A mixed-print dress will help you master the chaos of clashing patterns without even trying. This showstopper needs minimal styling, so keep your accessories simple.
 Dress, R299, 34 to 42, M&M. Earrings, R160, Colette by Colette Hayman. Black-bead necklace, R175, Poetry. Gold layered necklace, R460, Jangi. Cuff, R160, Naledi at Woolworths. Heels, R199, Mr. Price >>

woman&home IT'S ALL ABOUT YOU! 23

style inspiration



Sporting great

Look effortlessly elegant with a head-to-toe large-scale print. This cool navy matching set is perfect

For city style, and the house fit means extra comfort. Embrace the sports vibe and finish with sneakers.
 Blouse, R699; pants, R699, both 6 to 18, Poetry. Earrings, R220, Colette by Colette Hayman. Rings, from R290 each, both Jangi. Bag, R5 995, Michael Kors with

The w&h fashion team shot on location at Melrose Arch (melrosearch.co.za), Cafe Rio and Rodizio Grill and Tapas (011 483 1910).

STYLING: FARRYN WUEST. PHOTOGRAPHY: GABRIEL DE BRITO. HAIR AND MAKEUP: JENNIFER VAN DER MERWE. MODEL: BOBBI

26 woman&home IT'S ALL ABOUT YOU!

style inspiration



The clash

Sometimes it's good to throw caution to the wind and slummy yourself into a multicoloured number for extra oomph. Striking florals with a contrasting baby-blue background give this dress a spring vibe, while the wrap detail takes it back to a vintage feel. Pair with block colours to avoid looking too busy.
 Dress, R219, 30 to 44, Mr. Price. Necklace, R270; earrings, R160, both Colette by Colette Hayman. Clutch, R3 259, Michael Kors. Heels, R1 599, Poetry >>

woman&home IT'S ALL ABOUT YOU! 25

FARRYN WUEST

Height: 174cm Bust: 86cm Waist: 63cm Hips: 90cm Shoe: 6 UK Hair: Blonde Eyes: Blue/Green

W MANAGEMENT

A Division Of Boss Models



Prints charming

A slogan sweater adds a playful touch and, when teamed with a printed midi skirt, will see you through the seasons. For extra waist definition, half-tuck the jumper into the skirt's waistband and finish off with lace-back kicks for a fashion-forward look. Sweater, R329, XS to XL, H&M. Skirt, R999, 4 to 16, Witchery. Earrings, R120, Colette by Colette Hayman. Necklace, R120 with a pair of earrings, Queenspark. Rings, R199, for set of four, Aldo. Sneakers, R699, Call It Spring >>

style inspiration



White out

Ankle boots will give a floaty frock a modern edge – for a fresh twist for spring, choose a white pair. The pleated skirt and just-above-the-ankle length adds a flattering and feminine finish. Left: Dress, R1 999, one size, Mel. Earrings, R200, Colette by Colette Hayman. Necklace, R430, Savage Jewellery. Bangle, R120, Queenspark. Yellow-gold ring, R199, Jangl. Rose-gold rings, R199 for set of four, Aldo. Boots, R1 999, both Aldo

Shape-shifter

The classic shirt has been given a cool, contemporary update with the injection of bold picture prints. Make it the main event and keep the rest of your look simple, teaming it with sleek tailored trousers and colour-contrasting heels for a look that can take you straight from work to a meal out. This page: Shirt, R5 895, 38 to 48, Paul Smith. Pants, R999, 4 to 16, Forever New. Earrings, R179, Curativ. Rings, from R170 each, all Jangl. Heels, R499, Woolworths >>

woman&home IT'S ALL ABOUT YOU 19



FARRYN WUEST

Height: 174cm Bust: 86cm Waist: 63cm Hips: 90cm Shoe: 6 UK Hair: Blonde Eyes: Blue/Green

W MANAGEMENT

A Division Of Boss Models



FARRYN WUEST

Height: 174cm Bust: 86cm Waist: 63cm Hips: 90cm Shoe: 6 UK Hair: Blonde Eyes: Blue/Green

W MANAGEMENT

A Division Of Boss Models

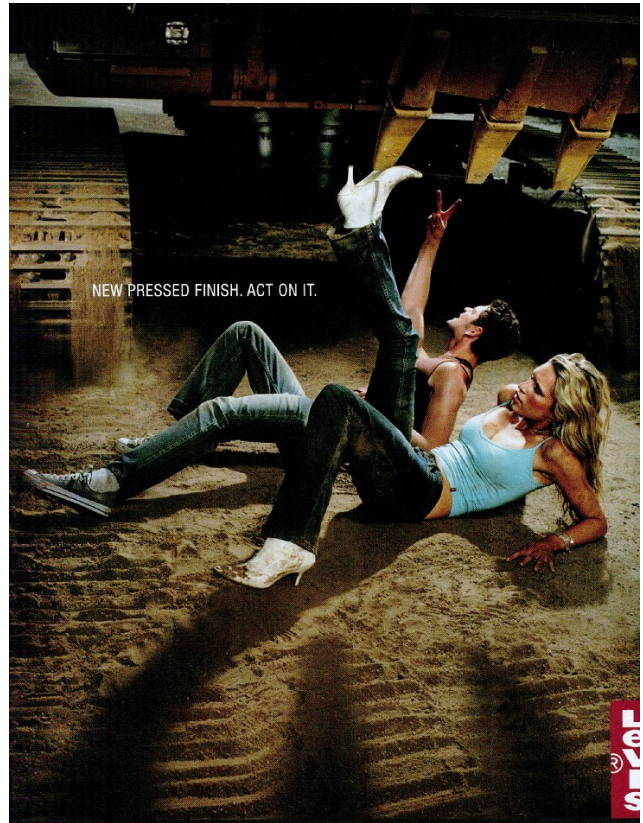


FARRYN WUEST

Height: 174cm Bust: 86cm Waist: 63cm Hips: 90cm Shoe: 6 UK Hair: Blonde Eyes: Blue/Green

W MANAGEMENT

A Division Of Boss Models



FARRYN WUEST

Height: 174cm Bust: 86cm Waist: 63cm Hips: 90cm Shoe: 6 UK Hair: Blonde Eyes: Blue/Green

W MANAGEMENT

A Division Of Boss Models



FARRYN WUEST

Height: 174cm Bust: 86cm Waist: 63cm Hips: 90cm Shoe: 6 UK Hair: Blonde Eyes: Blue/Green

W MANAGEMENT

A Division Of Boss Models



FARRYN WUEST

Height: 174cm Bust: 86cm Waist: 63cm Hips: 90cm Shoe: 6 UK Hair: Blonde Eyes: Blue/Green

W MANAGEMENT

A Division Of Boss Models



FARRYN WUEST

Height: 174cm Bust: 86cm Waist: 63cm Hips: 90cm Shoe: 6 UK Hair: Blonde Eyes: Blue/Green

W MANAGEMENT

A Division Of Boss Models



FARRYN WUEST

Height: 174cm Bust: 86cm Waist: 63cm Hips: 90cm Shoe: 6 UK Hair: Blonde Eyes: Blue/Green

W MANAGEMENT

A Division Of Boss Models



心地よい
リネンの感触を
贅沢に味わう

カウチの心地よさを再現するリネン
のベストが、今季のトレンド。さらさら
とした肌触りで、夏にぴったり。ア
フリカの動物の模様も、ノー
ースのワイルドなデザインも、ス
キムなデザインも、リネンで表現
しよう。インフォメーションサービス
のページ、お問い合わせ先、ア
ドレッシング、サイズ、カラー、
素材、価格、送料、返品、交換
のページ、お問い合わせ先、ア
ドレッシング、サイズ、カラー、
素材、価格、送料、返品、交換



Crudi di volpe
organizzati sul
cavigliani di soffice
cachemire con
chiusura tempo
(Simona Ravazza
by Anabella)
Pantaloncini di pelle
"useof" (Trevor).
Tra il tribale e il
design la collana.



Ha un modo
intrigante il
cattigian melanco
chiuso da allaman
portato a pelle
(Corbep). Poi,
pantaloni in pelle
ecologica con
ricami e dettagli
in fatto sporco.
(Polvero). Collana
indiana con pietre
dure e anelli
(Terzo Millennio).

FARRYN WUEST

Height: 174cm Bust: 86cm Waist: 63cm Hips: 90cm Shoe: 6 UK Hair: Blonde Eyes: Blue/Green

W MANAGEMENT

A Division Of Boss Models



FARRYN WUEST

Height: 174cm Bust: 86cm Waist: 63cm Hips: 90cm Shoe: 6 UK Hair: Blonde Eyes: Blue/Green